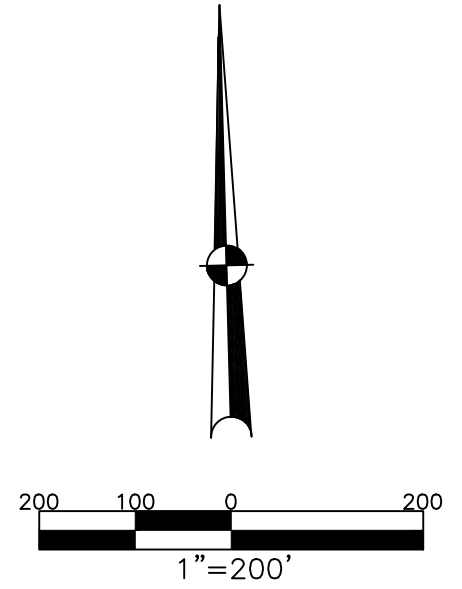


BETHEL TWP.
MIAMI COUNTY, OHIO

SECTION 2 TOWN 2 RANGE 9
PT. NE 1/4

PARCEL NUMBER
A01-
A03-

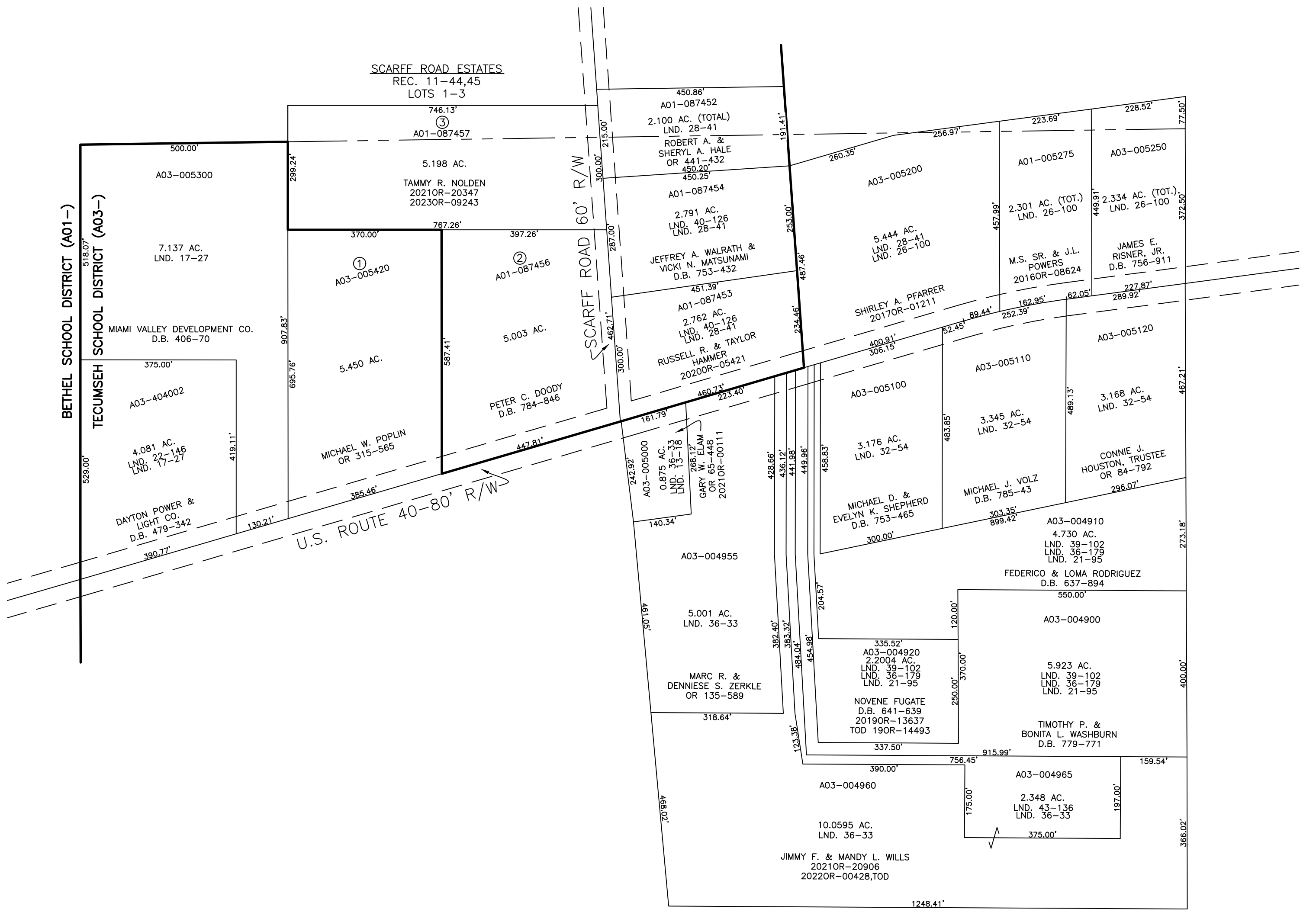
PLAT 4-C



ABBREVIATION LEGEND	
2014OR-07759	= RECORDER'S DOCUMENT NUMBER
OR 257-619	= OFFICIAL RECORD 257 PAGE 619
D.B. 613-172	= DEED BOOK 613, PAGE 172
REC. 15-72	= RECORDER'S PLAT BOOK 15, PAGE 72
LND. 33-15	= LAND SURVEY VOLUME 33, PAGE 15
LOT 19-12	= LOT SURVEY VOLUME 19, PAGE 12
R.R. 8-29	= ROAD RECORD VOLUME 8, PAGE 29
R/W	= RIGHT OF WAY
C	= CENTERLINE
AC.	= ACRES
TWP.	= TOWNSHIP
TR.	= TRACT
②	= LOT CREATED BY RECORDER'S PLAT

LINE LEGEND	
	Blow-up Boundary
	Property Line
	Lot Split Line
	Section Line
	Centerline
	Right-of-Way Line
	Corporation Line

SURVEY INDEX	
LND. 13-18	REC. 11-44
LND. 17-27	REC. 11-45
LND. 21-39	
LND. 22-146	
LND. 23-130	
LND. 26-100	
LND. 28-41	
LND. 32-54	
LND. 36-33	
LND. 36-179	
LND. 38-102	
LND. 40-126	
LND. 43-136	



PREPARED BY: MIAMI COUNTY ENGINEER'S MAP DEPARTMENT
PAUL P. HUELSKAMP, P.E., P.S., COUNTY ENGINEER
DATE: FEBRUARY 24, 2016 MB

REVISED: August 24, 2023 APALMER