

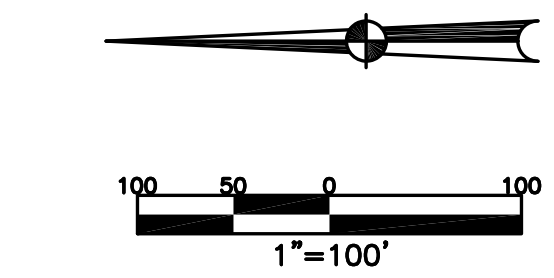
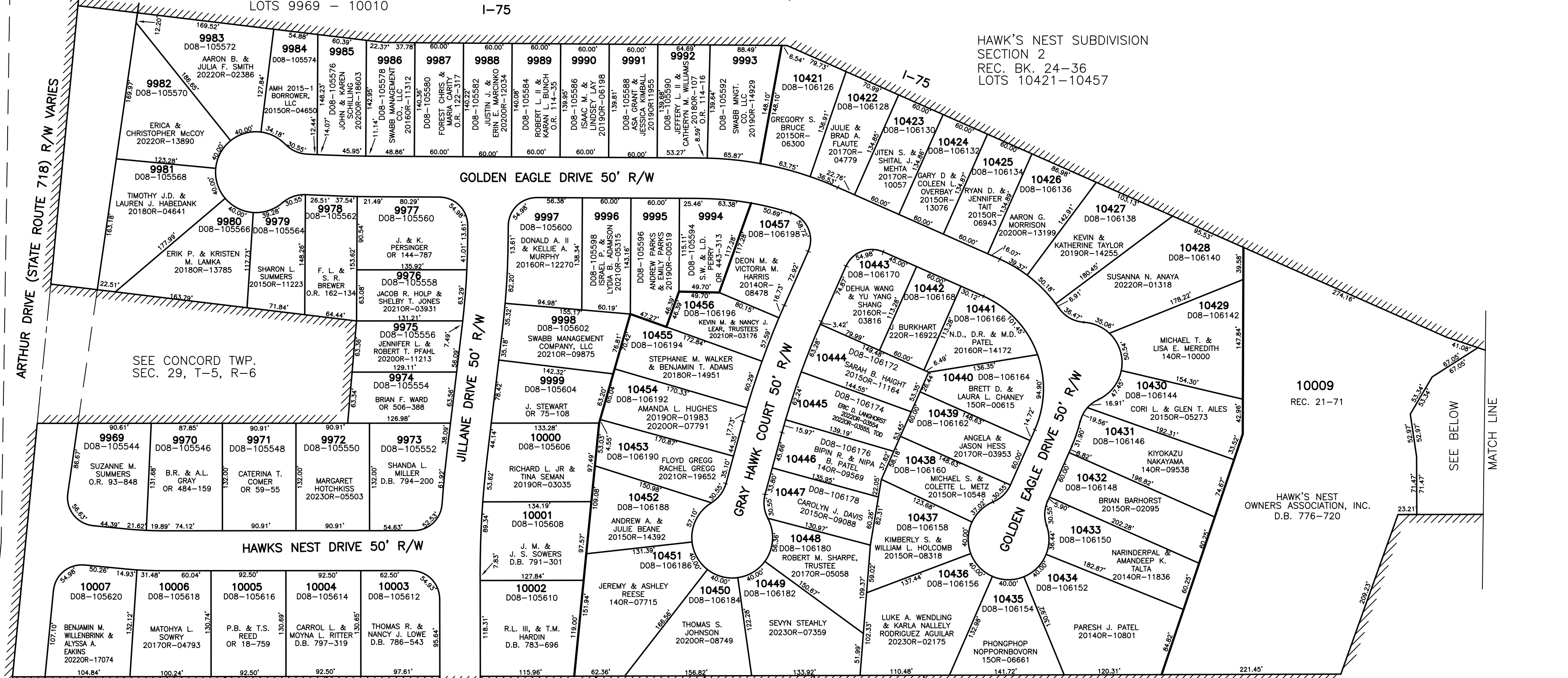
SECTION 29

TOWN 5
RANGE 6

HAWK'S NEST SUBDIVISION
SECTION 1
REC. BK. 21-71
LOTS 9969 - 10010

CITY OF TROY
MIAMI COUNTY, OHIO

PLAT SW 207



ABBREVIATION	LEGEND	LINE LEGEND	SURVEY INDEX
2014OR-07759	= RECORDER'S DOCUMENT NUMBER		HAWK'S NEST SUBDIVISION SECTION 1
OR 66-972	= OFFICIAL RECORD 66 PAGE 972		REC. BK. 21-71
D.B. 613-172	= DEED BOOK 613, PAGE 172		LOTS 9969 - 10010
REC. 15-72	= RECORDER'S PLAT BOOK 15, PAGE 72		HAWK'S NEST SUBDIVISION SECTION 2
LND. 33-15	= LAND SURVEY VOLUME 33, PAGE 15		REC. BK. 24-36
LOT 19-12	= LOT SURVEY VOLUME 19, PAGE 12		LOTS 10421-10457
R.R. 8-29	= ROAD RECORD VOLUME 8, PAGE 29		ANNEX - LOT 9895
R/W	= RIGHT OF WAY		REC. BK. 21-23
C	= CENTERLINE		ANNEX - LOT 7155
AC.	= ACRES		REC. BK. 14-67
TWP.	= TOWNSHIP		
TR.	= TRACT		
IL	= INLOT		

PREPARED BY: MIAMI COUNTY ENGINEER'S MAP DEPARTMENT
PAUL P. HUELSKAMP, P.E., P.S., COUNTY ENGINEER
DATE: JUNE 26, 2007
REVISED: July 12, 2023 DCASSEL

HAWK'S NEST SUBDIVISION
SECTION 2
REC. BK. 24-36
LOTS 10421-10457

10010
REC. 21-71
KENNETH & CARLENE LEE
2018OR-08777

