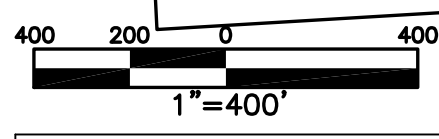
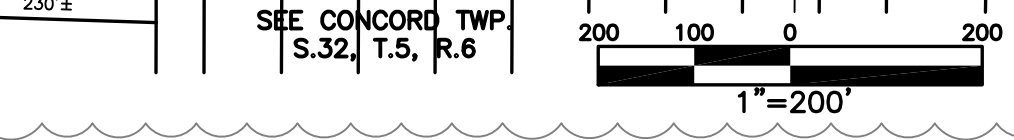
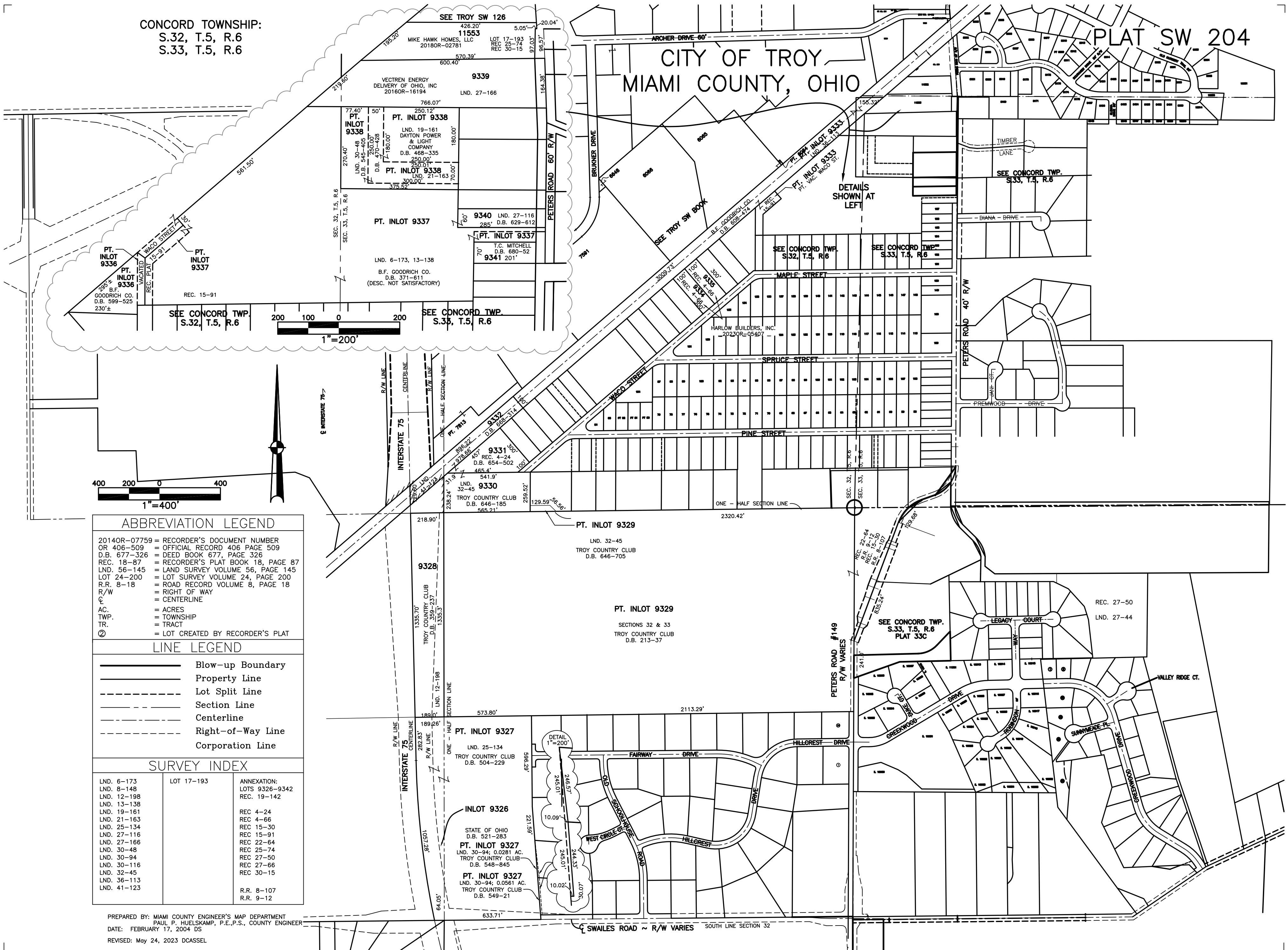


CONCORD TOWNSHIP:
S.32, T.5, R.6
S.33, T.5, R.6

CITY OF TROY
MIAMI COUNTY, OHIO

PLAT SW-204



ABBREVIATION LEGEND		
2014OR-07759	=	RECORDER'S DOCUMENT NUMBER
OR 406-509	=	OFFICIAL RECORD 406 PAGE 509
D.B. 677-326	=	DEED BOOK 677, PAGE 326
REC. 18-87	=	RECORDER'S PLAT BOOK 18, PAGE 87
LND. 56-145	=	LAND SURVEY VOLUME 56, PAGE 145
LOT 24-200	=	LOT SURVEY VOLUME 24, PAGE 200
R.R. 8-18	=	ROAD RECORD VOLUME 8, PAGE 18
R/W	=	RIGHT OF WAY
C	=	CENTERLINE
AC	=	ACRES
TWP.	=	TOWNSHIP
TR.	=	TRACT
②	=	LOT CREATED BY RECORDER'S PLAT
LINE LEGEND		
	=	Blow-up Boundary
	=	Property Line
	=	Lot Split Line
	=	Section Line
	=	Centerline
	=	Right-of-Way Line
	=	Corporation Line
SURVEY INDEX		
LND. 6-173	LOT 17-193	ANNEXATION: LOTS 9326-9342 REC. 19-142
LND. 8-148		
LND. 12-198		
LND. 13-138		
LND. 19-161		
LND. 21-163		
LND. 25-134		
LND. 27-116		
LND. 27-166		
LND. 30-48		
LND. 30-94		
LND. 30-116		
LND. 32-45	R.R. 8-107	R.R. 9-12
LND. 36-113		
LND. 41-123		

PREPARED BY: MIAMI COUNTY ENGINEER'S MAP DEPARTMENT
PAUL P. HUELSKAMP, P.E., P.S., COUNTY ENGINEER
DATE: FEBRUARY 17, 2004 DS
REVISED: May 24, 2023 DCASSEL