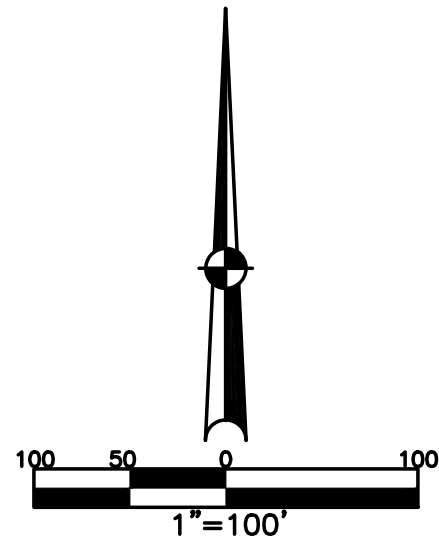


SECTION 31
TOWN 5
RANGE 6

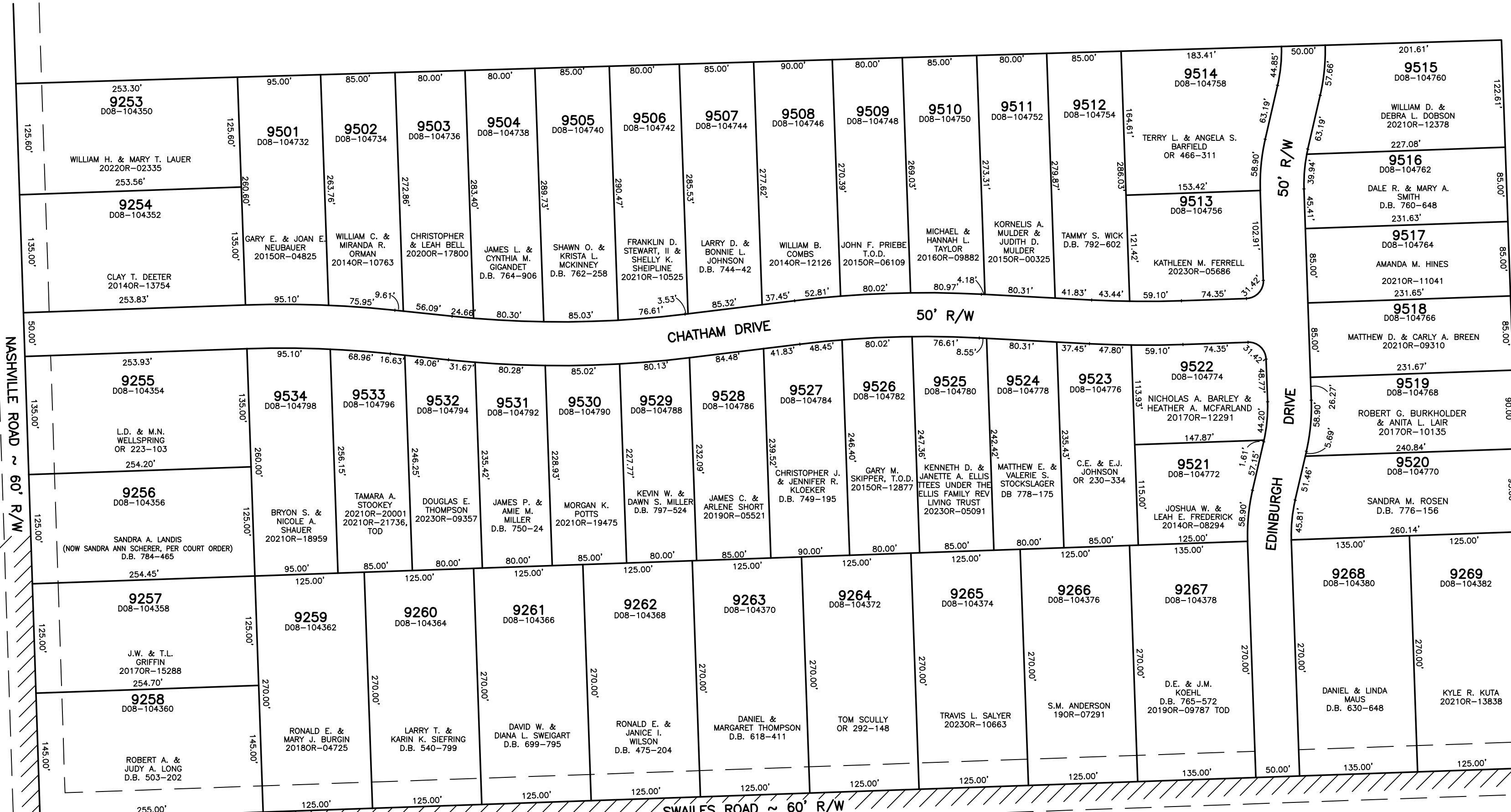
CITY of TROY
MIAMI COUNTY, OHIO

PLAT SW 202



ABBREVIATION LEGEND	LINE LEGEND	SURVEY INDEX
2014OR-07759 = RECORDER'S DOCUMENT NUMBER	Blow-up Boundary	LND. 20-21
O.R. 71-355 = OFFICIAL RECORD 71 PAGE 355	Property Line	REC. 19-127 (ANNEXED)
D.B. 613-172 = DEED BOOK 613, PAGE 172	Lot Split Line	REC. 10-18
REC. 15-72 = RECORDER'S PLAT BOOK 15, PAGE 72	Section Line	REC. 20-48A, 48B, 48C
LND. 33-15 = LAND SURVEY VOLUME 33, PAGE 15	Centerline	
LOT 19-12 = LOT SURVEY VOLUME 19, PAGE 12	Right-of-Way Line	
R.R. 8-29 = ROAD RECORD VOLUME 8, PAGE 29	Corporation Line	
R/W = RIGHT OF WAY		
CL = CENTERLINE		
AC. = ACRES		
TWP. = TOWNSHIP		
TR. = TRACT		
IL = INLOT		

PAMELA ESTATES SECTION TWO
REC. 20-48A, 48B, 48C
LOTS 9501-9534



PAMELA SUBDIVISION REC. 10-18
LOTS 1-17

REC. 19-127 (ANNEXATION)
LOTS 9253-9269

PREPARED BY: MIAMI COUNTY ENGINEER'S MAP DEPARTMENT
PAUL P. HUELSKAMP, P.E., P.S., COUNTY ENGINEER
DATE: JUNE 22, 2003
REVISED: September 28, 2023 APALMER