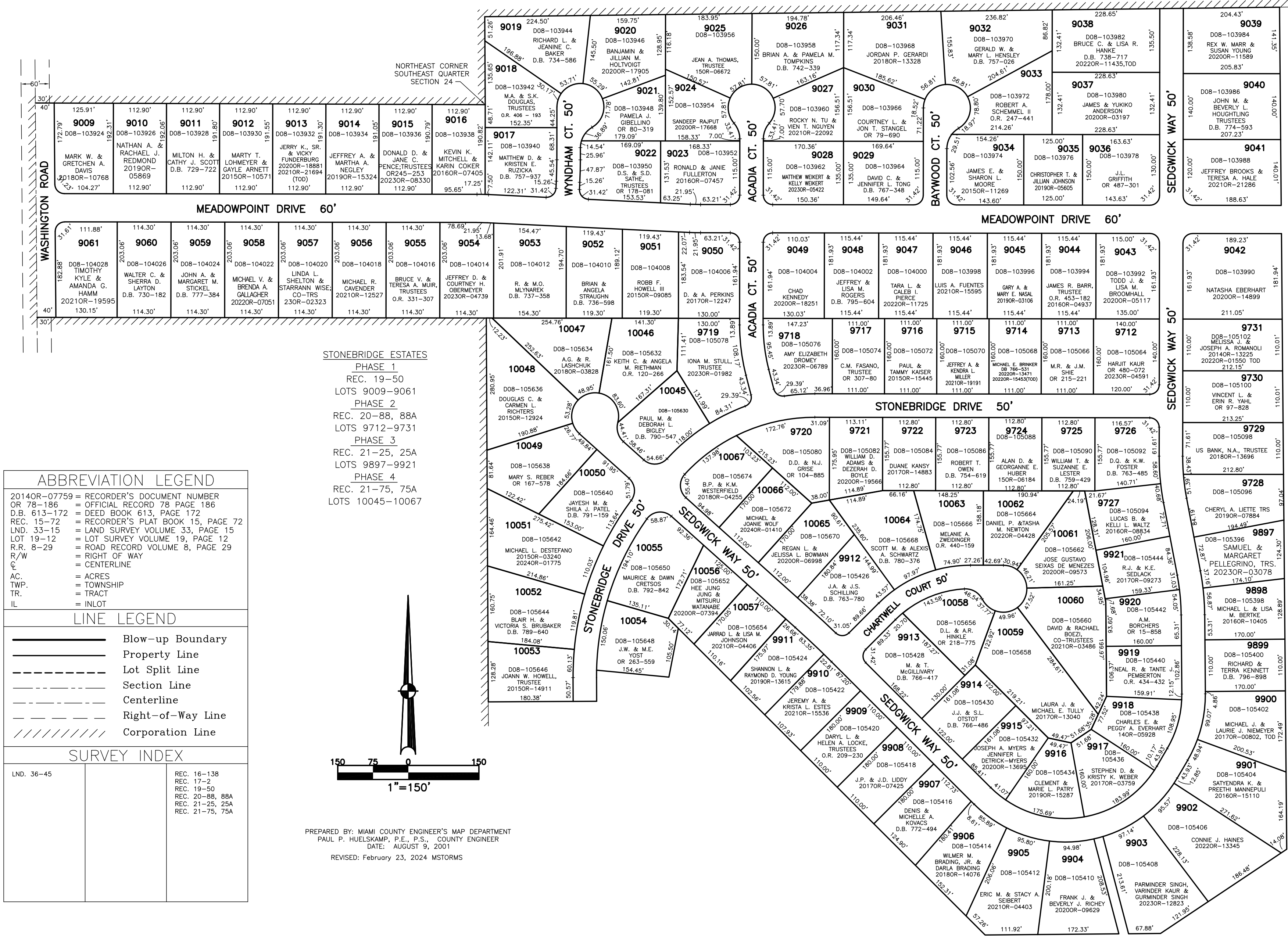


SECTION 24, 19
TOWN 7, 5
RANGE 5, 6

CITY OF TROY MIAMI COUNTY, OHIO

PARCEL NUMBER
D08 -

PLAT SW 197



ABBREVIATION LEGEND	
20140R-07759	= RECORDER'S DOCUMENT NUMBER OR 78-186 = OFFICIAL RECORD 78 PAGE 186
D.B. 613-172	= DEED BOOK 613, PAGE 172
REC. 15-72	= RECORDER'S PLAT BOOK 15, PAGE 72
LND. 33-15	= LAND SURVEY VOLUME 33, PAGE 15
LOT 19-12	= LOT SURVEY VOLUME 19, PAGE 12
R.R. 8-29	= ROAD RECORD VOLUME 8, PAGE 29
R/W	= RIGHT OF WAY
C	= CENTERLINE
AC.	= ACRES
TWP.	= TOWNSHIP
TR.	= TRACT
IL	= INLOT

LINE LEGEND	
	Blow-up Boundary
	Property Line
	Lot Split Line
	Section Line
	Centerline
	Right-of-Way Line
	Corporation Line

SURVEY INDEX	
LND. 36-45	REC. 16-138
	REC. 17-2
	REC. 19-50
	REC. 20-88, 88A
	REC. 21-25, 25A
	REC. 21-75, 75A

STONEBRIDGE ESTATES
 PHASE 1
 REC. 19-50
 LOTS 9009-9061
 PHASE 2
 REC. 20-88, 88A
 LOTS 9712-9731
 PHASE 3
 REC. 21-25, 25A
 LOTS 9897-9921
 PHASE 4
 REC. 21-75, 75A
 LOTS 10045-10067

PREPARED BY: MIAMI COUNTY ENGINEER'S MAP DEPARTMENT
 PAUL P. HUELSKAMP, P.E., P.S., COUNTY ENGINEER
 DATE: AUGUST 9, 2001
 REVISED: February 23, 2024 MSTMORS