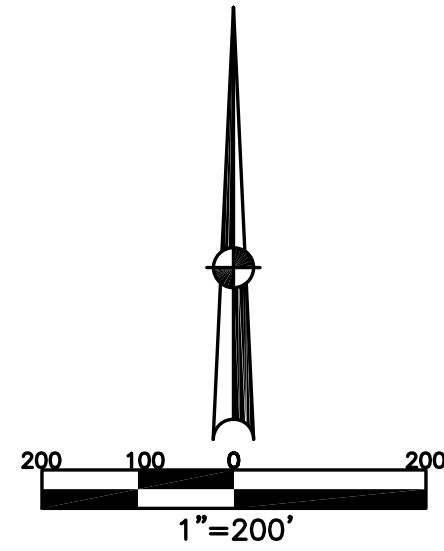


SECTION 33
TOWN 5
RANGE 6

CITY OF TROY
MIAMI COUNTY, OHIO

SMDA NUMBER
D08-SW190_-_____

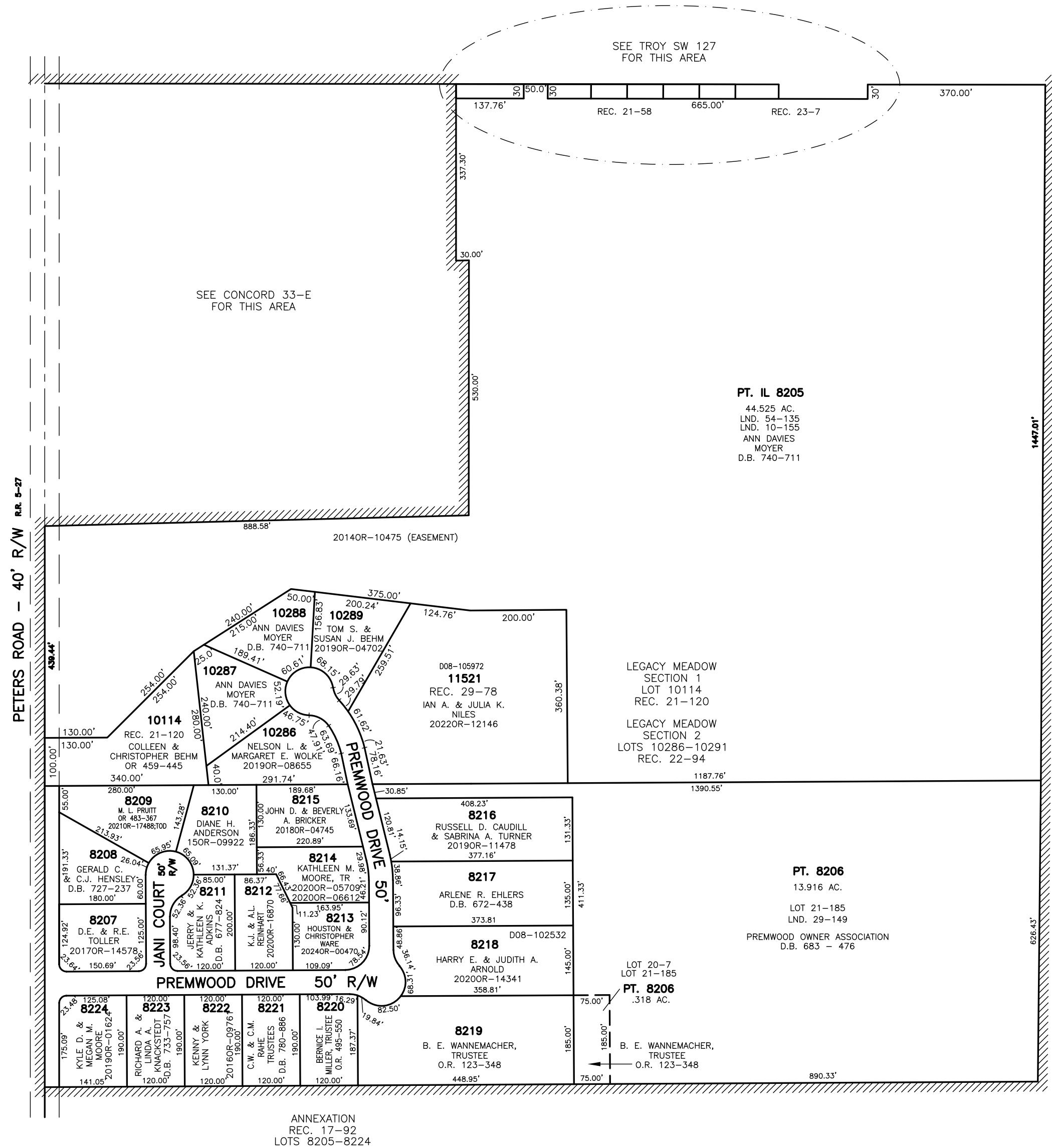
SW 190



ABBREVIATION LEGEND		
2014OR-07759	=	RECORDER'S DOCUMENT NUMBER
OR 222-117	=	OFFICIAL RECORD 222 PAGE 117
D.B. 613-172	=	DEED BOOK 613, PAGE 172
REC. 15-72	=	RECORDER'S PLAT BOOK 15, PAGE 72
LND. 33-15	=	LAND SURVEY VOLUME 33, PAGE 15
LOT 19-12	=	LOT SURVEY VOLUME 19, PAGE 12
R.R. 8-29	=	ROAD RECORD VOLUME 8, PAGE 29
R/W	=	RIGHT OF WAY
CL	=	CENTERLINE
AC.	=	ACRES
TWP.	=	TOWNSHIP
TR.	=	TRACT
IL	=	INLOT

LINE LEGEND		
	=	Blow-up Boundary
	=	Property Line
	=	Lot Split Line
	=	Section Line
	=	Centerline
	=	Right-of-Way Line
	=	Corporation Line

SURVEY INDEX		
REC. 17-77	LND. 29-149	LOT 21-185
REC. 17-92	LND. 54-135	
REC. 21-58		
REC. 21-120		
REC. 22-94		
REC. 23-7		
REC. 29-78		



ANNEXATION
REC. 17-92
LOTS 8205-8224

PREMWOOD SUBDIVISION
SECTION 1
LOTS 1-18 (now known as 8204-8224)
REC. 17-77

PREPARED BY: MIAMI COUNTY ENGINEER'S MAP DEPARTMENT
PAUL P. HUELSKAMP, P.E., P.S., COUNTY ENGINEER
DATE: NOVEMBER 18, 1996

REVISED: January 17, 2024 M5TORMS