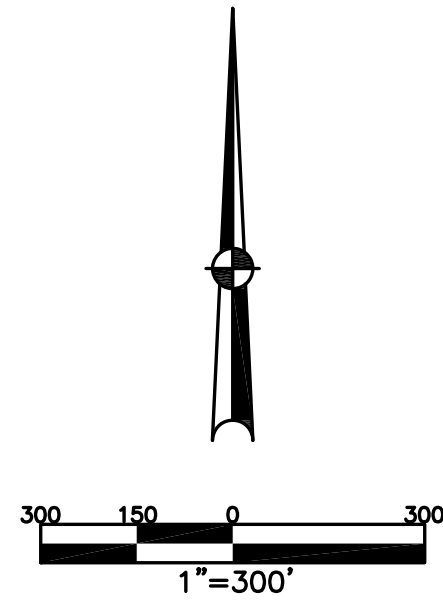


SECTION 18 SECTION 13
 TOWN 5 TOWN 7
 RANGE 6 RANGE 5

CITY OF TROY
 MIAMI COUNTY, OHIO

PARCEL ID NUMBER
 D08-_____

PLAT SW 179



ABBREVIATION LEGEND		
20140R-07759	=	RECORDER'S DOCUMENT NUMBER
OR 406-509	=	OFFICIAL RECORD 406 PAGE 509
D.B. 613-172	=	DEED BOOK 613, PAGE 172
REC. 15-72	=	RECORDER'S PLAT BOOK 15, PAGE 72
LND. 33-15	=	LAND SURVEY VOLUME 33, PAGE 15
LOT 19-12	=	LOT SURVEY VOLUME 19, PAGE 12
R.R. 8-29	=	ROAD RECORD VOLUME 8, PAGE 29
R/W	=	RIGHT OF WAY
C	=	CENTERLINE
AC.	=	ACRES
TWP.	=	TOWNSHIP
TR.	=	TRACT
IL	=	INLOT

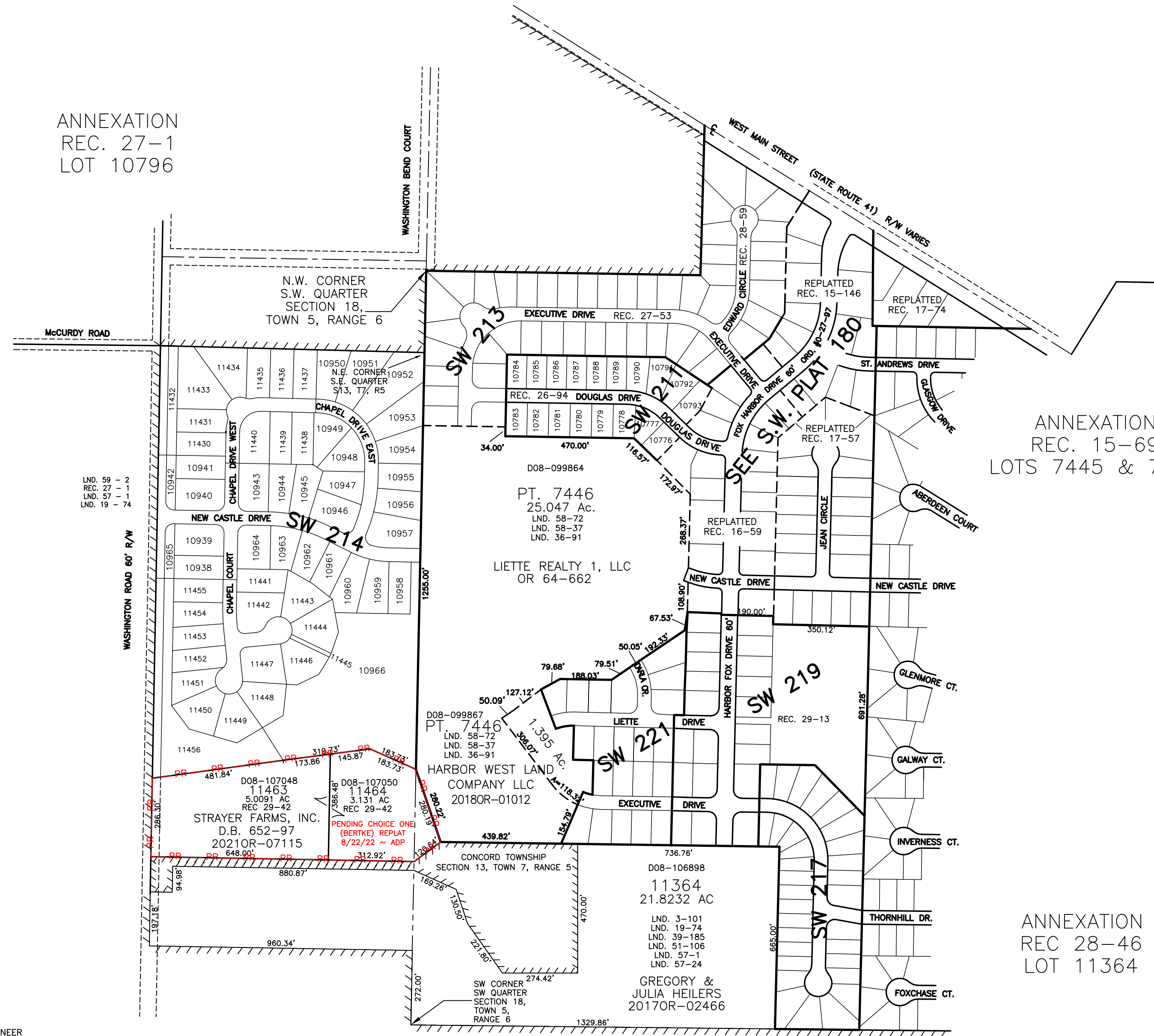
LINE LEGEND	
	Blow-up Boundary
	Property Line
	Lot Split Line
	Section Line
	Centerline
	Right-of-Way Line
	Corporation Line

SURVEY INDEX		
LND. 3-101	REC 15-69	REC. 29-22
LND. 3-363	REC 15-146	REC. 29-42
LND. 19-74	REC 16-59	
LND. 30-105	REC 17-57	
LND. 36-91	REC 17-74	
LND. 39-185	REC 23-21	
LND. 51-106	REC 27-1	
LND. 57-1	REC 27-53	
LND. 57-24	REC 27-97A	
LND. 58-37	REC 28-46	
LND. 58-72	REC 28-59	
LND. 59-2	REC 29-13	

ANNEXATION
 REC. 27-1
 LOT 10796

ANNEXATION
 REC. 15-69
 LOTS 7445 & 7446

ANNEXATION
 REC 28-46
 LOT 11364



PREPARED BY: MIAMI COUNTY ENGINEER'S MAP DEPARTMENT
 PAUL P. HUELSKAMP, P.E., P.S., COUNTY ENGINEER
 DATE: APRIL, 1993

REVISED: December 2, 2022 MSTORMS