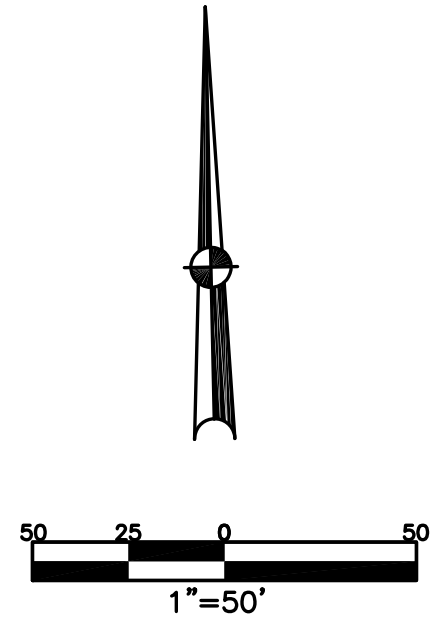


SECTION 19
TOWN 5
RANGE 6

CITY OF TROY
MIAMI COUNTY, OHIO

PARCEL ID NUMBER
D08-_____

PLAT SW 178



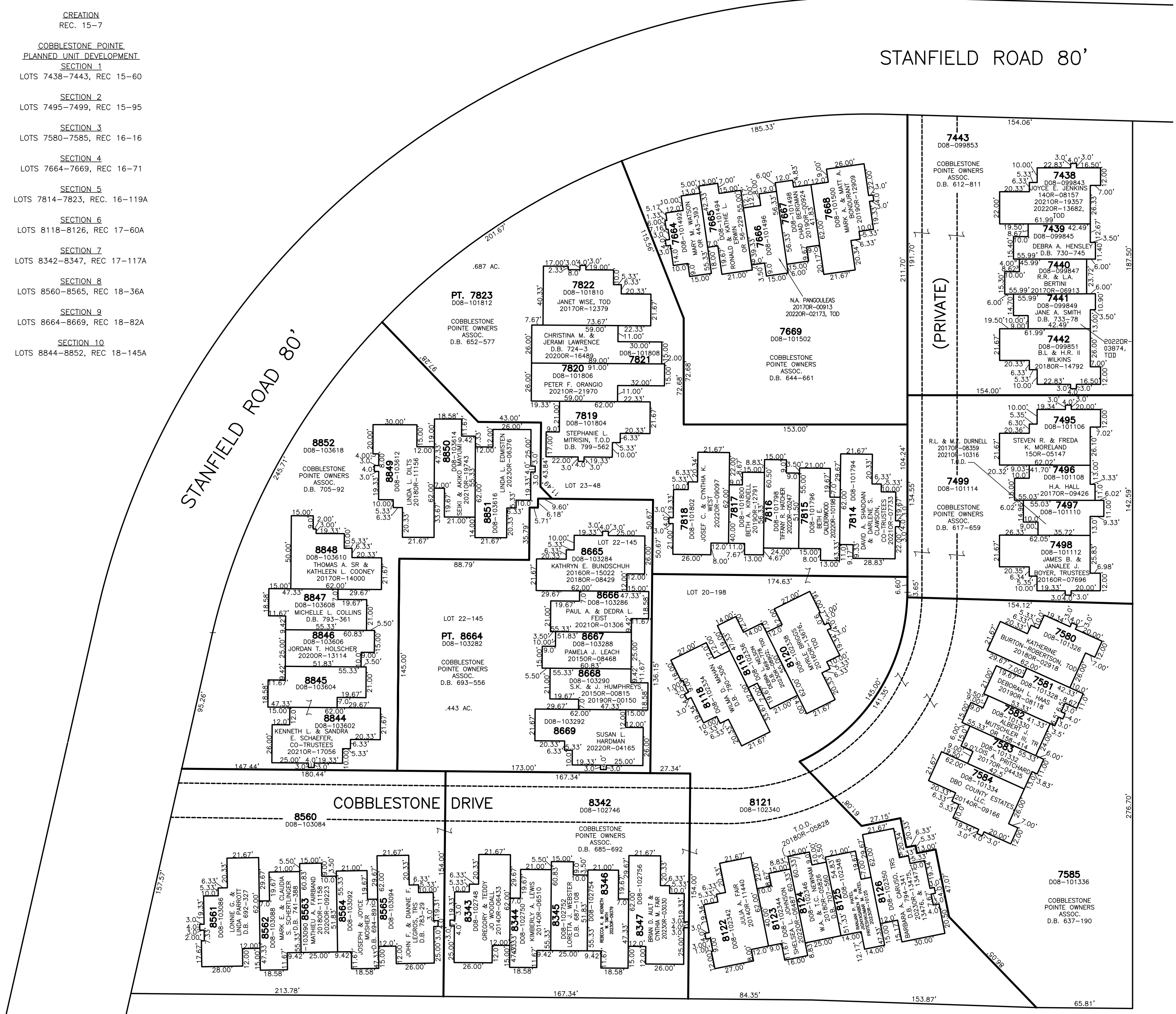
- CREATION
REC. 15-7
- COBBLESTONE POINTE
PLANNED UNIT DEVELOPMENT
SECTION 1
LOTS 7438-7443, REC 15-60
- SECTION 2
LOTS 7495-7499, REC 15-95
- SECTION 3
LOTS 7580-7585, REC 16-16
- SECTION 4
LOTS 7664-7669, REC 16-71
- SECTION 5
LOTS 7814-7823, REC. 16-119A
- SECTION 6
LOTS 8118-8126, REC 17-60A
- SECTION 7
LOTS 8342-8347, REC 17-117A
- SECTION 8
LOTS 8560-8565, REC 18-36A
- SECTION 9
LOTS 8664-8669, REC 18-82A
- SECTION 10
LOTS 8844-8852, REC 18-145A

STANFIELD ROAD 80'

ABBREVIATION LEGEND		
2014OR-07759	=	RECORDER'S DOCUMENT NUMBER
OR 406-509	=	OFFICIAL RECORD 406 PAGE 509
D.B. 613-172	=	DEED BOOK 613, PAGE 172
REC. 15-72	=	RECORDER'S PLAT BOOK 15, PAGE 72
LND. 33-15	=	LAND SURVEY VOLUME 33, PAGE 15
LOT 19-12	=	LOT SURVEY VOLUME 19, PAGE 12
R.R. 8-29	=	ROAD RECORD VOLUME 8, PAGE 29
R/W	=	RIGHT OF WAY
C	=	CENTERLINE
AC.	=	ACRES
TWP.	=	TOWNSHIP
TR.	=	TRACT
IL	=	INLOT

LINE LEGEND		
	=	Blow-up Boundary
	=	Property Line
	=	Lot Split Line
	=	Section Line
	=	Centerline
	=	Right-of-Way Line
	=	Corporation Line

SURVEY INDEX		
REC. 15-7	REC. 18-145A	LOT 18-86
REC. 15-60		LOT 20-198
REC. 15-95		LOT 21-64
REC. 16-16		LOT 22-145
REC. 16-71		LOT 23-48
REC. 16-119A		
REC. 17-60A		
REC. 17-117A		
REC. 18-36A		
REC. 18-82A		



PREPARED BY: MIAMI COUNTY ENGINEER'S MAP DEPARTMENT
PAUL P. HUELSKAMP, P.E., P.S., COUNTY ENGINEER
DATE: APRIL 15, 2014 MB
REVISED: December 8, 2023 MSTORES