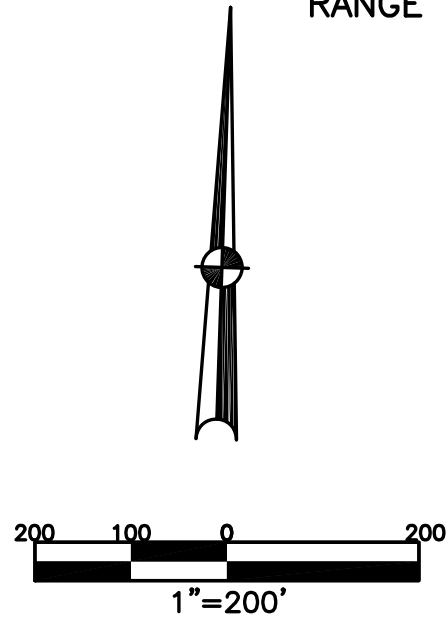


SECTION 31
TOWN 5
RANGE 6

CITY OF TROY
MIAMI COUNTY, OHIO

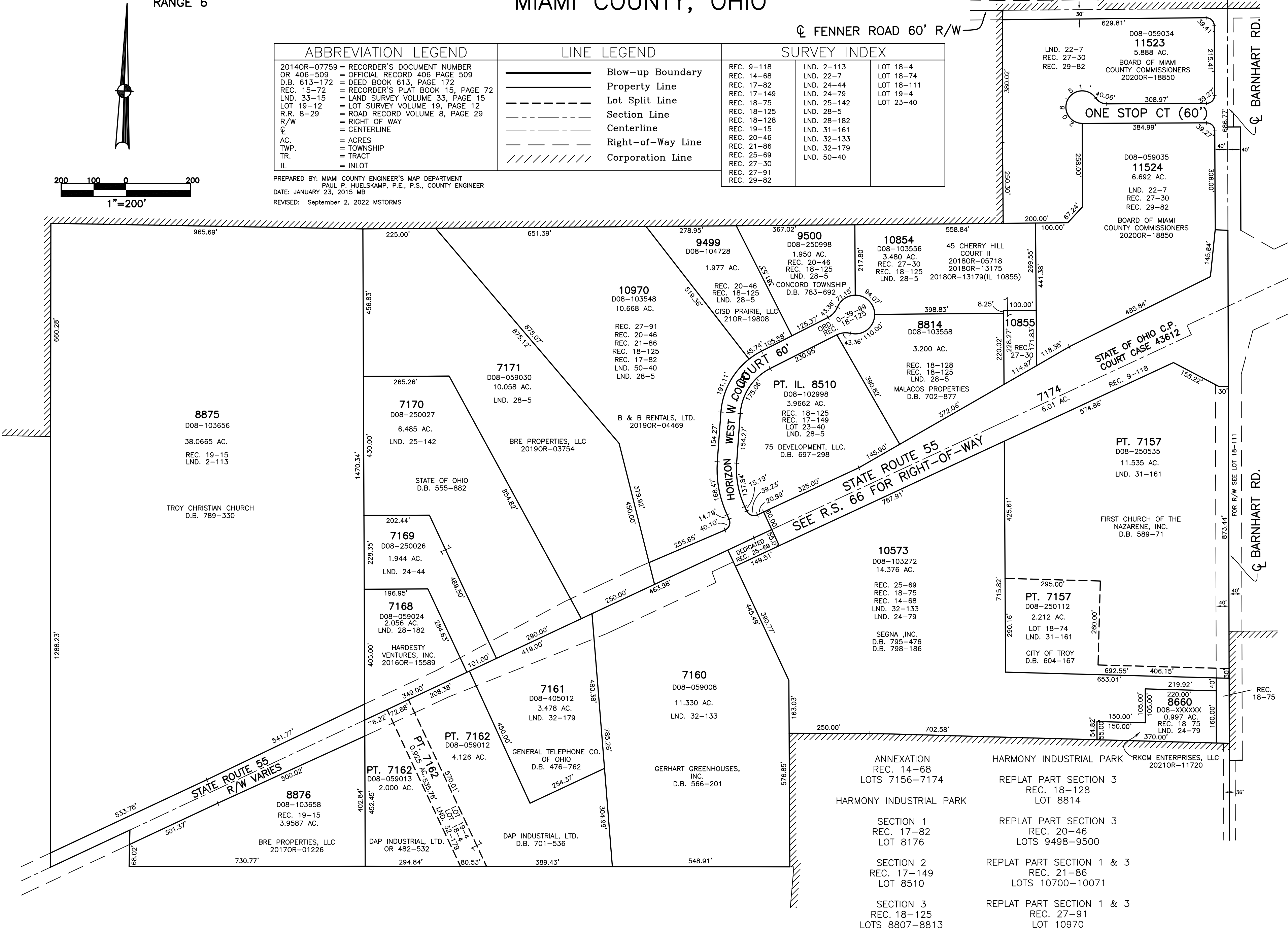
PARCEL ID NUMBER
D08-_____

PLAT SW 171



ABBREVIATION LEGEND	LINE LEGEND	SURVEY INDEX
2014OR-07759 = RECORDER'S DOCUMENT NUMBER OR 406-509 = OFFICIAL RECORD 406 PAGE 509	Blow-up Boundary	REC. 9-118 LND. 2-113 LOT 18-4
D.B. 613-172 = DEED BOOK 613, PAGE 172	Property Line	REC. 14-68 LND. 22-7 LOT 18-74
REC. 15-72 = RECORDER'S PLAT BOOK 15, PAGE 72	Lot Split Line	REC. 17-82 LND. 24-44 LOT 18-111
LND. 33-15 = LAND SURVEY VOLUME 33, PAGE 15	Section Line	REC. 17-149 LND. 24-79 LOT 19-4
LOT 19-12 = LOT SURVEY VOLUME 19, PAGE 12	Centerline	REC. 18-75 LND. 25-142 LOT 23-40
R.R. 8-29 = ROAD RECORD VOLUME 8, PAGE 29	Right-of-Way Line	REC. 18-125 LND. 28-5
R/W = RIGHT OF WAY	Corporation Line	REC. 18-128 LND. 28-182
☉ = CENTERLINE		REC. 19-15 LND. 31-161
AC. = ACRES		REC. 20-46 LND. 32-133
TWP. = TOWNSHIP		REC. 21-86 LND. 32-179
TR. = TRACT		REC. 25-69 LND. 50-40
IL = INLOT		REC. 27-30
		REC. 27-91
		REC. 29-82

PREPARED BY: MIAMI COUNTY ENGINEER'S MAP DEPARTMENT
PAUL P. HUELSKAMP, P.E., P.S., COUNTY ENGINEER
DATE: JANUARY 23, 2015 MB
REVISED: September 2, 2022 MSTORMS



- ☉ FENNER ROAD 60' R/W
- ONE STOP CT (60')
- STATE OF OHIO C.P. COURT CASE 43612
- STATE ROUTE 55
SEE R.S. 66 FOR RIGHT-OF-WAY
- HARMONY INDUSTRIAL PARK
REPLAT PART SECTION 3
REC. 18-128
LOT 8814
- SECTION 1
REC. 17-82
LOT 8176
- SECTION 2
REC. 17-149
LOT 8510
- SECTION 3
REC. 18-125
LOTS 8807-8813
- HARMONY INDUSTRIAL PARK
REPLAT PART SECTION 3
REC. 20-46
LOTS 9498-9500
- REPLAT PART SECTION 1 & 3
REC. 21-86
LOTS 10700-10071
- REPLAT PART SECTION 1 & 3
REC. 27-91
LOT 10970