

MIAMI COUNTY, OHIO

CITY OF TROY

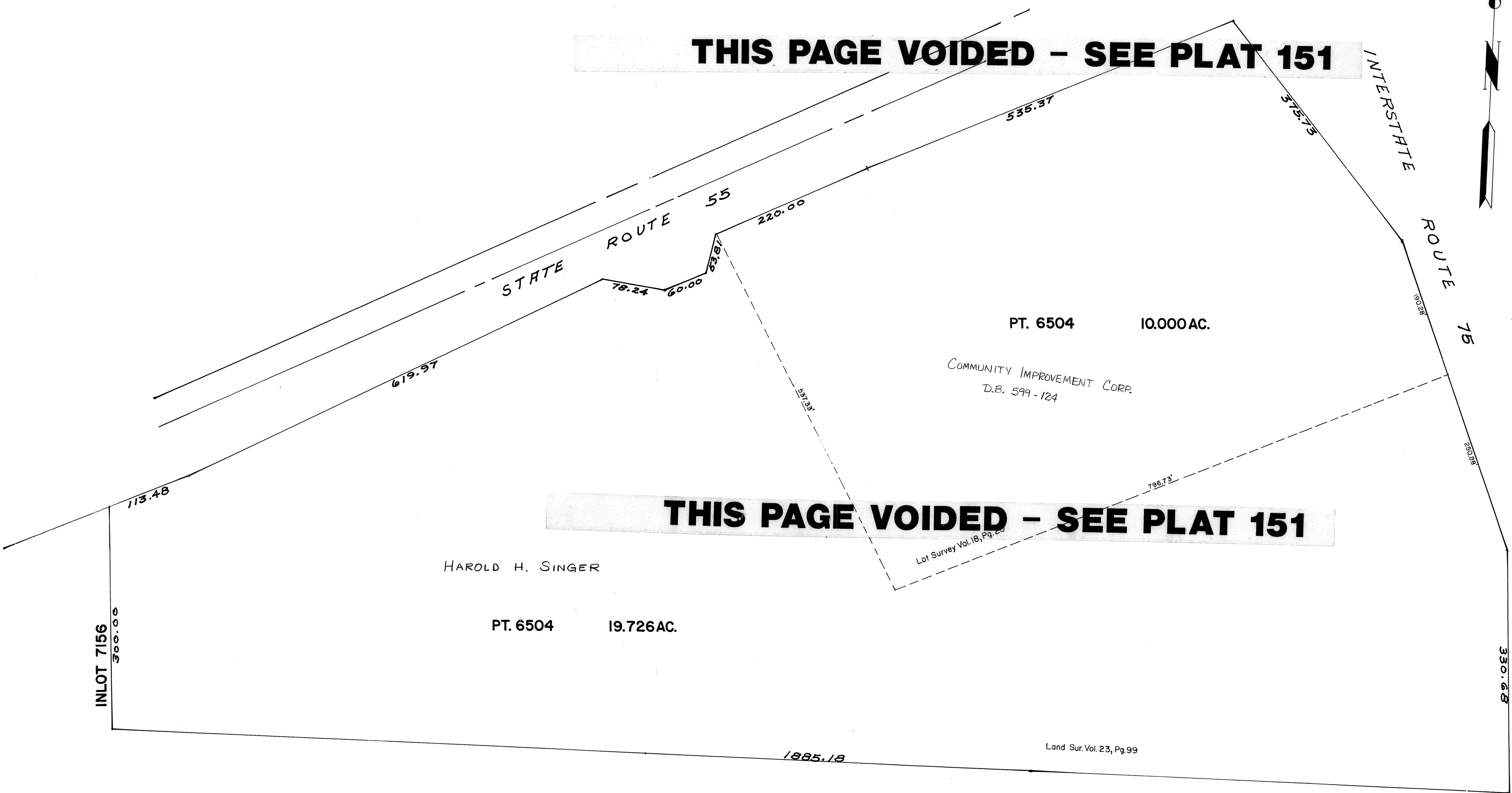
CONCORD TWP. T5-R6-S32 M.R.S.

S.W. PLAT 150

SCALE: 1" = 100'

THIS PAGE VOIDED - SEE PLAT 151

THIS PAGE VOIDED - SEE PLAT 151



PT. 6504 10.000AC.

COMMUNITY IMPROVEMENT CORP.
D.B. 599-124

HAROLD H. SINGER

PT. 6504 19.726AC.

INLOT 7156
300.00

1885.18

Land Sur. Vol. 23, Pg. 99

Lot Survey Vol. 18, Pg. 20

STATE ROUTE 55

INTERSTATE ROUTE 75

ROUTE 75

619.97

113.48

78.24

60.00

53.81

220.00

535.37

375.75

537.33

796.73

150.38

250.88

330.68