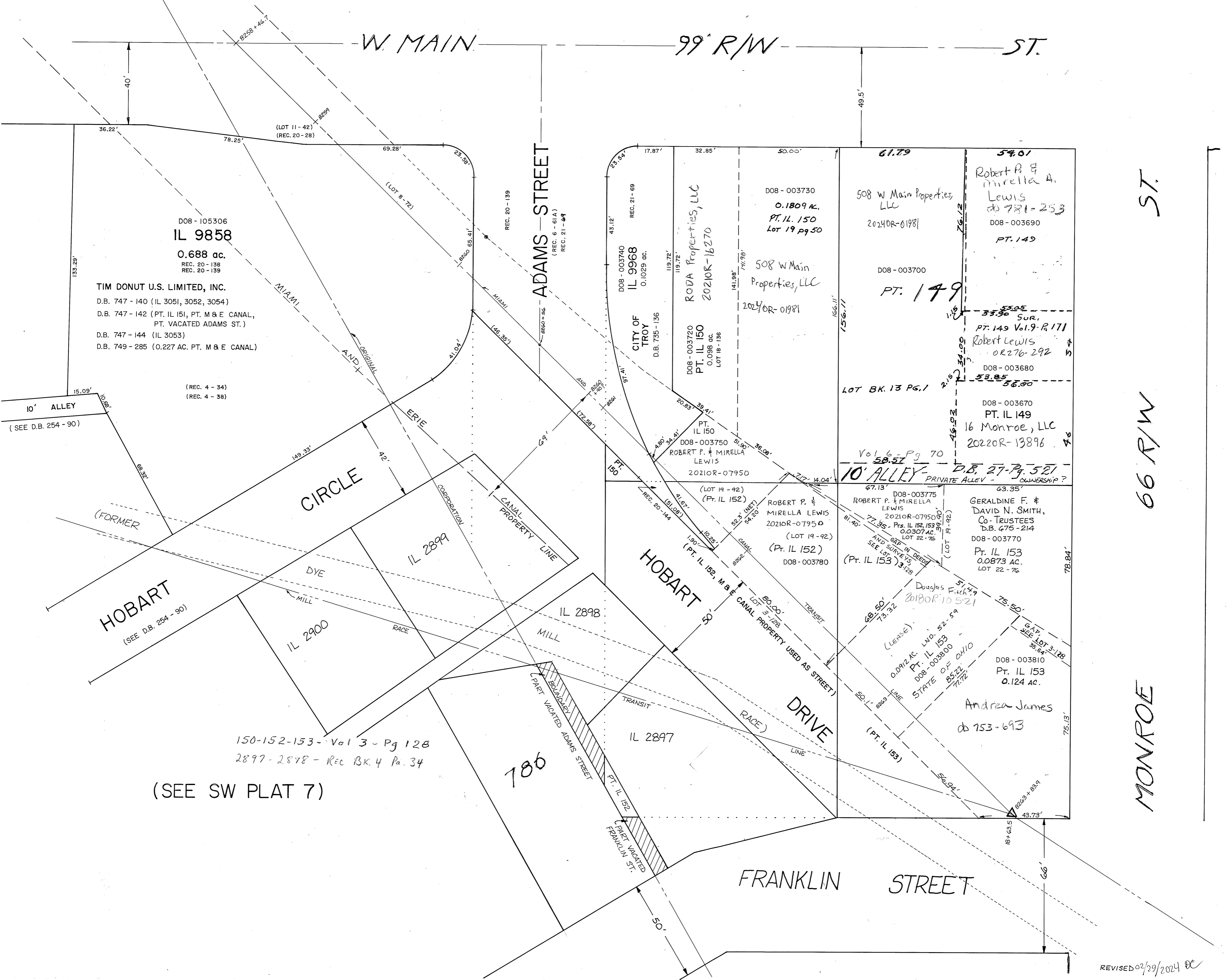


TROY

S.W. SECTION

PLAT NO. 5  
Scale 1" = 30 Feet



D08 - 105306  
**IL 9858**

0.688 ac.  
REC. 20 - 138  
REC. 20 - 139

**TIM DONUT U.S. LIMITED, INC.**  
D.B. 747 - 140 (IL 3051, 3052, 3054)  
D.B. 747 - 142 (PT. IL 151, PT. M & E CANAL,  
PT. VACATED ADAMS ST.)  
D.B. 747 - 144 (IL 3053)  
D.B. 749 - 285 (0.227 AC. PT. M & E CANAL)

(REC. 4 - 34)  
(REC. 4 - 38)

10' ALLEY  
(SEE D.B. 254 - 90)

CIRCLE

ADAMS STREET

HOBART DRIVE

DRIVE

FRANKLIN STREET

ST.

66 R/W

MONROE

(SEE SW PLAT 7)

150-152-153 - Vol 3 - Pg 128  
2897-2898 - REC BK 4 Pa. 34

786