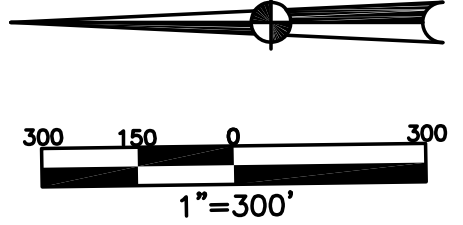


CITY of TROY MIAMI COUNTY, OHIO

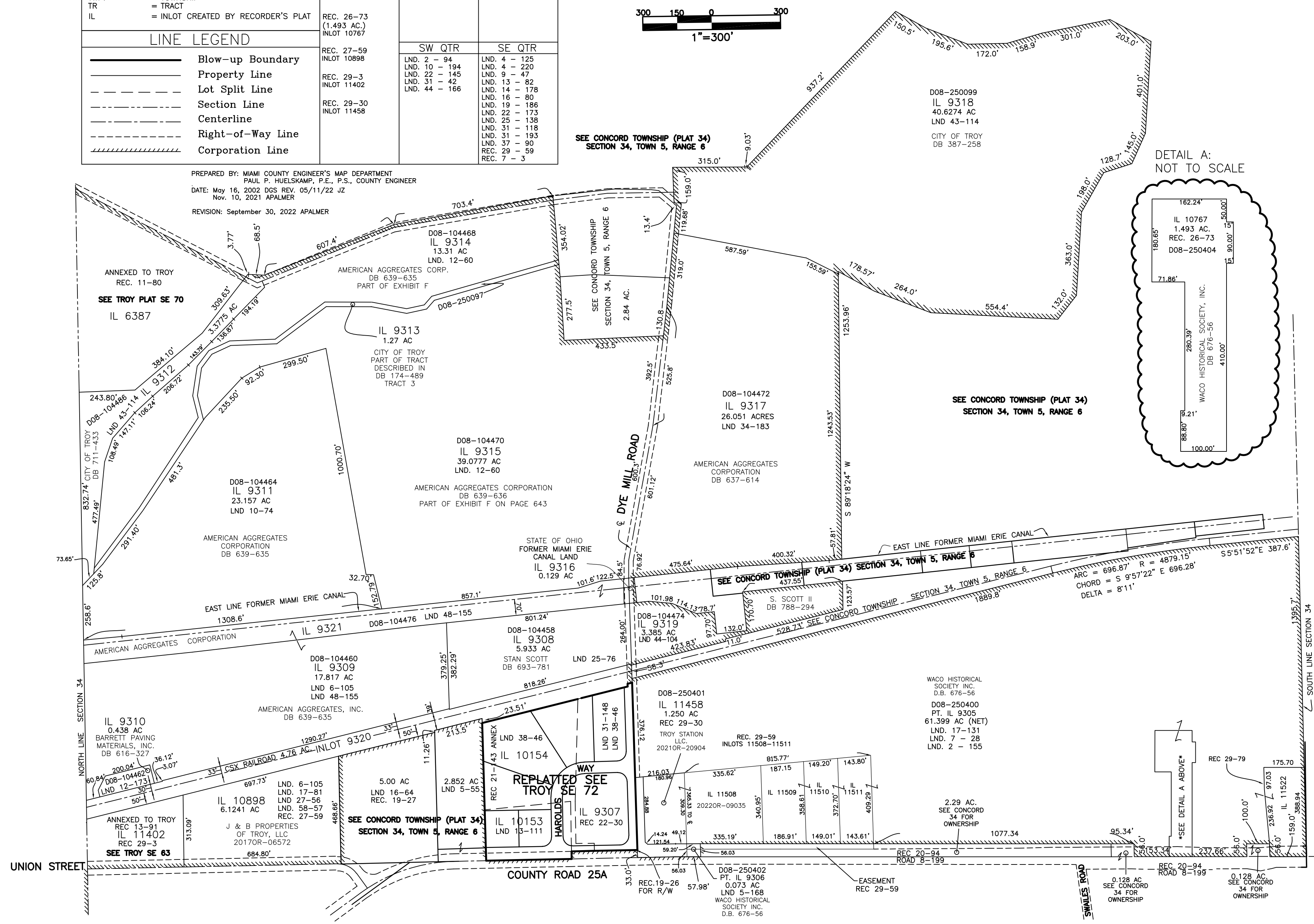
PARCEL NUMBER
D08-_____

SE 71

ABBREVIATION LEGEND		SURVEY INDEX	
DB 613-172	= DEED BOOK 613, PAGE 172	REC. 19-132	NW QTR
REC. 15-72	= RECORDER'S PLAT BOOK 15, PAGE 72	ANNEX	NE QTR
LND. 33-15	= LAND SURVEY VOLUME 33, PAGE 15	LND. 30 - 175	LND. 17 - 19
LOT 19-12	= LOT SURVEY VOLUME 19, PAGE 12	(260.788 AC.)	LND. 24 - 31
R.R. 8-29	= ROAD RECORD VOLUME 8, PAGE 29	INLOTS 9305-9321	LND. 30 - 175
R/W	= RIGHT OF WAY	REC. 21-143	LND. 48 - 98
CL	= CENTERLINE	ANNEX	
AC	= ACRES	(6.0159 AC.)	
TWP.	= TOWNSHIP	INLOTS 10153-10154	
TR	= TRACT	REC. 26-73	
IL	= INLOT CREATED BY RECORDER'S PLAT	(1.493 AC.)	
		INLOT 10767	
LINE LEGEND		SW QTR	
	Blow-up Boundary	LND. 2 - 94	LND. 4 - 125
	Property Line	LND. 10 - 194	LND. 4 - 220
	Lot Split Line	LND. 22 - 145	LND. 9 - 47
	Section Line	LND. 31 - 42	LND. 13 - 82
	Centerline	LND. 44 - 166	LND. 14 - 178
	Right-of-Way Line	LND. 16 - 80	LND. 19 - 186
	Corporation Line	LND. 22 - 173	LND. 25 - 138
		LND. 31 - 118	LND. 31 - 193
		LND. 37 - 90	LND. 37 - 90
		REC. 29 - 59	REC. 29 - 59
		REC. 7 - 3	REC. 7 - 3



PREPARED BY: MIAMI COUNTY ENGINEER'S MAP DEPARTMENT
PAUL P. HUELSKAMP, P.E., P.S., COUNTY ENGINEER
DATE: May 16, 2002 DGS REV. 05/11/22 JZ
Nov. 10, 2021 APALMER
REVISION: September 30, 2022 APALMER



SEE CONCORD TOWNSHIP (PLAT 34)
SECTION 34, TOWN 5, RANGE 6

SEE CONCORD TOWNSHIP (PLAT 34)
SECTION 34, TOWN 5, RANGE 6

DETAIL A:
NOT TO SCALE

SEE CONCORD TOWNSHIP (PLAT 34)
SECTION 34, TOWN 5, RANGE 6

SEE CONCORD TOWNSHIP (PLAT 34) SECTION 34, TOWN 5, RANGE 6

SEE CONCORD TOWNSHIP SECTION 34, TOWN 5, RANGE 6

ANNEXED TO TROY
REC. 11-80
SEE TROY PLAT SE 70
IL 6387

ANNEXED TO TROY
REC. 13-91
IL 11402
REC. 29-3
SEE TROY SE 63

SEE CONCORD TOWNSHIP (PLAT 34)
SECTION 34, TOWN 5, RANGE 6

REPLATED SEE
TROY SE 72

WACO HISTORICAL SOCIETY INC.
D.B. 676-56
D08-250400
PT. IL 9305
61.399 AC (NET)
LND. 17-131
LND. 7 - 28
LND. 2 - 155

SEE DETAIL A ABOVE

2.29 AC.
SEE CONCORD
34 FOR
OWNERSHIP

0.128 AC
SEE CONCORD
34 FOR
OWNERSHIP

0.128 AC
SEE CONCORD
34 FOR
OWNERSHIP

SOUTH LINE SECTION 34