



DETAIL

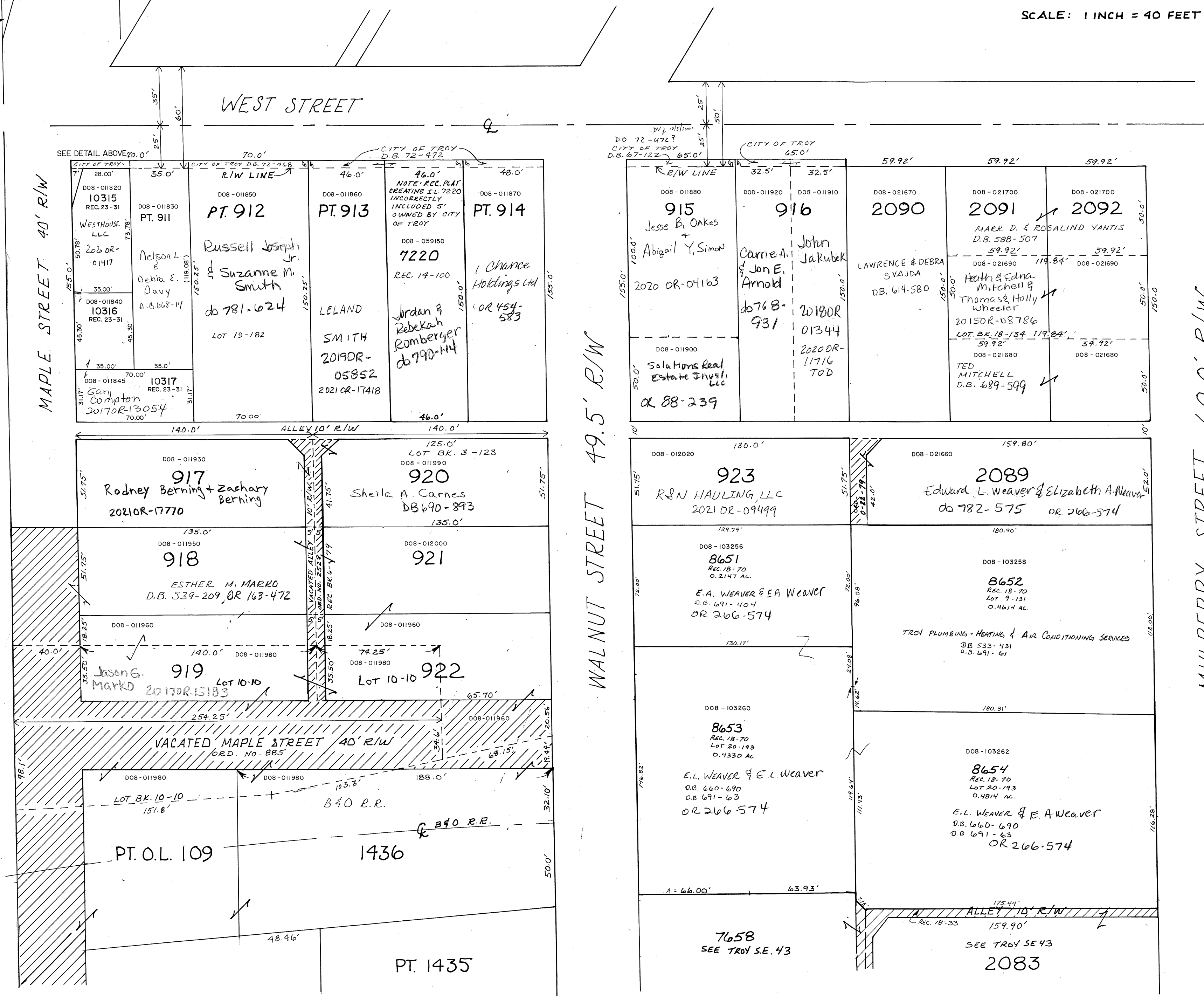
City of Troy
D.B. 72-472
28.00'

LOTS 911 THRU 927 - REC. BK. 1 PG. 444
LOTS 1435 & 1436 - REC. BK. 1 PG. 530
LOTS 2083 THRU 2092 - REC. BK. 2 PG. 188

TROY S.E. SECTION

PLAT NO. 41

SCALE: 1 INCH = 40 FEET



MAPLE STREET 40' R/W

WEST STREET

WALNUT STREET 49.5' R/W

MULBERRY STREET 60.0' R/W

S. MARKET STREET