

TROY

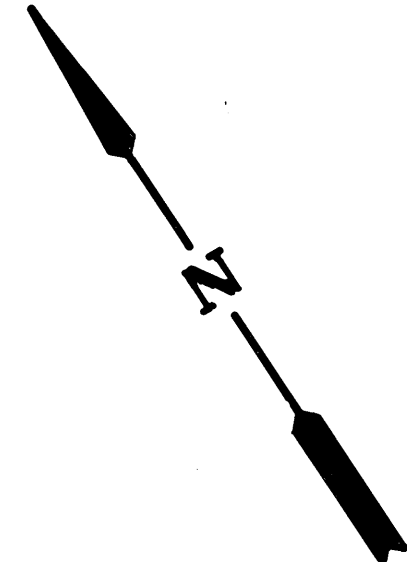
S.E. SECTION

PLAT NO 29

Scale 1 Inch = 40 Feet

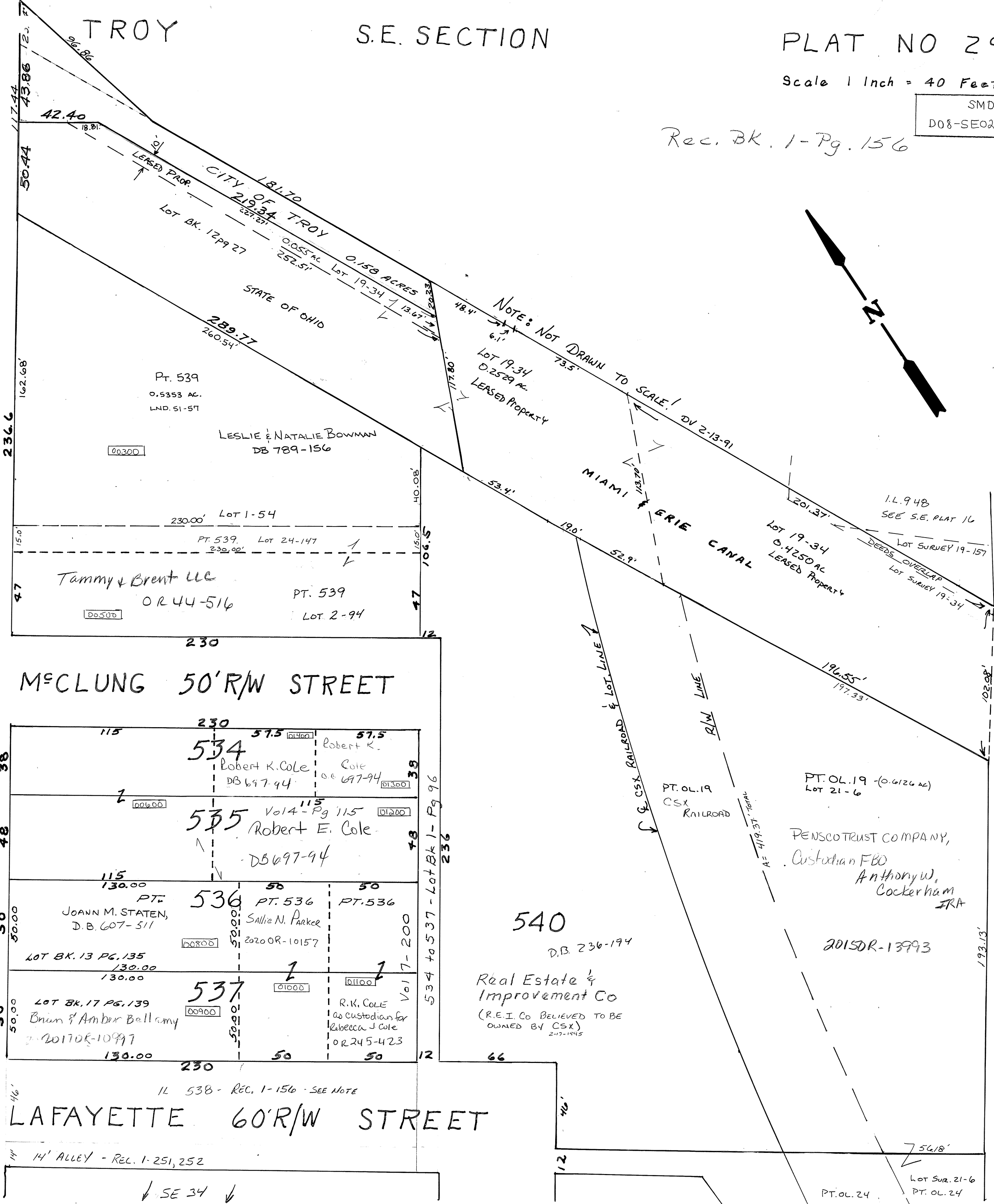
SMDA NUMBER
D08-SE029 -

Rec. BK. 1-Pg. 156



MULBERRY STREET 66' R/W

CRAWFORD STREET 66' R/W



NOTE: IN LOT 538 WAS APPROPRIATED BY THE CITY OF TROY BY ORD. 325 DATED 9-5-1893 FOR "CLAY ST."

REC. 1-156
D. VENTURA
9-17-2014

IL 538 - REC. 1-156 - SEE NOTE

REV.
1-29-2016
D. VENTURA