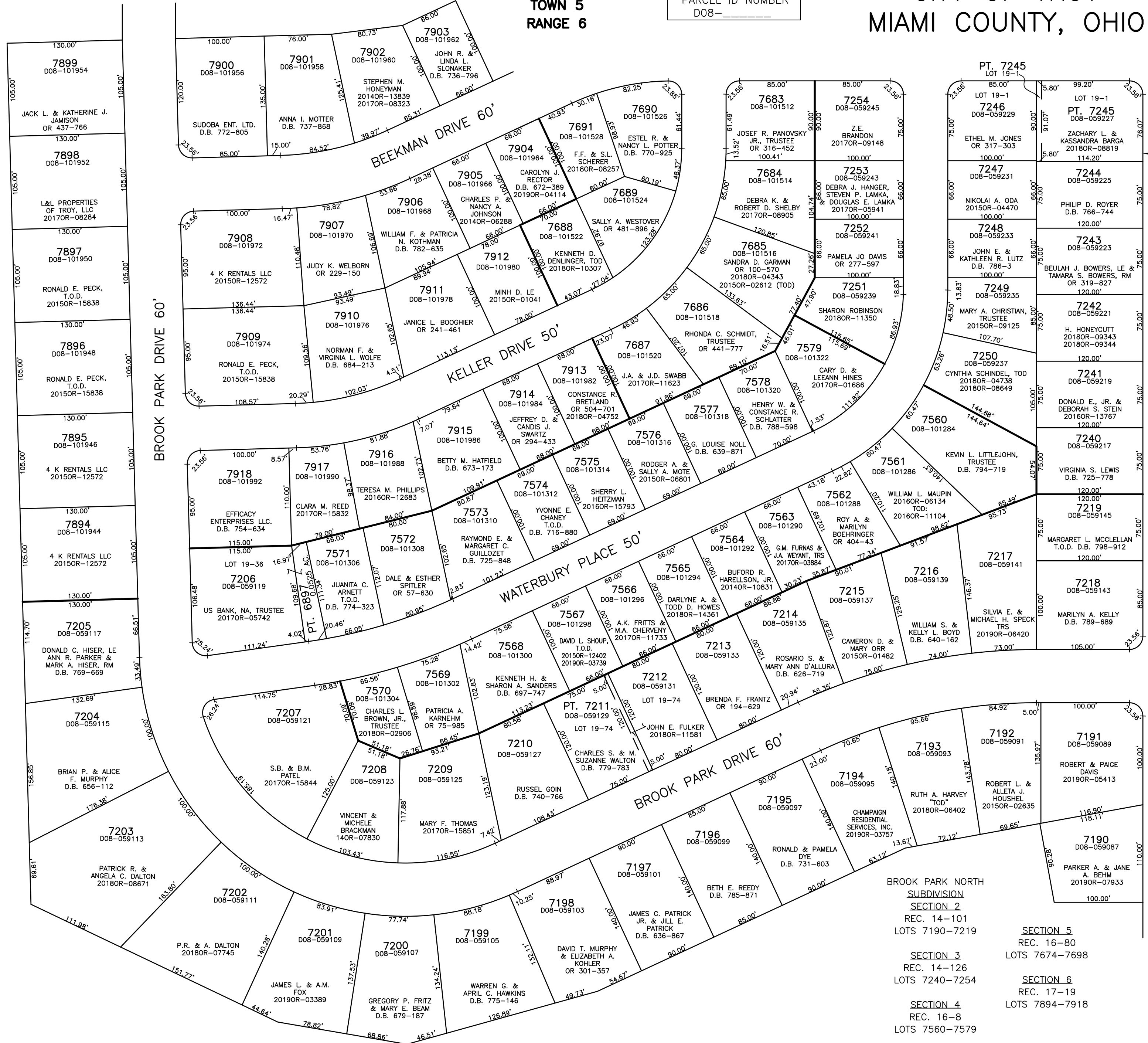


SECTION 17  
TOWN 5  
RANGE 6

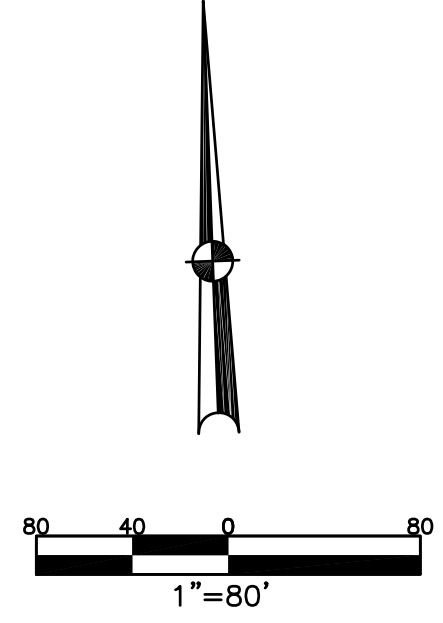
PARCEL ID NUMBER  
D08-\_\_\_\_\_

CITY OF TROY  
MIAMI COUNTY, OHIO

PLAT NW 101



LYTLE ROAD



ABBREVIATION LEGEND	
20140R-07759	= RECORDER'S DOCUMENT NUMBER
OR 406-509	= OFFICIAL RECORD 406 PAGE 509
D.B. 613-172	= DEED BOOK 613, PAGE 172
REC. 15-72	= RECORDER'S PLAT BOOK 15, PAGE 72
LND. 33-15	= LAND SURVEY VOLUME 33, PAGE 15
LOT 19-12	= LOT SURVEY VOLUME 19, PAGE 12
R.R. 8-29	= ROAD RECORD VOLUME 8, PAGE 29
R/W	= RIGHT OF WAY
C.	= CENTERLINE
AC.	= ACRES
TWP.	= TOWNSHIP
TR.	= TRACT
IL	= INLOT

LINE LEGEND	
	Blow-up Boundary
	Property Line
	Lot Split Line
	Section Line
	Centerline
	Right-of-Way Line
	Corporation Line

SURVEY INDEX		
REC. 14-101	LOT 19-1	
REC. 14-126	LOT 19-36	
REC. 16-8	LOT 19-74	
REC. 16-80		
REC. 17-19		

PREPARED BY:  
MIAMI COUNTY ENGINEER'S MAP DEPARTMENT  
PAUL P. HUELSKAMP, P.E., P.S., COUNTY ENGINEER  
DATE: MAY 2, 2014 MB  
REVISED: July 22, 2019 MBROMLEY

BROOK PARK NORTH  
SUBDIVISION  
SECTION 2  
REC. 14-101  
LOTS 7190-7219

SECTION 3  
REC. 14-126  
LOTS 7240-7254

SECTION 4  
REC. 16-8  
LOTS 7560-7579

SECTION 5  
REC. 16-80  
LOTS 7674-7698

SECTION 6  
REC. 17-19  
LOTS 7894-7918