

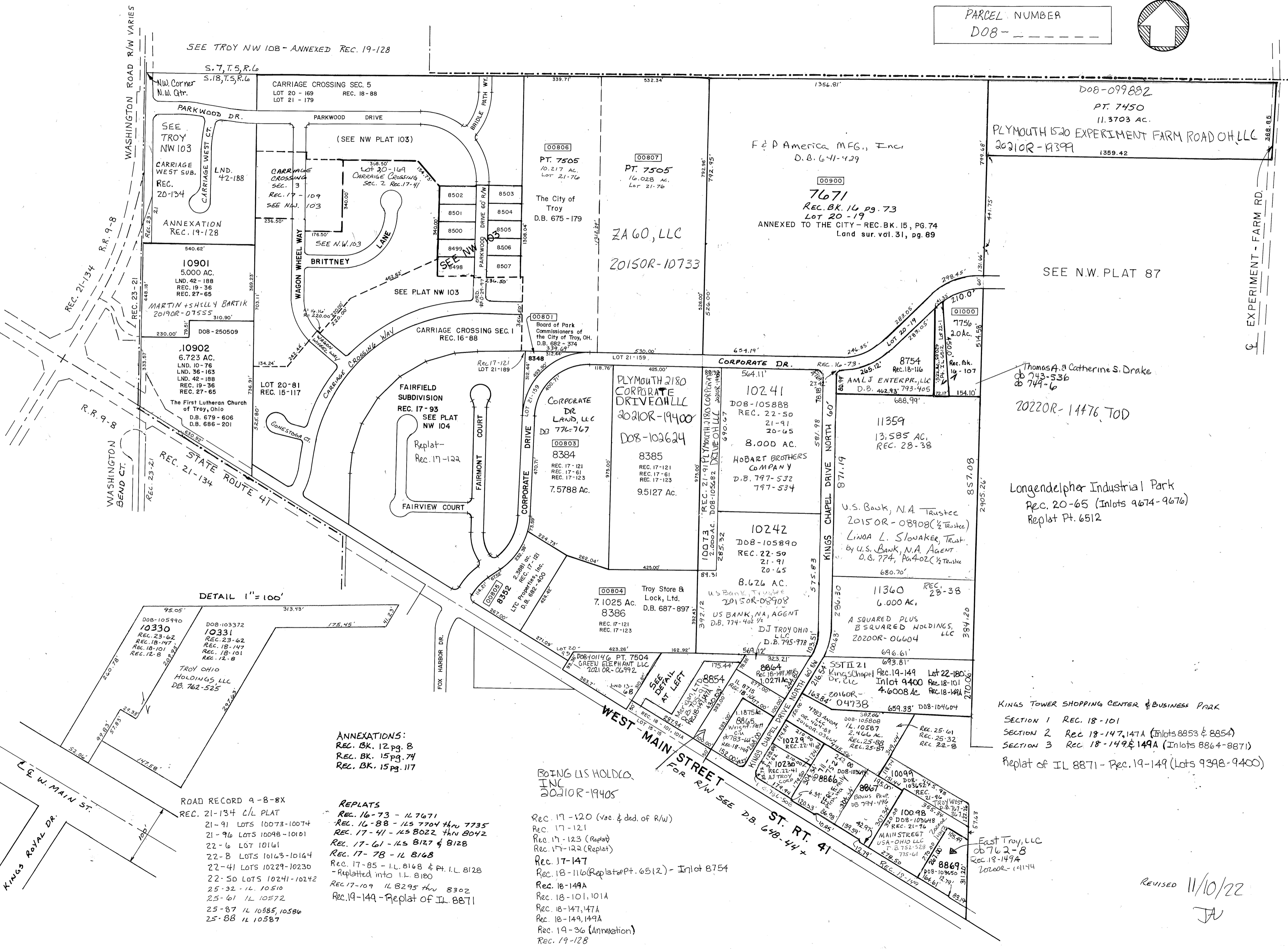
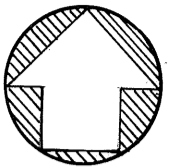
MIAMI COUNTY, OH
CITY OF TROY

N.W. PLAT NO. 93

SCALE: 1" = 300'

PARCEL NUMBER

DOB- - - - -



SEE TROY NW 10B - ANNEXED REC. 19-128

S. 7, T. 5, R. 6

CARRIAGE CROSSING SEC. 5
LOT 20 - 169 REC. 18-88
LOT 21 - 179

SEE TROY NW 103
CARRIAGE WEST SUB.
REC. 20-134

ANNEXATION
REC. 19-128

10901
5.000 AC.
LND. 42-188
REC. 19-36
REC. 27-65

MARTIN + SHILLY BARTIK
2019OR-07555

10902
6.723 AC.
LND. 10-76
LND. 36-163
LND. 42-188
REC. 19-36
REC. 27-65

The First Lutheran Church
of Troy, Ohio
D.B. 679-606
D.B. 686-201

10900
5.000 AC.
LND. 42-188
REC. 19-36
REC. 27-65

10901
5.000 AC.
LND. 42-188
REC. 19-36
REC. 27-65

10902
6.723 AC.
LND. 10-76
LND. 36-163
LND. 42-188
REC. 19-36
REC. 27-65

The First Lutheran Church
of Troy, Ohio
D.B. 679-606
D.B. 686-201

10901
5.000 AC.
LND. 42-188
REC. 19-36
REC. 27-65

10902
6.723 AC.
LND. 10-76
LND. 36-163
LND. 42-188
REC. 19-36
REC. 27-65

The First Lutheran Church
of Troy, Ohio
D.B. 679-606
D.B. 686-201

10901
5.000 AC.
LND. 42-188
REC. 19-36
REC. 27-65

10902
6.723 AC.
LND. 10-76
LND. 36-163
LND. 42-188
REC. 19-36
REC. 27-65

The First Lutheran Church
of Troy, Ohio
D.B. 679-606
D.B. 686-201

10901
5.000 AC.
LND. 42-188
REC. 19-36
REC. 27-65

10902
6.723 AC.
LND. 10-76
LND. 36-163
LND. 42-188
REC. 19-36
REC. 27-65

The First Lutheran Church
of Troy, Ohio
D.B. 679-606
D.B. 686-201

10901
5.000 AC.
LND. 42-188
REC. 19-36
REC. 27-65

10902
6.723 AC.
LND. 10-76
LND. 36-163
LND. 42-188
REC. 19-36
REC. 27-65

The First Lutheran Church
of Troy, Ohio
D.B. 679-606
D.B. 686-201

10901
5.000 AC.
LND. 42-188
REC. 19-36
REC. 27-65

10902
6.723 AC.
LND. 10-76
LND. 36-163
LND. 42-188
REC. 19-36
REC. 27-65

The First Lutheran Church
of Troy, Ohio
D.B. 679-606
D.B. 686-201

10901
5.000 AC.
LND. 42-188
REC. 19-36
REC. 27-65

10902
6.723 AC.
LND. 10-76
LND. 36-163
LND. 42-188
REC. 19-36
REC. 27-65

ANNEXATIONS:
REC. BK. 12 pg. 8
REC. BK. 15 pg. 74
REC. BK. 15 pg. 117

REPLATS
REC. 16-73 - 117671
REC. 16-88 - 1157704 thru 7735
REC. 17-41 - 1158022 thru 8042
REC. 17-61 - 1158127 & 8128
REC. 17-78 - 118168
REC. 17-85 - 11.8168 & Pt. 11.8128
- Replatted into 11.8120
REC. 17-109 118295 thru 8302
REC. 19-149 - Replat of IL 8871

BOING US HOLDCO.
INC
2021OR-19405
REC. 17-120 (vac & ded. of R/W)
REC. 17-121
REC. 17-123 (Replat)
REC. 17-122 (Replat)
REC. 17-147
REC. 18-116 (Replat of Pt. 6512) - Inlot 8754
REC. 18-149A
REC. 18-101, 101A
REC. 18-147, 147A
REC. 18-149, 149A
REC. 19-36 (Annexation)
REC. 19-128

KINGS TOWER SHOPPING CENTER & BUSINESS PARK
SECTION 1 REC. 18-101
SECTION 2 REC. 18-147, 147A (Inlots 8853 & 8854)
SECTION 3 REC. 18-149 & 149A (Inlots 8864-8871)
Replat of IL 8871 - Rec. 19-149 (Lots 9398-9400)

East Troy, LLC
db 762-8
REC. 18-149A
2022OR-14114

REVISED 11/10/22
JA