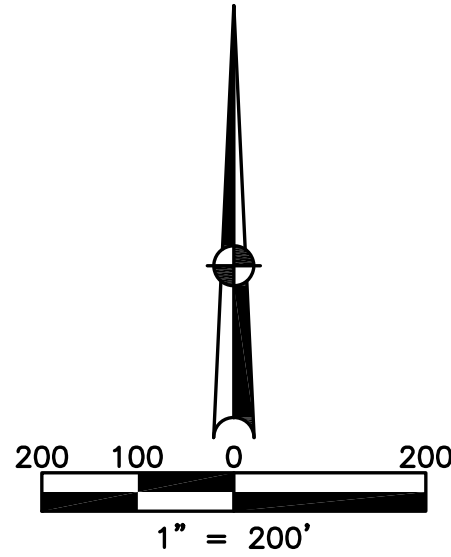


SECTION 30
TOWN 5
RANGE 6

CITY OF TROY
MIAMI COUNTY, OHIO

PARCEL NUMBER
D08-_____

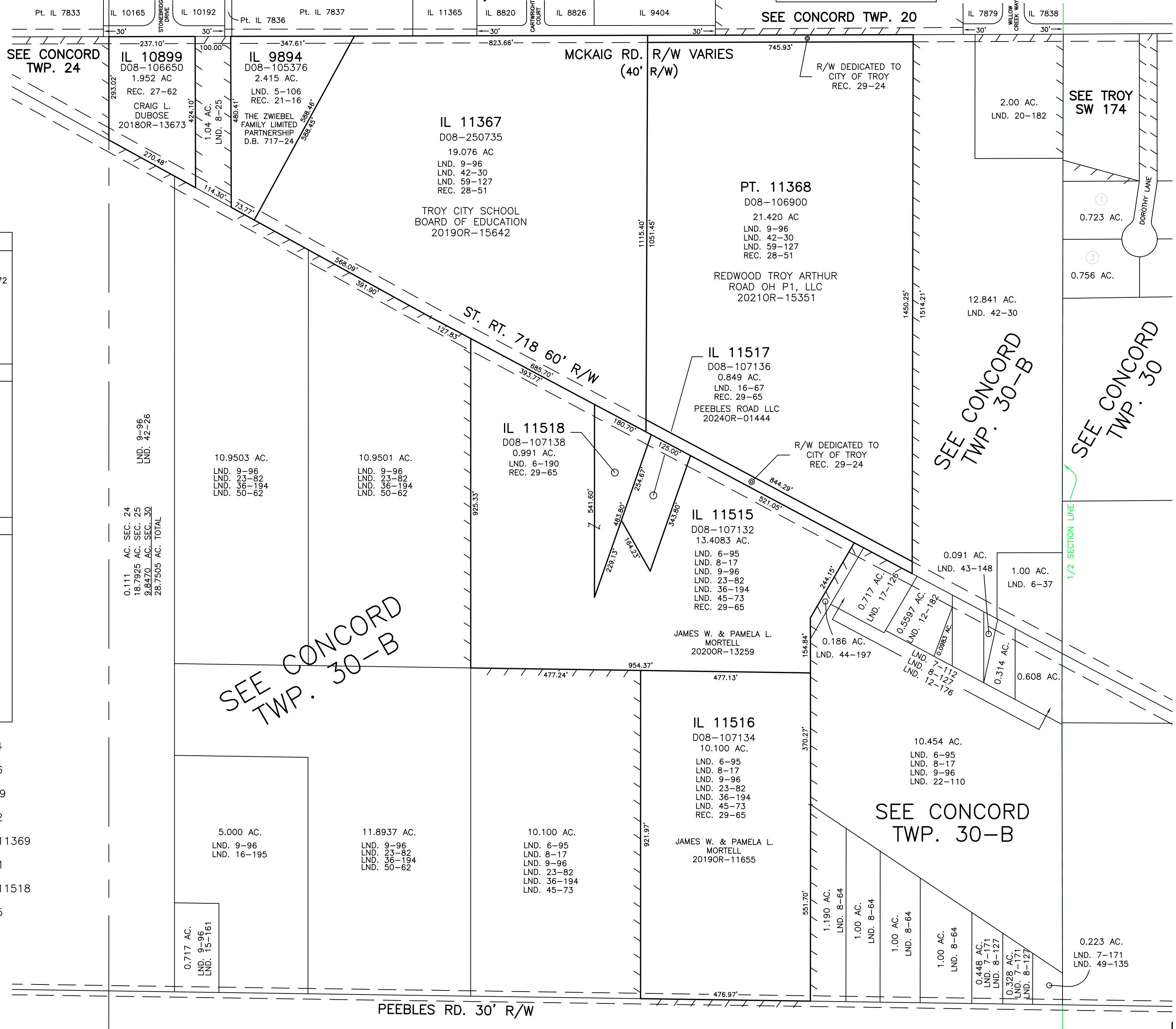
PLAT SW 220



ABBREVIATION LEGEND		
2014OR-00759	=	RECORDER'S DOCUMENT NUMBER
OR 406-509	=	OFFICIAL RECORD 406 PAGE 509
D.B. 613-172	=	DEED BOOK 613, PAGE 172
REC. 15-72	=	RECORDER'S PLAT BOOK 15, PAGE 72
LND. 33-15	=	LAND SURVEY VOLUME 33, PAGE 15
LOT 19-12	=	LOT SURVEY VOLUME 19, PAGE 12
R.R. 8-29	=	ROAD RECORD VOLUME 8, PAGE 29
R/W	=	RIGHT OF WAY
C	=	CENTERLINE
AC.	=	ACRES
TWP.	=	TOWNSHIP
TR.	=	TRACT
IL	=	INLOT

LINE LEGEND	
	Blow-up Boundary
	Property Line
	Lot Split Line
	Section Line
	1/2 Section Line
	Centerline
	Right-of-Way Line
	Corporation Line

SURVEY INDEX		
LND. 1-181	LND. 20-182	REC. 21-16
LND. 5-50	LND. 22-110	REC. 27-62
LND. 5-106	LND. 23-82	REC. 28-51
LND. 6-37	LND. 36-194	REC. 29-24
LND. 6-95	LND. 42-26	REC. 29-65
LND. 6-190	LND. 42-30	
LND. 7-112	LND. 43-148	
LND. 7-112A	LND. 44-197	
LND. 7-171	LND. 45-73	
LND. 8-17	LND. 49-135	
LND. 8-25	LND. 50-62	
LND. 8-64	LND. 59-127	
LND. 8-127		
LND. 9-96		
LND. 12-176		
LND. 12-182		
LND. 15-161		
LND. 16-67		
LND. 16-195		
LND. 17-126		



INLOT 9894
ANNEXED
REC 21-16

INLOT 10899
ANNEXED
REC 27-62

INLOTS 11365-11369
ANNEXED
REC 28-51

INLOTS 11515-11518
ANNEXED
REC 29-65

PREPARED BY: MIAMI COUNTY ENGINEER'S MAP DEPARTMENT
PAUL P. HUELSKAMP, P.E., P.S., COUNTY ENGINEER

DATE: JUN. 17, 2022 APALMER

REVISED: Feb. 14, 2024 DCASSEL

PEEBLES RD. 30' R/W