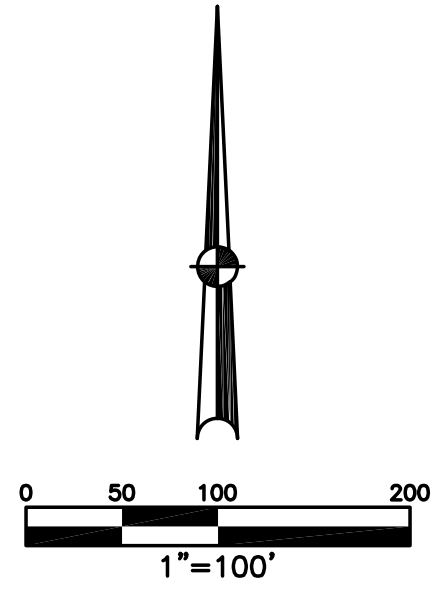


SECTION 8  
TOWN 4  
RANGE 6

PLAT NW 67  
CITY OF TIPP CITY  
MIAMI COUNTY, OHIO



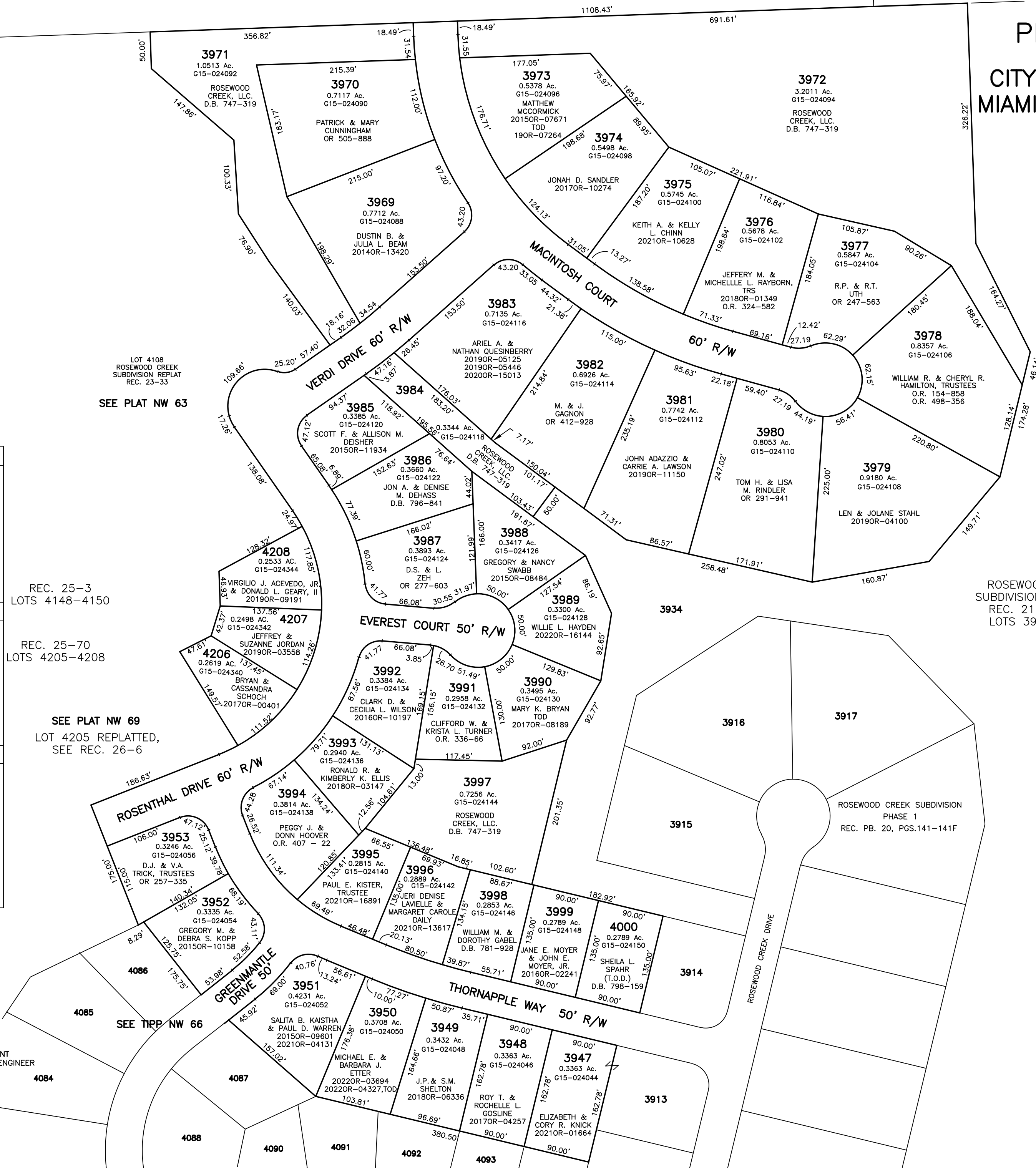
ABBREVIATION LEGEND	
2014OR-07759	= RECORDER'S DOCUMENT NUMBER
G15-024070	= AUDITOR'S PARCEL ID NUMBER
OR 406-509	= OFFICIAL RECORD 406 PAGE 509
D.B. 613-172	= DEED BOOK 613, PAGE 172
REC. 15-72	= RECORDER'S PLAT BOOK 15, PAGE 72
LND. 33-15	= LAND SURVEY VOLUME 33, PAGE 15
LOT 19-12	= LOT SURVEY VOLUME 19, PAGE 12
R.R. 8-29	= ROAD RECORD VOLUME 8, PAGE 29
R/W	= RIGHT OF WAY
C	= CENTERLINE
AC.	= ACRES
TWP.	= TOWNSHIP
TR.	= TRACT
IL	= INLOT

LINE LEGEND	
	Blow-up Boundary
	Property Line
	Lot Split Line
	Section Line
	Centerline
	Right-of-Way Line
	Corporation Line

SURVEY INDEX	
ROSEWOOD CREEK SUBDIVISION, PHASE 2 REC. 21-29-29D LOTS 3947-4000	ANNEXATION REC. 19-118 LOT 3603 (REC. 23-25)
ROSEWOOD CREEK SUBDIVISION REPLAT REC. 23-33 LOT 4108	REPLAT OF INLOTS 4148-4150, PT. IL. 4108 REC. 25-3 LOTS 4148-4150
REPLAT PART INLOT 4108 REC. 25-3 LOTS 4148-4150	REPLAT OF INLOTS 4148-4150, PT. IL. 4108 REC. 25-70 LOTS 4205-4208



LOT 4108  
ROSEWOOD CREEK  
SUBDIVISION REPLAT  
REC. 23-33  
SEE PLAT NW 63

REC. 25-3  
LOTS 4148-4150

REC. 25-70  
LOTS 4205-4208

SEE PLAT NW 69  
LOT 4205 REPLATTED,  
SEE REC. 26-6

SEE TIPP NW 66

3934

ROSEWOOD CREEK  
SUBDIVISION, PHASE 2  
REC. 21-29-29D  
LOTS 3947-4000

PREPARED BY: MIAMI COUNTY ENGINEER'S MAP DEPARTMENT  
PAUL P. HUELSKAMP P.E., P.S., COUNTY ENGINEER  
DATE: AUGUST 7, 2007 DGS  
REVISED: November 9, 2022 APALMER