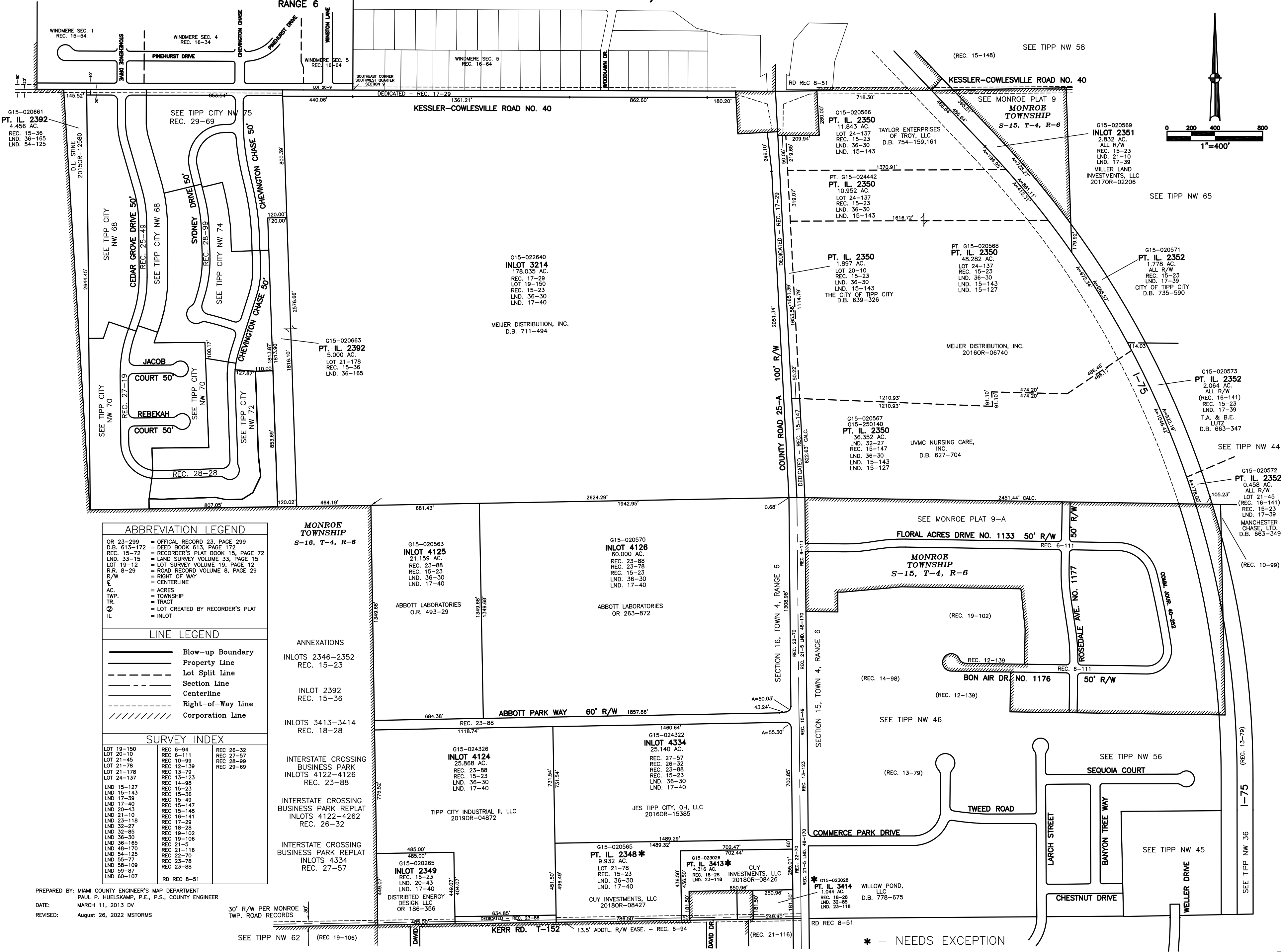
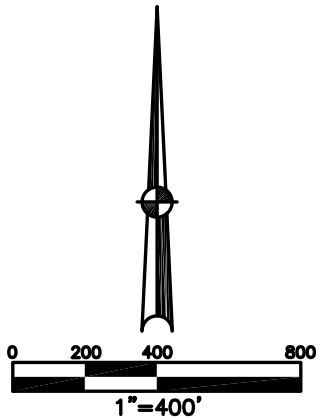


CITY OF TIPP CITY  
MIAMI COUNTY, OHIO

PLAT NW 47

SECTION 15 & 16  
TOWN 4  
RANGE 6



**ABBREVIATION LEGEND**

OR 23-299	= OFFICIAL RECORD 23, PAGE 299
D.B. 613-172	= DEED BOOK 613, PAGE 172
REC. 15-72	= RECORDER'S PLAT BOOK 15, PAGE 72
LND. 33-15	= LAND SURVEY VOLUME 33, PAGE 15
LOT 19-12	= LOT SURVEY VOLUME 19, PAGE 12
R.R. 8-29	= ROAD RECORD VOLUME 8, PAGE 29
R/W	= RIGHT OF WAY
AC	= CENTERLINE
AC	= ACRES
TWP.	= TOWNSHIP
TR.	= TRACT
⊙	= LOT CREATED BY RECORDER'S PLAT
IL	= INLOT

**LINE LEGEND**

—	Blow-up Boundary
—	Property Line
- - -	Lot Split Line
- - -	Section Line
- - -	Centerline
- - -	Right-of-Way Line
- - -	Corporation Line

**SURVEY INDEX**

LOT 19-150	REC 6-94	REC 26-32
LOT 20-10	REC 6-111	REC 27-57
LOT 21-45	REC 10-99	REC 10-99
LOT 21-78	REC 12-139	REC 29-69
LOT 21-178	REC 13-79	
LOT 24-137	REC 13-123	
LND 15-127	REC 14-98	
LND 15-143	REC 15-23	
LND 17-39	REC 15-49	
LND 17-40	REC 15-147	
LND 20-43	REC 15-148	
LND 21-10	REC 16-141	
LND 23-118	REC 17-29	
LND 32-27	REC 18-28	
LND 32-85	REC 19-102	
LND 36-30	REC 19-106	
LND 36-165	REC 21-5	
LND 48-170	REC 21-116	
LND 54-125	REC 22-70	
LND 55-77	REC 23-78	
LND 58-109	REC 23-88	
LND 59-87	REC 23-88	
LND 60-107	RD REC 8-51	

PREPARED BY: MIAMI COUNTY ENGINEER'S MAP DEPARTMENT  
PAUL P. HUELSKAMP, P.E., P.S., COUNTY ENGINEER  
DATE: MARCH 11, 2013 DV  
REVISED: August 26, 2022 M5TORMS

30' R/W PER MONROE TWP. ROAD RECORDS

\* - NEEDS EXCEPTION