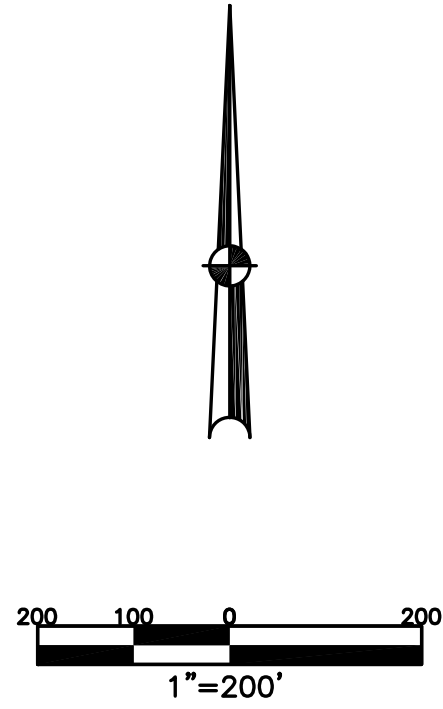


SECTION 15
TOWN 4
RANGE 6

CITY OF TIPP CITY
MIAMI COUNTY, OHIO

PARCEL ID NUMBER
G15-_____

PLAT NW 46



ANNEXATION
REC. 13-79
LOTS 2135-2148

ANNEXATION
REC. 14-98
LOTS 2253-2255

ANNEXATION
REC. 19-102
LOTS 3510-3512

RIESSER INDUSTRIAL PARK
SECTION 1
REC. 13-123
LOTS 2155-2159

SECTION 2
REC. 15-48
LOTS 2416-2417

SECTION 3
REC. 15-49
LOTS 2418-2419

MONROE TOWNSHIP
SEC. 15, TOWN 4, RANGE 6

ABBREVIATION LEGEND		
20140R-07759	=	RECORDER'S DOCUMENT NUMBER OR 406-509
D.B. 613-172	=	DEED BOOK 613, PAGE 172
REC. 15-72	=	RECORDER'S PLAT BOOK 15, PAGE 72
LND. 33-15	=	LAND SURVEY VOLUME 33, PAGE 15
LOT 19-12	=	LOT SURVEY VOLUME 19, PAGE 12
R.R. 8-29	=	ROAD RECORD VOLUME 8, PAGE 29
R/W	=	RIGHT OF WAY
C	=	CENTERLINE
AC.	=	ACRES
TWP.	=	TOWNSHIP
TR.	=	TRACT
IL	=	INLOT

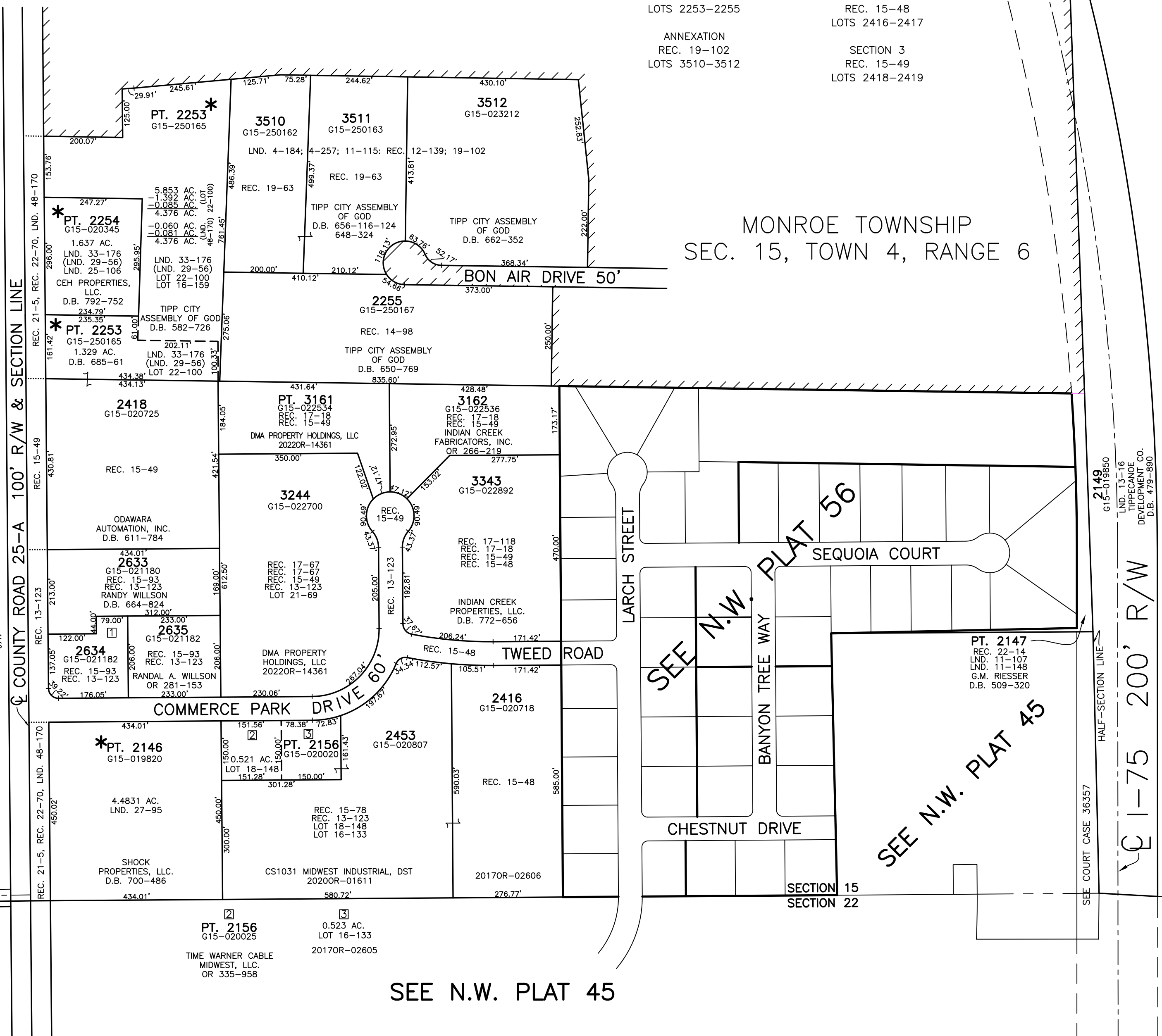
LINE LEGEND		
	=	Blow-up Boundary
	=	Property Line
	=	Lot Split Line
	=	Section Line
	=	Centerline
	=	Right-of-Way Line
	=	Corporation Line

SURVEY INDEX		
REC. 9-145	LOT 16-133	LND. 4-184
REC. 12-139	LOT 18-51	LND. 4-257
REC. 13-123	LOT 18-148	LND. 11-115
REC. 14-98	LOT 21-69	LND. 11-148
REC. 15-48	LOT 22-100	LND. 13-16
REC. 15-49		LND. 16-159
REC. 15-78		LND. 25-106
REC. 15-90		LND. 27-95
REC. 17-18		LND. 29-56
REC. 17-67		LND. 33-176
REC. 17-118		LND. 48-170
REC. 19-63		
REC. 19-102		
REC. 21-5		
REC. 22-70		

FREDERICK M. &
BECKY B. SACKS
D.B. 700-627

*-NEEDS EXCEPTION

KERR ROAD



PREPARED BY: MIAMI COUNTY ENGINEER'S MAP DEPARTMENT
PAUL P. HUELSKAMP, P.E., P.S., COUNTY ENGINEER
DATE: MARCH 8, 2018 MDB
REVISED: October 3, 2022 JVINCENT

SEE N.W. PLAT 45

SEE N.W. PLAT 56
SEE N.W. PLAT 45

SEE COURT CASE 36357
SEE COURT CASE 36357