

MIAMI COUNTY, OHIO

RANGE II TOWN I

SECTION 28

STAUNTON TOWNSHIP

PLAT NO. 35

SCALE: 1" = 400'

SMDA NUMBER
K30-ST035

SURVEYS

NORTHEAST

SUR. VOL. 12, PG. 141
SUR. VOL. 8, PG. 169
SUR. VOL. 37, PG. 50
LND 43 PG. 34
REC. 26-96
R5MD 170

SOUTHEAST

SUR. VOL. 11, PG. 60
SUR. VOL. 4, PG. 75
SUR. VOL. 20, PG. 18
SUR. VOL. 12, PG. 140
SUR. VOL. 1, PG. 250
SUR. VOL. 37, PG. 50
LND SUR. 40 PG. 138
LND 43 PG. 34
LND. 56-58
REC. 25-42, R5MD 161
LND. 58-40

SOUTHWEST

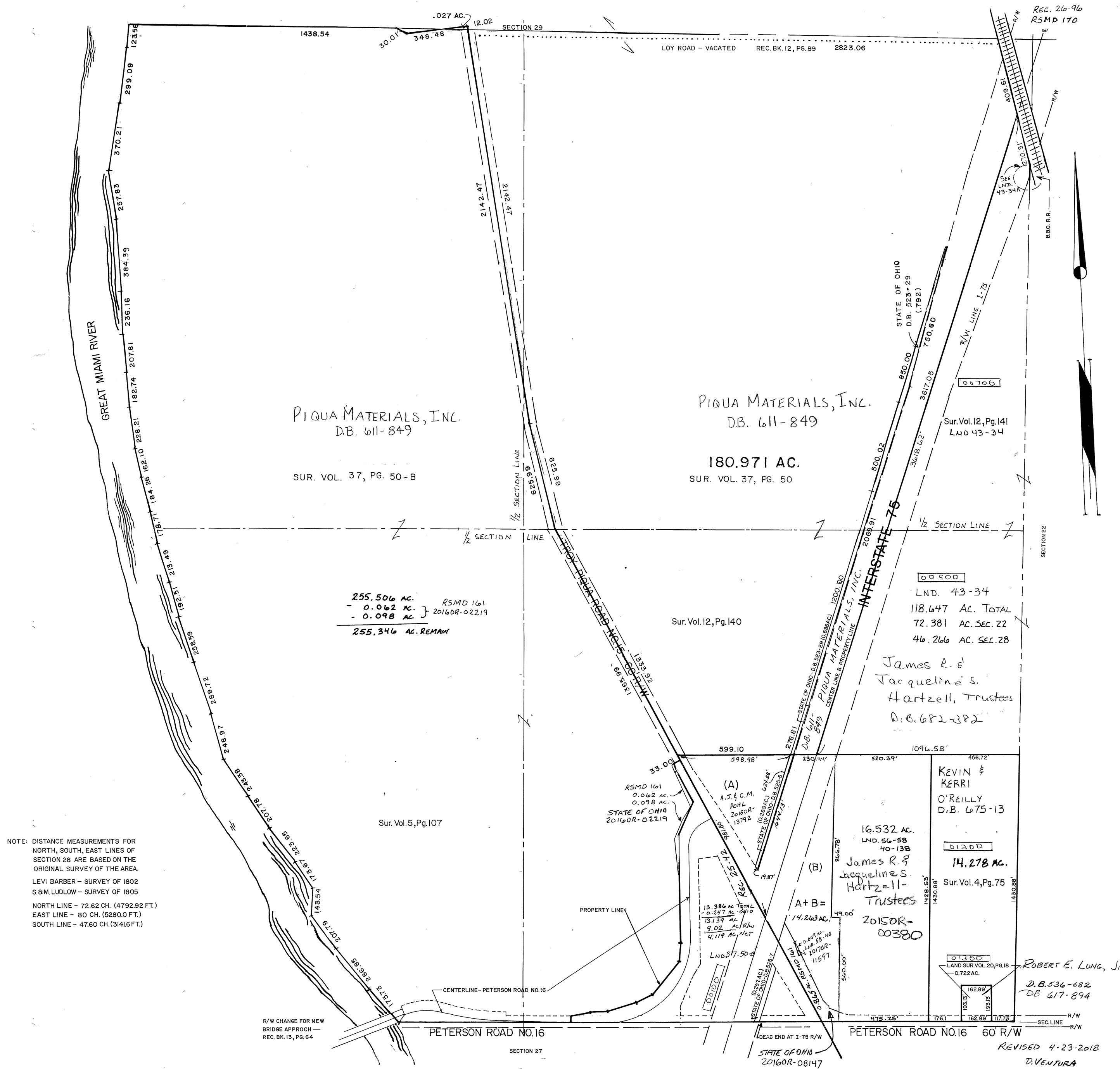
SUR. VOL. 5, PG. 107
SUR. VOL. 2, PG. 24
SUR. VOL. 37, PG. 50B

REC. BK. 13, PG. 64

NORTHWEST

SUR. VOL. 37, PG. 50B

NOTE: DISTANCE MEASUREMENTS FOR NORTH, SOUTH, EAST LINES OF SECTION 28 ARE BASED ON THE ORIGINAL SURVEY OF THE AREA.
LEVI BARBER - SURVEY OF 1802
S.M. LUDLOW - SURVEY OF 1805
NORTH LINE - 72.62 CH. (4792.92 FT.)
EAST LINE - 80 CH. (5280.0 FT.)
SOUTH LINE - 47.60 CH. (3141.6 FT.)



R/W CHANGE FOR NEW BRIDGE APPROACH - REC. BK. 13, PG. 64

REVISED 4-23-2018
D. VENTURA