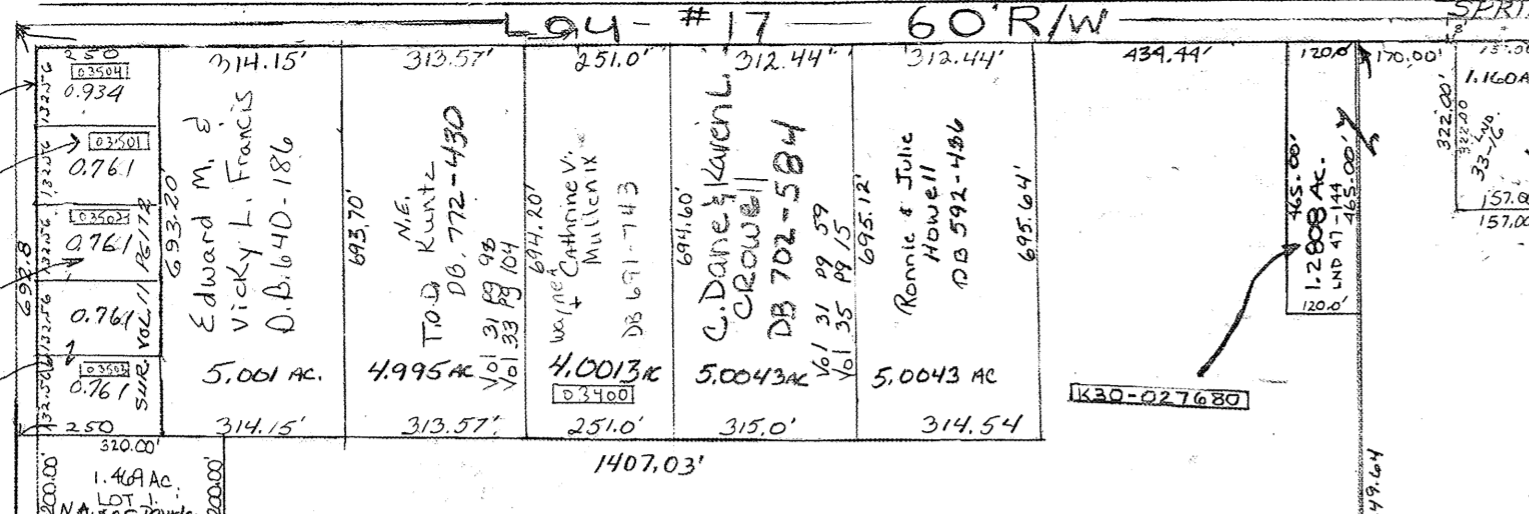


Gregory A. & Linda K. Baker
OR 294-753

Carole Hasted
2012 OR-00229

P. E. & K. D. Hutchinson
2016 OR-09738

Harold & Susan J. Brumfield
D.B. 573-312



Constance E. Strobel
D.B. 755-857
TOD. D.B. 768-60

LND 36-58
50.9776 Ac.

1979.72'

2043.48'

372.00'

347.00'

317.00'

317.00'

317.00'

317.00'

317.00'

317.00'

317.00'

317.00'

317.00'

317.00'

317.00'

317.00'

317.00'

317.00'

317.00'

317.00'

317.00'

317.00'

317.00'

317.00'

317.00'

317.00'

317.00'

317.00'

317.00'

317.00'

317.00'

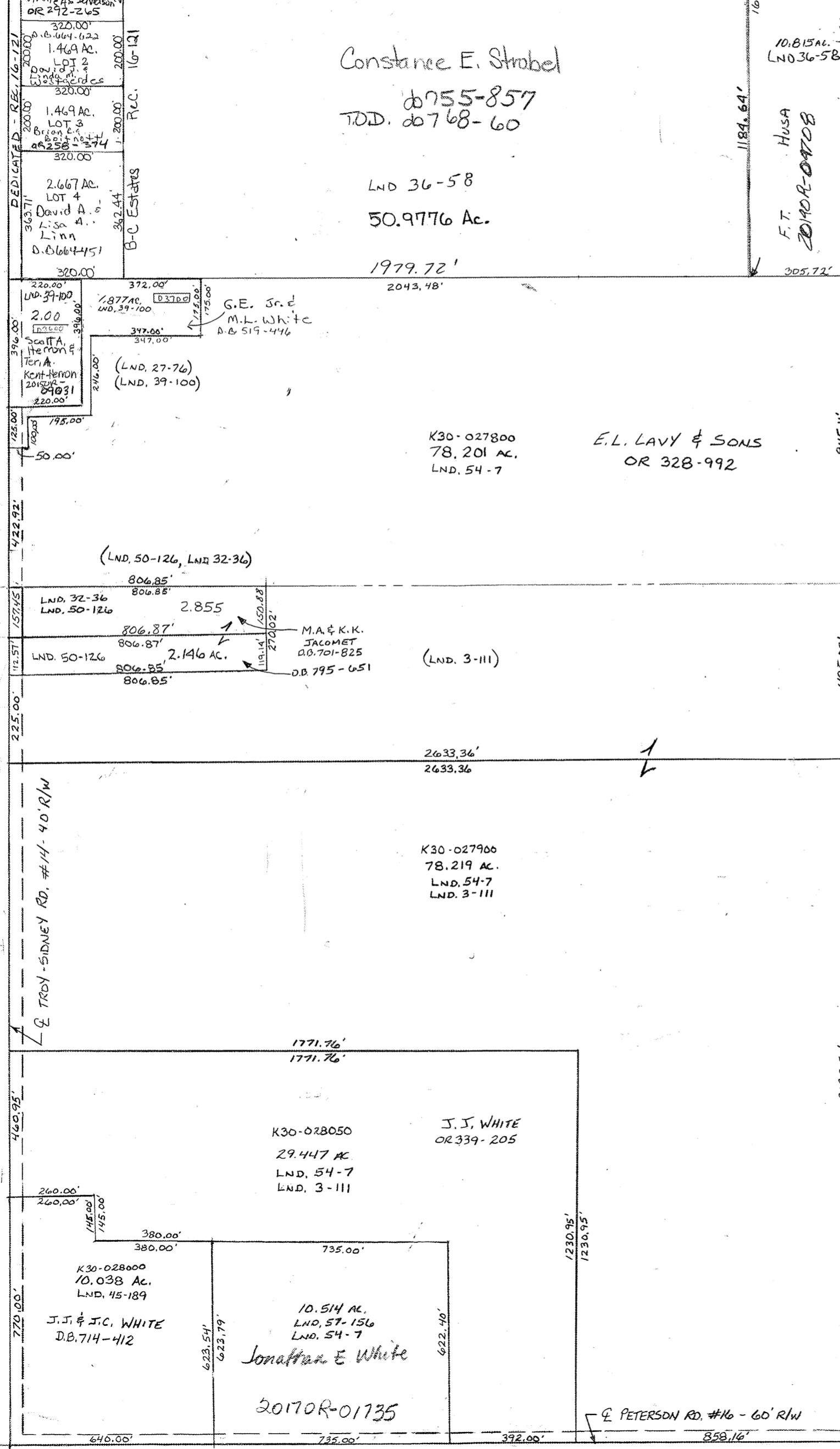
317.00'

317.00'

- VOLTA WEST QUARTER
- Vol 11 Pg 172
 - Vol 31 Pg 59
 - Vol 31 Pg 98
 - Vol 33 Pg 104
 - Vol 35 Pg 15
 - Vol 47 Pg 144

- Surveys
- Vol 1 Pg 209-whole
 - Vol 3 Pg 111-SW 1/4
 - Vol 5 Pg 179-L 1/2 SE
 - Vol 7 Pg 60-S Cen. Pt SE
 - Vol 12 Pg 172-NW Cor. NW
 - Vol Div 1 Pg 68-S Cen. Pt NE
 - Vol 14 Pg 81-NE Cor. NE
 - Vol 15 Pg 150-N.E. Pt NE
 - Vol 16 Pg 95-S. Cen. Pt NE
 - Vol 17 Pg 74-E. Cen. Pt NE
 - Vol 17 Pg 108-N.W. Pt NE

- Sub Div 1 Pg 120-Cen. Pt NE



SEE PLAT 24A

SEE PLAT 24-A FOR NE 1/4

78.000
2.619
75.3864
-3.0000
72.3864

12.698
-1.750
11.948A

K30-ST024-
SMDA NUMBER

SCALE - 1" = 330'

