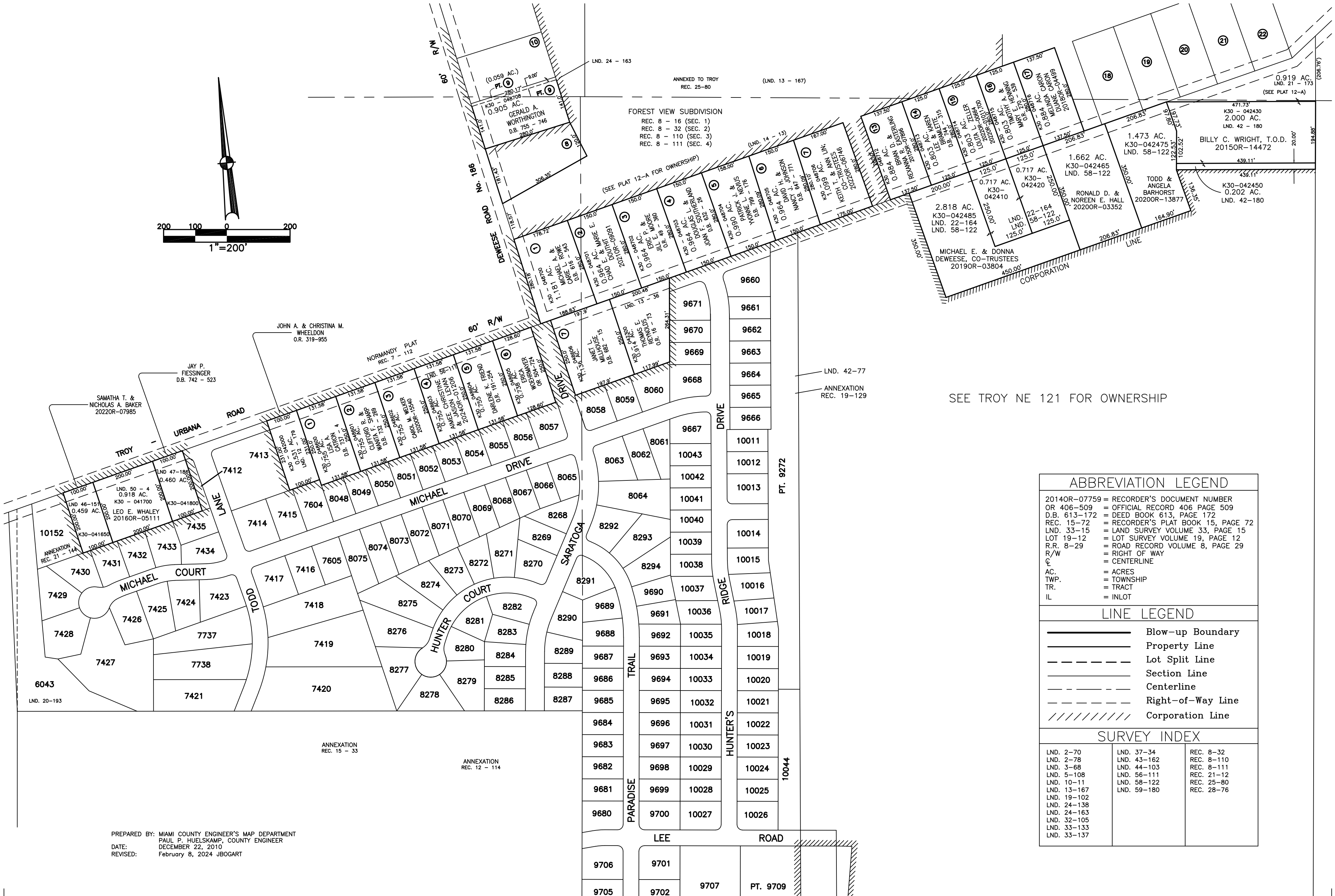
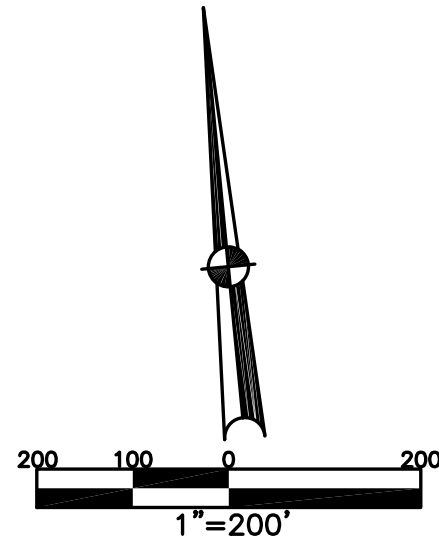


TOWNSHIP OF STAUNTON
MIAMI COUNTY, OHIO

PART NORTH HALF
SECTION 12 TOWN 1 RANGE 10

PARCEL NUMBER
K30-_____

PLAT 20A



SEE TROY NE 121 FOR OWNERSHIP

ABBREVIATION LEGEND	
2014OR-07759	= RECORDER'S DOCUMENT NUMBER
OR 406-509	= OFFICIAL RECORD 406 PAGE 509
D.B. 613-172	= DEED BOOK 613, PAGE 172
REC. 15-72	= RECORDER'S PLAT BOOK 15, PAGE 72
LND. 33-15	= LAND SURVEY VOLUME 33, PAGE 15
LOT 19-12	= LOT SURVEY VOLUME 19, PAGE 12
R.R. 8-29	= ROAD RECORD VOLUME 8, PAGE 29
R/W	= RIGHT OF WAY
C	= CENTERLINE
AC.	= ACRES
TWP.	= TOWNSHIP
TR.	= TRACT
IL	= INLOT

LINE LEGEND	
	Blow-up Boundary
	Property Line
	Lot Split Line
	Section Line
	Centerline
	Right-of-Way Line
	Corporation Line

SURVEY INDEX		
LND. 2-70	LND. 37-34	REC. 8-32
LND. 2-78	LND. 43-162	REC. 8-110
LND. 3-68	LND. 44-103	REC. 8-111
LND. 5-108	LND. 56-111	REC. 21-12
LND. 10-11	LND. 58-122	REC. 25-80
LND. 13-167	LND. 59-180	REC. 28-76
LND. 19-102		
LND. 24-138		
LND. 24-163		
LND. 32-105		
LND. 33-133		
LND. 33-137		

PREPARED BY: MIAMI COUNTY ENGINEER'S MAP DEPARTMENT
PAUL P. HUELSKAMP, COUNTY ENGINEER
DATE: DECEMBER 22, 2010
REVISED: February 8, 2024 JBOGART