

RANGE II

TOWN I

SECTION 10

STAUNTON TOWNSHIP

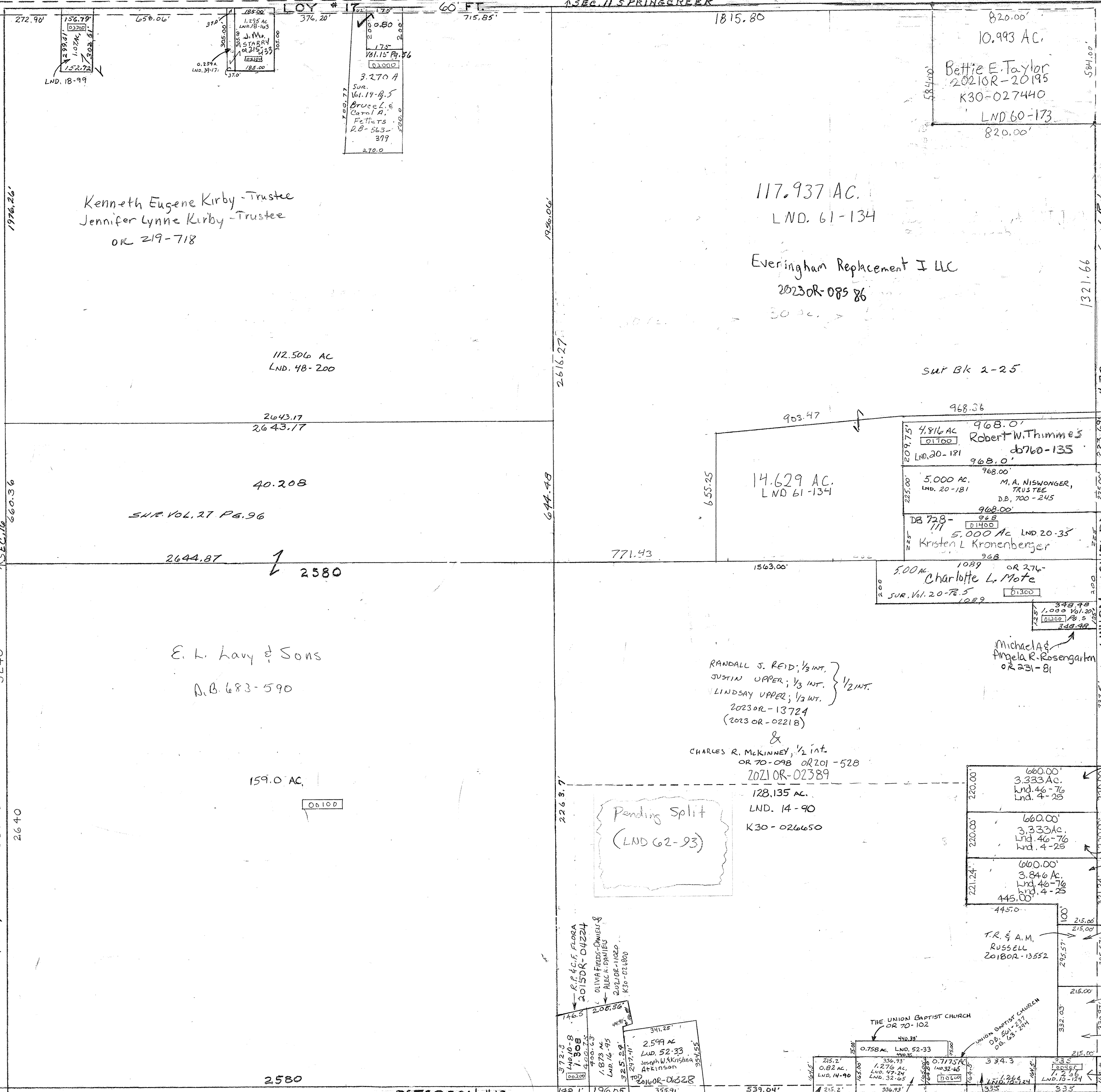
PLAT NO. 18

60 FT.

1/2 SEC. 11 SPRINGCREEK

Vol. 13 - Pg. 169 - SE. 1/4, S.E. 1/4
 Vol. 14 - Pg. 90 - SE. 1/4
 Vol. 15 - Pg. 56 - S.E. 1/4, N.W. 1/4
 Vol. 16 - Pg. 95 - S.W. 1/4, S.E. 1/4
 Vol. 20 - Pg. 35 - S.E. 1/4, N.E. 1/4
 5240

2-25-EK.NE
 VOL. 4-25-E. Con. P. 4 SE.
 10-8-SW. Con. SE.
 10-124-SE. Con. SE.



SMO NUMBER
K30-ST018

SCALE - 1" = 330'

REVISED
12-12-08-21

JEREMY & KATHARINE
HOWARD
2022OR-09503

Richard L. & Myra L.
Mann
2019OR-10968

Nicole & Adam G.
Sluss
2022OR-01524

K30-027200
1.459 AC
LND. 58-184
LND. 46-76
LND. 13-164

1.636 AC,
LND. 58-184
LND. 46-76
LND. 13-164
B. & D. HEWLETT Trees
2023OR-05085

Trevi's J. & Amanda
Vojzard
2020OR-11357

Rev. 12/1/2023
88

PETERSON #16

60' R/W

SEC. 9

M.A. & C. DEAL
D.B. 541-535

UNION BAPTIST CHURCH
D.B. 720-244
D.B. 722-548

KEVIN M. VORE
2019OR-00950