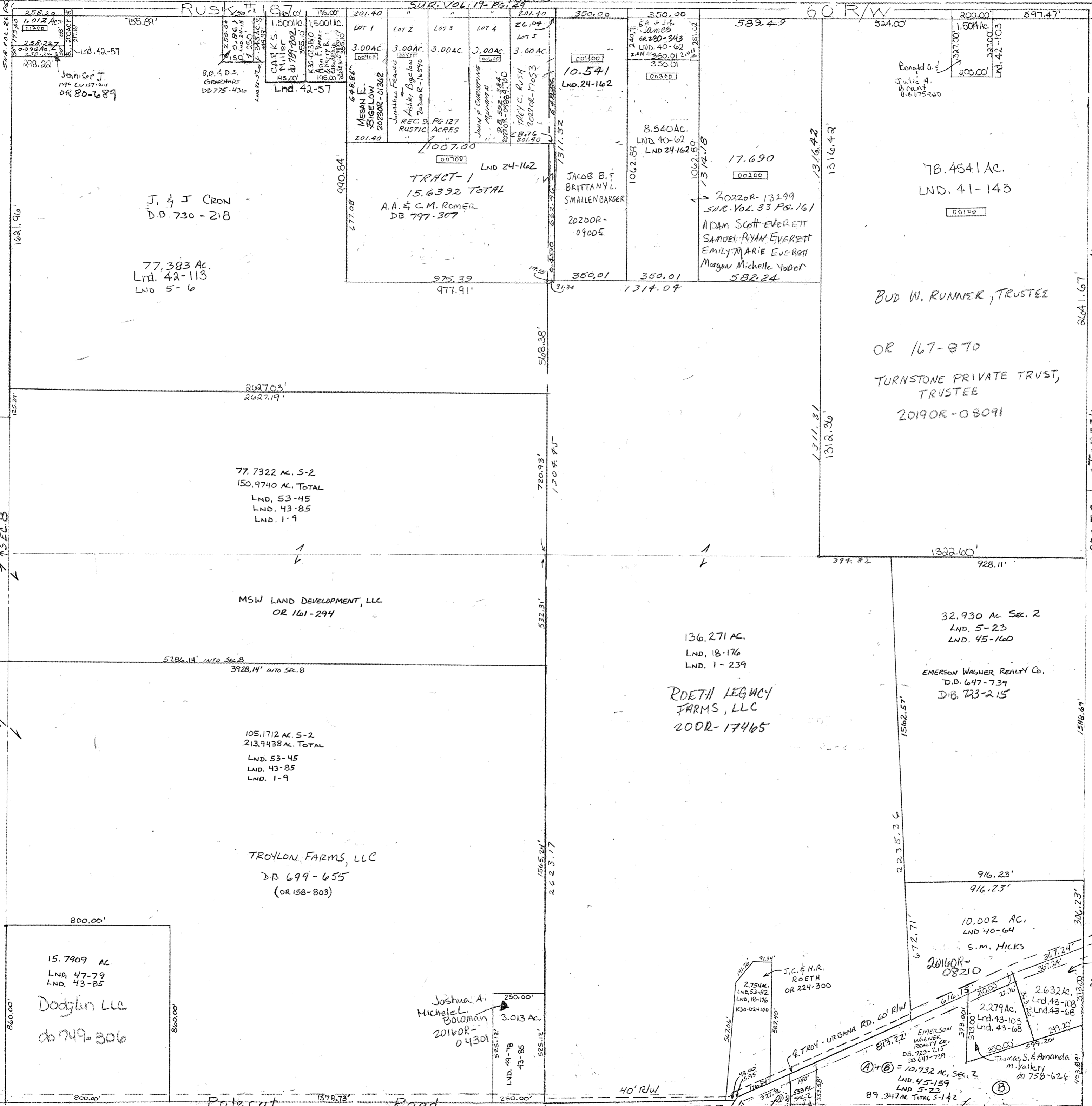


Surveys

Vol. 1 Pg. 9 - W 1/2 Sec
 Vol. 1 Pg. 239 - SE QTR
 Vol. 1 Pg. 6 - N F 1/4 W
 Vol. 5 Pg. 23 - E Side SE

LND. 43-68 SE Pt. SE QTR.
 LND. 43-103 SE Pt. SE QTR.
 LND. 49-78 SE Pt. SW QTR.
 LND. 40-64 SE 1/4
 LND. 41-143 NE 1/4
 LND. 42-57 NW QTR & N. Cor. Pt. NW QTR.
 LND. 42-103 NE Cor. NE QTR.
 LND. 42-113 N. Cor. Pt. NW QTR.



PARCEL NUMBER
K30 -

SCALE - 1" = 330



REvised 08/23/2023
DC

15.7909 AC.
LND. 47-79
LND. 43-85
Dodglin LLC
db 749-306

105,1712 AC. S-2
213,9438 AC. TOTAL
LND. 53-45
LND. 43-85
LND. 1-9
TROYLON FARMS, LLC
DB 699-655
(OR 158-803)

136,271 AC.
LND. 18-176
LND. 1-239
ROETH LEGACY FARMS, LLC
200R-17465

32.930 AC. Sec. 2
LND. 5-23
LND. 45-160
EMERSON WAGNER REALTY Co.
D.B. 647-739
D.B. 723-215

BUD W. RUNNER, TRUSTEE

OR 167-870
TURNSTONE PRIVATE TRUST, TRUSTEE
2019OR-08091

1007.00
LND. 24-162
TRACT-1
15.6392 TOTAL
A.A. & C.M. Romer
DB 797-307

J. & J. CRON
D.B. 730-218

77,383 AC.
LND. 42-113
LND. 5-6

77,7322 AC. S-2
150,9740 AC. TOTAL
LND. 53-45
LND. 43-85
LND. 1-9

MSW LAND DEVELOPMENT, LLC
OR 161-294

JACOB B. & BRITTANY L. SMALLENBARGER
2020OR-09005

8.540 AC.
LND. 40-62
LND. 24-162
1062.89

ADAM SCOTT EVERETT
SAMUEL RYAN EVERETT
EMILY MARIE EVERETT
Morgan Michelle Yoder
582.24

78.4541 AC.
LND. 41-143

916.23'
916.23'

10.002 AC.
LND. 40-64
S.M. HICKS

2.279 AC.
LND. 43-103
LND. 43-68
2.632 AC.
LND. 43-103
LND. 43-68
249.20'
350.00'
599.20'
Thomas S. & Amanda m. Vallery
db 758-626

Teresa Kenney
2019OR-06772
2022OR-16166 (TOD)

Joshua A. Michele L. Bowman
2016OR-04301

J.C. & H.R. ROETH
OR 224-300

EMERSON WAGNER REALTY CO.
DB. 723-215
DB. 647-739
A+B = 10,932 AC. Sec. 2
LND. 45-159
LND. 5-23
89,347 AC. TOTAL 5-142

SEE SEC. 1 FOR OWNERSHIP