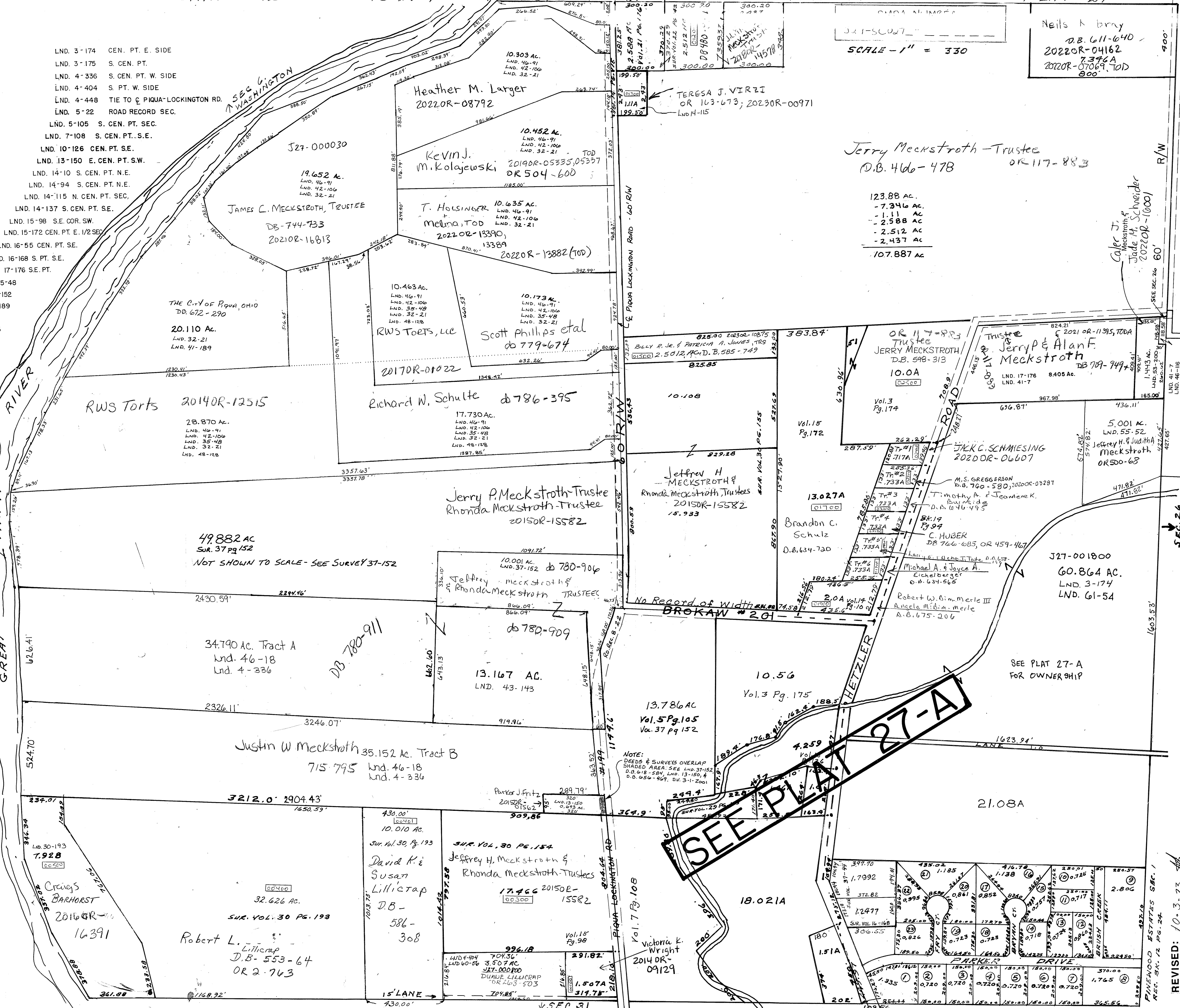


- LND. 3-174 CEN. PT. E. SIDE
- LND. 3-175 S. CEN. PT.
- LND. 4-336 S. CEN. PT. W. SIDE
- LND. 4-404 S. PT. W. SIDE
- LND. 4-448 TIE TO P. PIQUA-LOCKINGTON RD.
- LND. 5-22 ROAD RECORD SEC.
- LND. 5-105 S. CEN. PT. SEC.
- LND. 7-108 S. CEN. PT. S.E.
- LND. 10-126 CEN. PT. S.E.
- LND. 13-150 E. CEN. PT. S.W.
- LND. 14-10 S. CEN. PT. N.E.
- LND. 14-94 S. CEN. PT. N.E.
- LND. 14-115 N. CEN. PT. SEC.
- LND. 14-137 S. CEN. PT. S.E.
- LND. 15-98 S.E. COR. SW.
- LND. 15-172 CEN. PT. E. 1/2 SEC.
- LND. 16-55 CEN. PT. S.E.
- LND. 16-168 S. PT. S.E.
- ND. 17-176 S.E. PT.
- .35-48
- 37-152
- 41-189
- 7
- 193
- 54

SCALE - 1" = 330

Neils & bray
D.B. 611-640
2022OR-04162
7346A
2022OR-07069, TOD
800'



Jerry Meckstroth - Trustee
D.B. 466-478 OR 117-883

123.88 AC.
-7.346 AC.
-1.11 AC.
-2.588 AC.
-2.512 AC.
-2.437 AC.
107.887 AC

Caler J. Meckstroth & Jade M. Schneider
2022OR-10001

SEE PLAT 27-A

REVISED: 10-3-23

SEE PLAT 27-A FOR OWNERSHIP

NOTE: DEEDS & SURVEYS OVERLAP SHADED AREA: SEE LND. 37-152, D.B. 618-584, LND. 13-150, 4, D.B. 656-469, DV. 3-1-2001

Craig's BARHORST
2016OR-16391

Robert L. Lillcrap
D.B. 553-64
OR 2-763

David K. & Susan Lillcrap
D.B. 586-308

Jeffrey H. Meckstroth & Rhonda Meckstroth - Trustees
17466 2015OR-15582

Victoria K. Wright
2014OR-09129

