

ASHELBY CO.

NOTE: DEEDS MARKED * ARE DEEDS TO THE TRUSTEES OF SPRING CREEK TWP. FOR 20' MEASURED FROM THE E. GEISERMAN ROAD. ALTHOUGH THEY ARE QUIT CLAIM & TRUSTEES DEEDS, WE ARE GOING TO TREAT THEM AS EASEMENTS AS NOT TO NEGATE THE SURVEYS DONE IN THE AREA. ALSO, AUDITOR "OK'ED" - NOT TRANSFERRED DEEDS, ALSO INDICATING EASEMENTS. NO TRANSFERS WERE MADE IN THE AUDITOR'S TRANSFER BOOK.

D. VENTURA
 DEP. ENG.
 9-10-2009

Kelly A.
 Earhart, Trustee
 DB 735-481

Washington Township
 Sec. 33

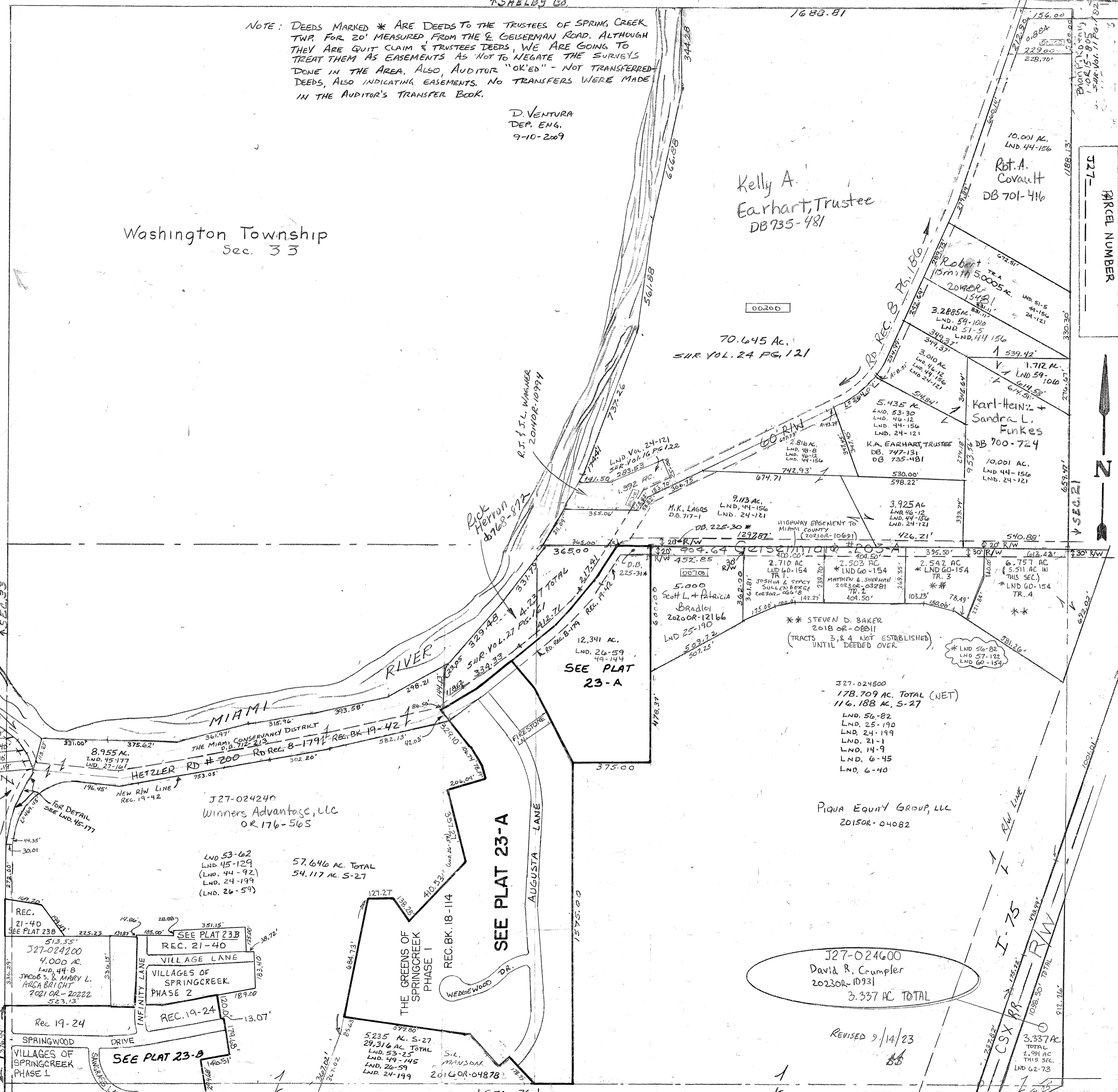
527- PARCEL NUMBER



- Surveys -
- Vol. 2 Pg. 144 - SE PT SE
- Vol. 6 Pg. 40 - S Cen PT SE
- Vol. 6 Pg. 45 - S Cen PT SE
- Vol. 9 Pg. 68 - W Cen PT SW
- Vol. 11 Pg. 182 - NE CORNER
- Vol. 14 Pg. 9 - Cen Pt SE
- Vol. 16 Pg. 122 - S.W. Pt N.E.
- Vol. 62 Pg. 73 - SE Pt SE

FOR OWNERSHIP
 SEE PLAT 28

FOR DETAIL
 SEE LND. 45-177



J27-024240
 Winners Advantage, LLC
 OR 176-565

57,646 AC. TOTAL
 54,117 AC. S-27

SEE PLAT 23-A

J27-024500
 178,709 AC. TOTAL (NET)
 116,188 AC. S-27

PIQUA EQUITY GROUP, LLC
 2015OR-04082

J27-024600
 David R. Crumpler
 2023OR-10931
 3,337 AC. TOTAL

REVISED 9/14/23

Revised: 10/04/2023

SEE PLAT 23-B

5,235 AC. S-27
 29,316 AC. TOTAL
 LND. 53-25
 LND. 49-145
 LND. 26-59
 LND. 24-199

3,337 AC. TOTAL
 2,991 AC. THIS SEC.
 LND. 62-73