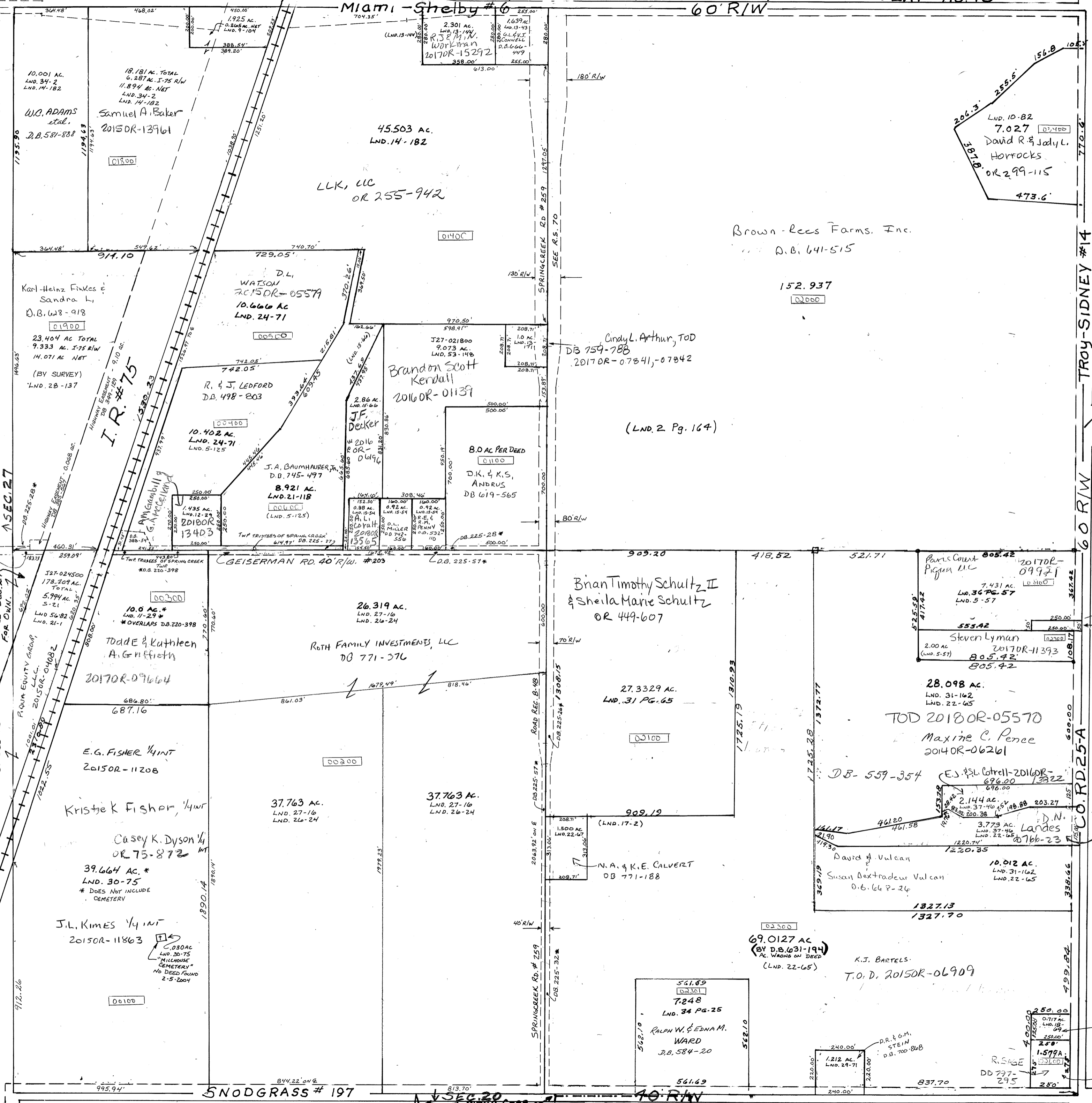


NOTE: DEED REFERENCES MARKED * ARE DEEDS TO THE TRUSTEES OF SPRING CREEK TWP. FOR 20 MEASURED FROM THE E. OF GEISERMAN ROAD. ALTHOUGH THEY ARE QUIT CLAIM & TRUSTEES DEEDS, WE ARE GOING TO TREAT THEM AS EASEMENTS AS NOT TO NEGATE THE SURVEYS DONE IN THE AREA. ALSO, AUDITOR OKED - NOT "TRANSFERRED" - DEEDS, ALSO INDICATING EASEMENTS. NO TRANSFERS WERE MADE IN THE AUDITOR'S TRANSFER BOOK. D. VENTURA DEP ENG 9-10-2009

- Pg. 54 - N.E. Cor. S.E.
- Pg. 29 - S. Cent. Pt. N.W.
- Pg. 43 - N.E. Cor. N.W.
- Pg. 144 - N.E. Pt. N.W.
- Pg. 171 - E. Cent. Pt. N.W.
- Pg. 182 - N. 1/2 N.W.
- Pg. 54 - S.E. Pt. N.W.
- Pg. 66 - S. Cent. Pt. N.W.
- Pg. 2 - S. Pt. S.E.
- Pg. 69 - S.E. Cor. S.E.
- Vol. 11 - N.E. Cor. S.E.
- Vol. 12 - S. Cent. Pt. N.W.
- Vol. 13 - N.E. Cor. N.W.
- Vol. 13 - N.E. Pt. N.W.
- Vol. 14 - E. Cent. Pt. N.W.
- Vol. 15 - N. 1/2 N.W.
- Vol. 15 - S.E. Pt. N.W.
- Vol. 17 - S. Cent. Pt. N.W.
- Vol. 18 - S. Pt. S.E.
- Pg. 164 - S.W. Cor. S.E.
- Pg. 57 - N.E. Cor. S.E.
- Pg. 125 - Cent. Pt. N.W.
- Pg. 45 - Sec. Line between NW 1/4 & N.W.
- Pg. 104 - N. Cent. Pt. N.W.
- Vol. 2 - S.W. Cor. S.E.
- Vol. 5 - N.E. Cor. S.E.
- Vol. 5 - Cent. Pt. N.W.
- Vol. 6 - Sec. Line between NW 1/4 & N.W.
- Vol. 9 - N. Cent. Pt. N.W.



SMDA NUMBER
527-SC018

No record of width
TROY-SIDNEY #14
60' R/W
SEC. 15

60' R/W
SEC. 25-A
CO. RD. 25-A

REVISED 9-30-2016
D. VENTURA

STEVEN M. WARD
O.R. 114-208

(LND. 22-65)