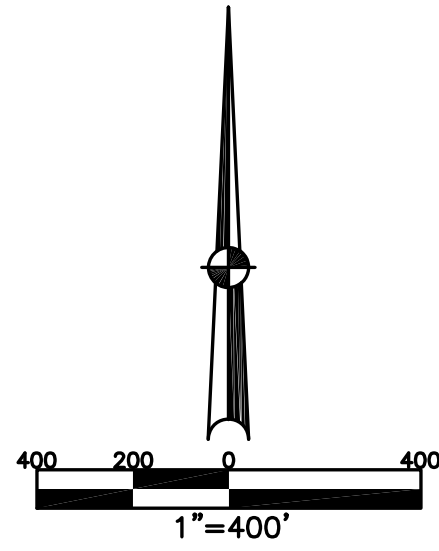


SPRING CREEK TWP.
MIAMI COUNTY, OHIO

SECTION 17 TOWN 1 RANGE 11

PARCEL NUMBER
J27-
J28-

PLAT 14

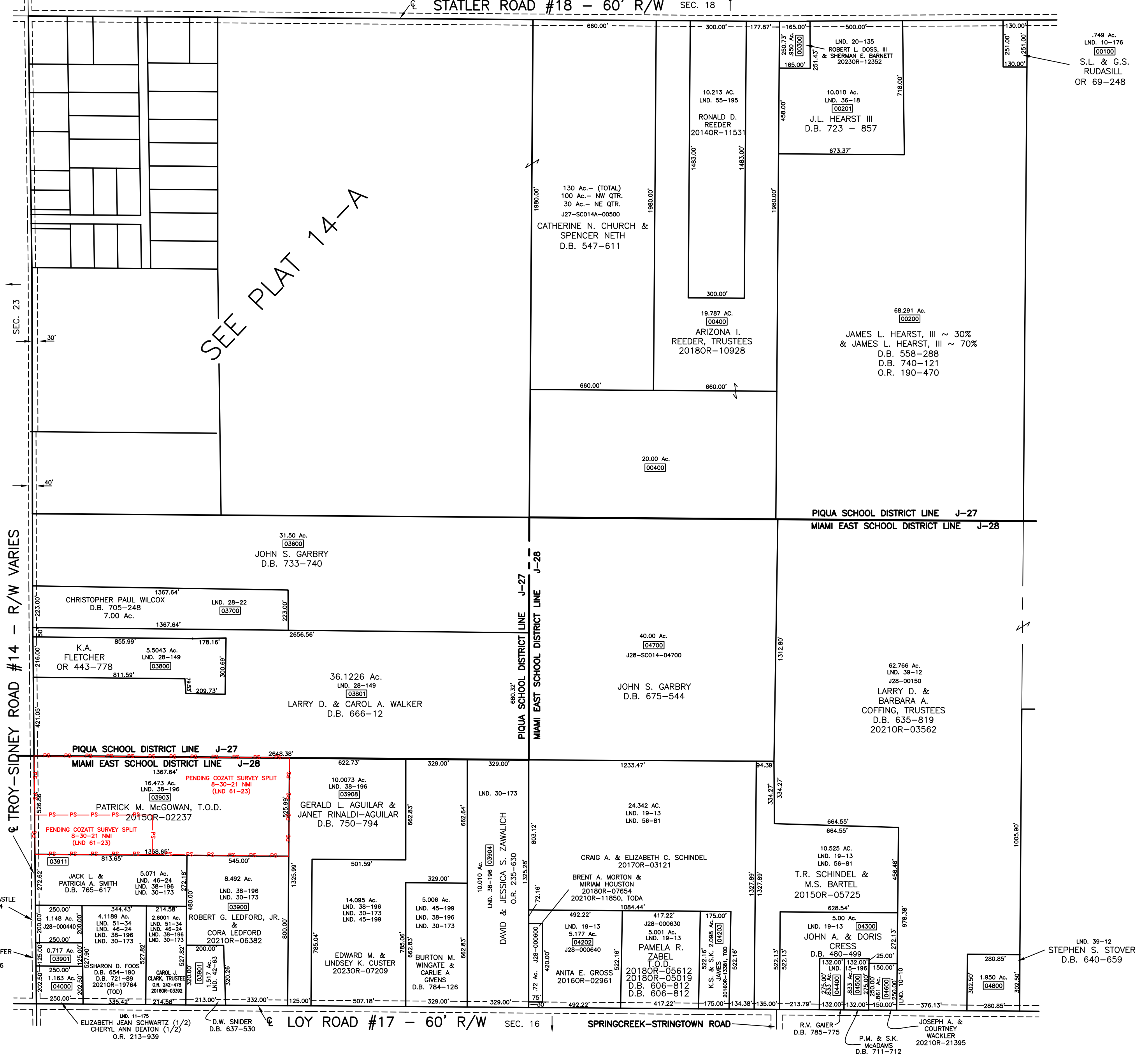


ABBREVIATION LEGEND

2014OR-07759 = RECORDER'S DOCUMENT NUMBER
 OR 406-509 = OFFICAL RECORD 406, PAGE 509
 D.B. 613-172 = DEED BOOK 613, PAGE 172
 REC. 15-72 = RECORDER'S PLAT BOOK 15, PAGE 72
 LND. 33-15 = LAND SURVEY VOLUME 33, PAGE 15
 LOT 19-12 = LOT SURVEY VOLUME 19, PAGE 12
 R.R. 8-29 = ROAD RECORD VOLUME 8, PAGE 29
 R/W = RIGHT OF WAY
 C = CENTERLINE
 AC. = ACRES
 TWP. = TOWNSHIP
 TR. = TRACT
 ② = LOT CREATED BY RECORDER'S PLAT

SURVEY INDEX

NORTHWEST QUARTER		
LND. 3-101	REC. 21-32	RD. REC. 9-5
LND. 10-146		
LND. 11-43		
LND. 19-70		
LND. 35-161		
REC. 7-30		
REC. 7-62		
REC. 7-104		
SEE PLAT 14-A		
NORTHEAST QUARTER		
LND. 10-176		
LND. 20-135		
LND. 36-18		
LND. 55-195		
SOUTHWEST QUARTER		
LND. 11-175		
LND. 28-22		
LND. 28-149		
LND. 38-196		
LND. 30-173		
LND. 38-175		
LND. 42-63		
LND. 45-199		
LND. 46-24		
LND. 51-34		
SOUTHEAST QUARTER		
LND. 10-10		
LND. 15-196		
LND. 19-13		
LND. 39-12		
LND. 56-81		



PREPARED BY: MIAMI COUNTY ENGINEER'S MAP DEPARTMENT
 PAUL P. HUELSKAMP, COUNTY ENGINEER
 DATE: AUGUST 1993
 REVISED: November 9, 2023 JBORGART