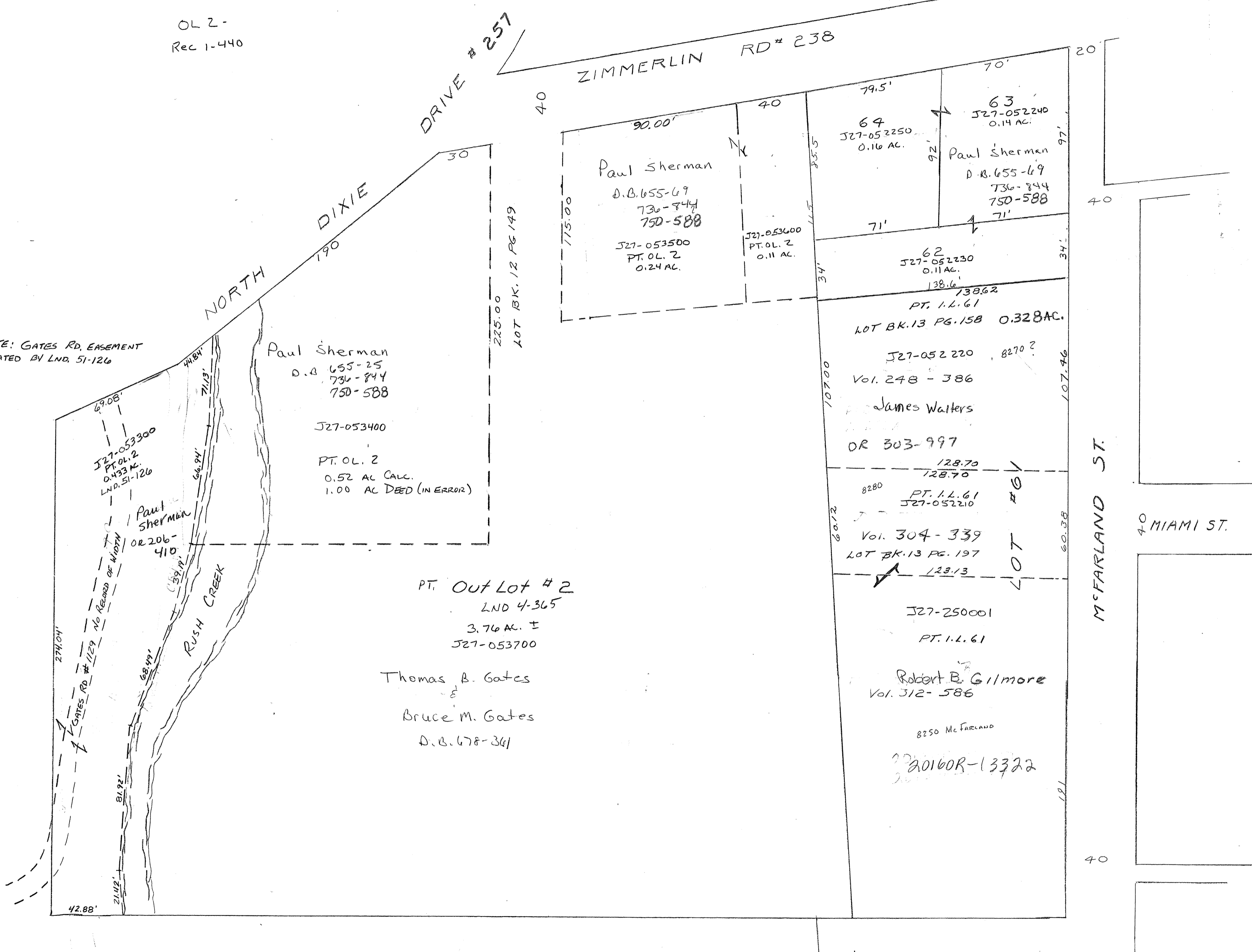


LOTS 61-64
REC. 1-226

OL 2-
Rec 1-440

NOTE: GATES RD, EASEMENT
LOCATED BY LND. 51-126



Paul Sherman
D.B. 655-25
736-844
750-588

J27-053400

PT. OL. 2
0.52 AC CALC.
1.00 AC DEED (IN ERROR)

PT. OUT LOT # 2
LND 4-365
3.76 AC. ±
J27-053700

Thomas B. Gates
Bruce M. Gates
D.B. 678-341

Paul Sherman
D.B. 655-69
736-844
750-588

J27-053500
PT. OL. 2
0.24 AC.

J27-053600
PT. OL. 2
0.11 AC.

64
J27-052250
0.16 AC.

63
J27-052240
0.14 AC.

Paul Sherman
D.B. 655-69
736-844
750-588

62
J27-052230
0.11 AC.

PT. I.L. 61
LOT BK. 13 PG. 158 0.328 AC.

J27-052220
Vol. 248 - 386

James Walters

OR 303-997

PT. I.L. 61
J27-052210

Vol. 304-339
LOT BK. 13 PG. 197

J27-250001
PT. I.L. 61

Robert B. Gilmore
Vol. 312-586

8250 McFarland
2016OR-13322