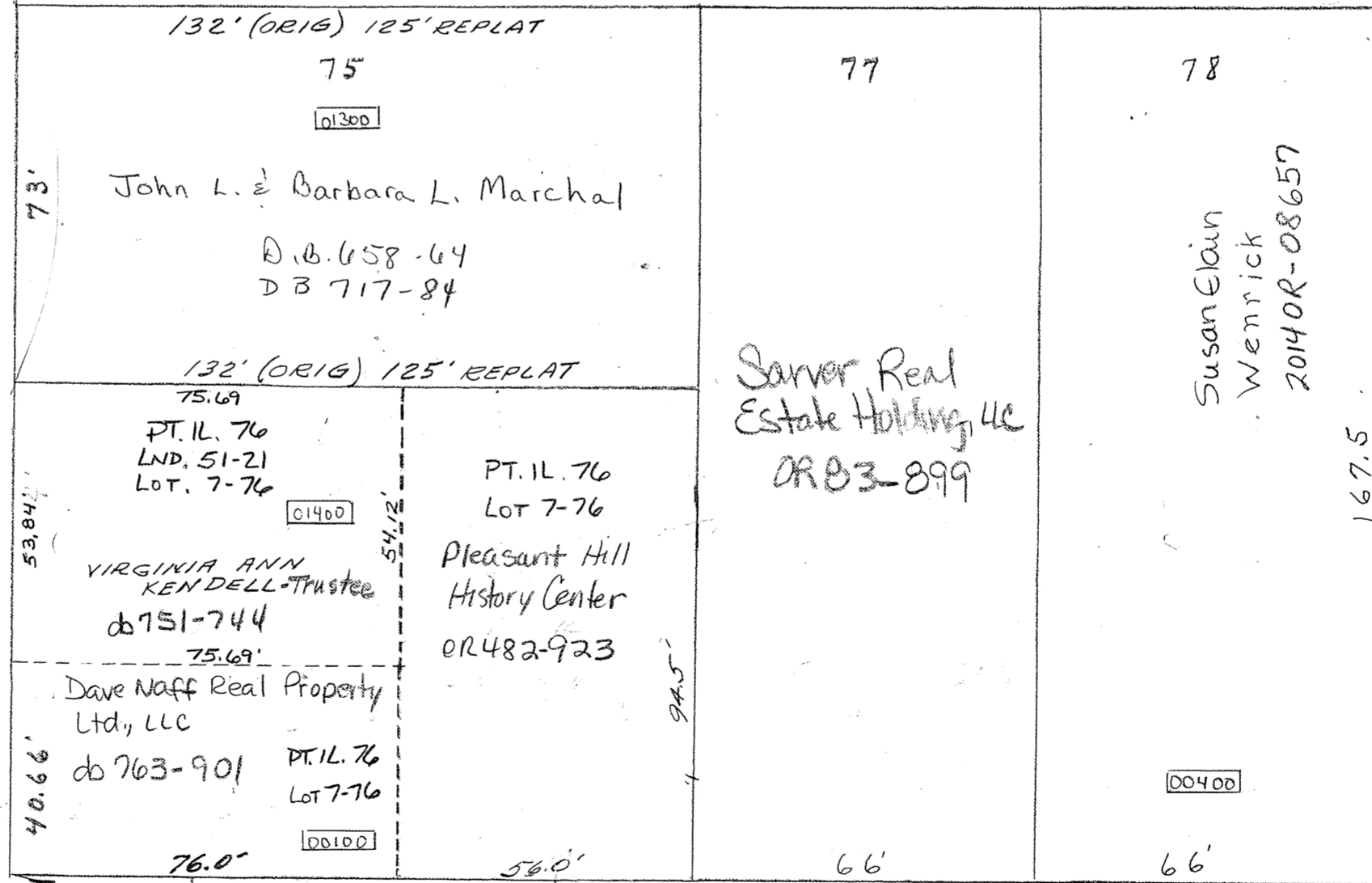
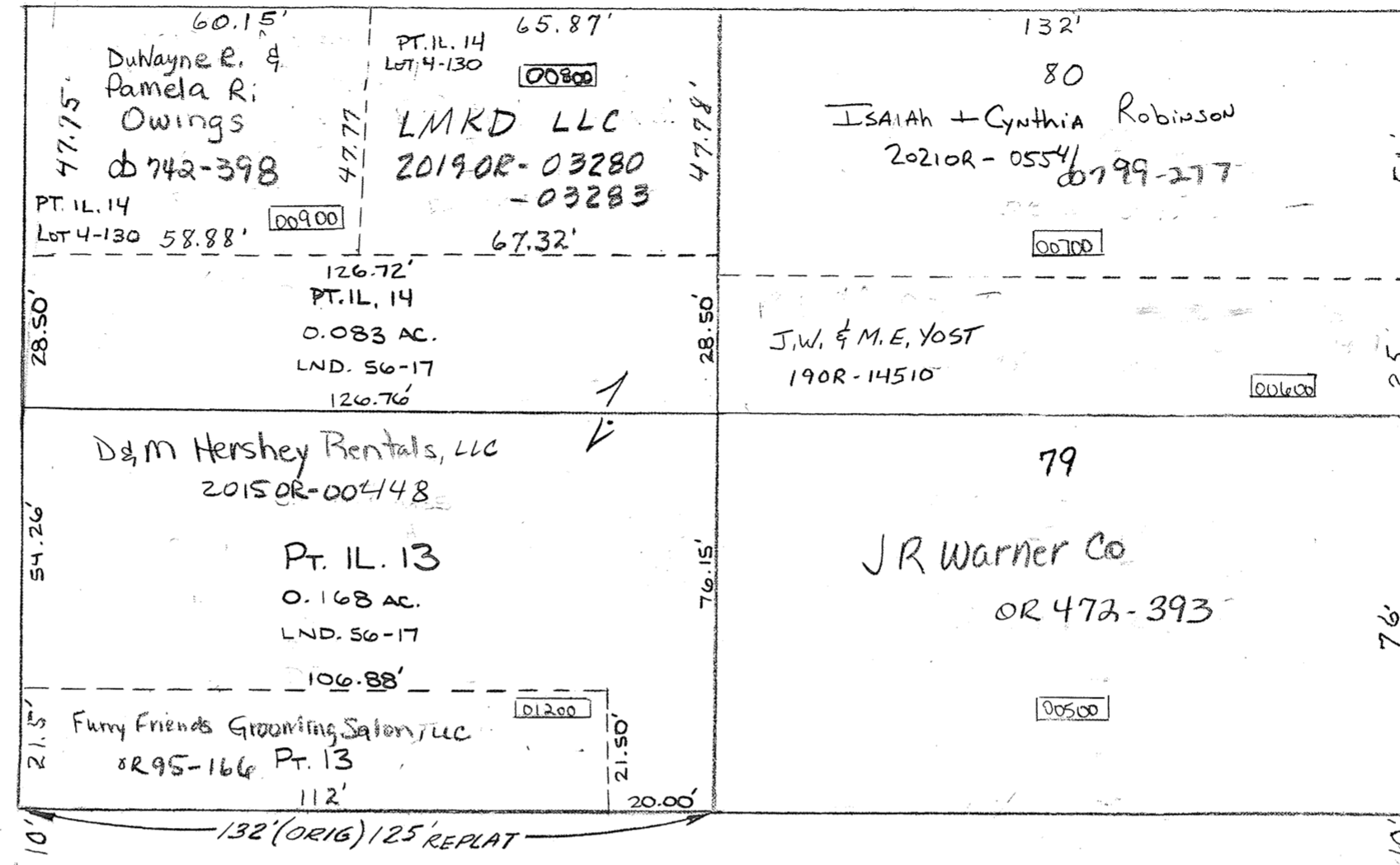


REC. BK. 1-385

HIGH STREET 51.5' R/W

MAIN STREET 80'
ORIGINAL PLAT SHOWS MAIN ST. 66' WIDE - LOTS FACING
MAIN ST ARE 7' SHORTER, BY ORDER OF COUNCIL 1980,
FROM MONUMENT ST. NORTH. PLAT BK. 1 PG. 436



NOW MONUMENT STREET RESOLUTION NO. 1969-9

CROSS STREET 80'