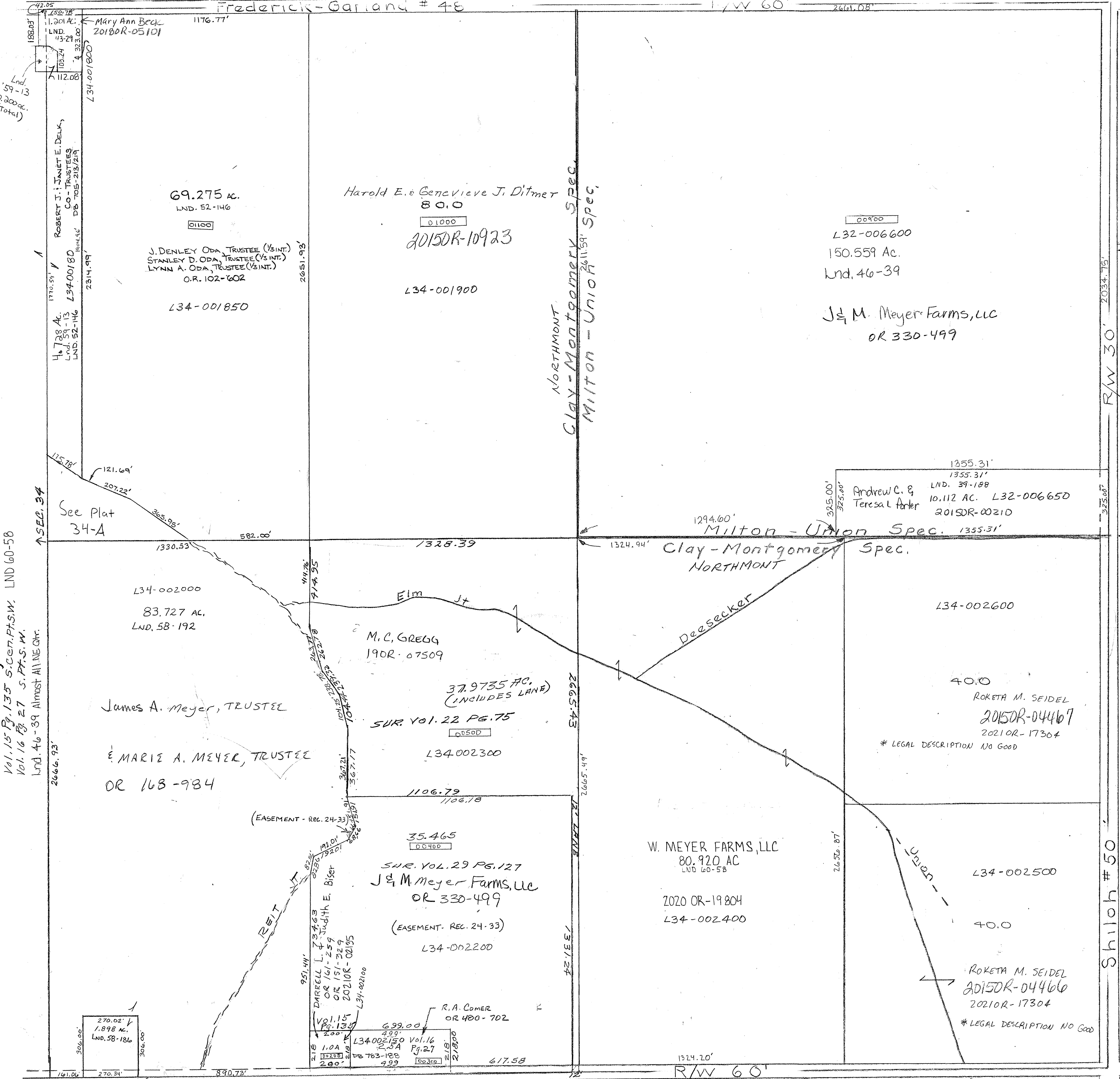


Frederick-Garland # 48



PARCEL NUMBER  
L34-001900

SCALE - 1" = 330'

No Surveys  
Vol. 15 Pg. 135 S. 1/4 Sec. 7, T. 7S, R. 4W.  
Vol. 16 Pg. 27 S. 1/4 Sec. 7, T. 7S, R. 4W.  
Lnd. 46-39 Almost All NE 1/4

See Plat 34-A

2666.93'

270.02'  
1.898 AC.  
LND. 58-186

69.275 AC.  
LND. 52-146

J. DENLEY ODA, TRUSTEE (1/3 INT.)  
STANLEY D. ODA, TRUSTEE (1/3 INT.)  
LYNN A. ODA, TRUSTEE (1/3 INT.)  
O.R. 102-602

L34-001850

Harold E. & Genevieve J. Dittmer  
80.0

2015DR-10923

L34-001900

L32-006600  
150.559 AC.  
Lnd. 46-39

J & M Meyer Farms, LLC  
OR 330-499

L34-002000  
83.727 AC.  
LND. 58-192

James A. Meyer, TRUSTEE

E. MARIE A. MEYER, TRUSTEE  
OR 163-984

M. C. GREGG  
190R-07509

37.9735 AC.  
(INCLUDES LANE)

SUR. VOL. 22 PG. 75

L34-002300

35.465  
D. 0400

SUR. VOL. 29 PG. 127  
J & M Meyer Farms, LLC  
OR 330-499

(EASEMENT - REC. 24-33)

L34-002200

W. MEYER FARMS, LLC  
80.920 AC  
LND 60-58

2020 OR-19804  
L34-002400

Andrew C. & Teresa L Porter  
10.112 AC. L32-006650  
2015DR-00210

Milton - Union Spec.  
Clay - Montgomery Spec.  
NORTHMONT

L34-002600

40.0  
ROKETA M. SEIDEL  
2015DR-04467  
2021OR-17304  
\* LEGAL DESCRIPTION NO GOOD

L34-002500

40.0

ROKETA M. SEIDEL  
2015DR-04466  
2021OR-17304  
\* LEGAL DESCRIPTION NO GOOD