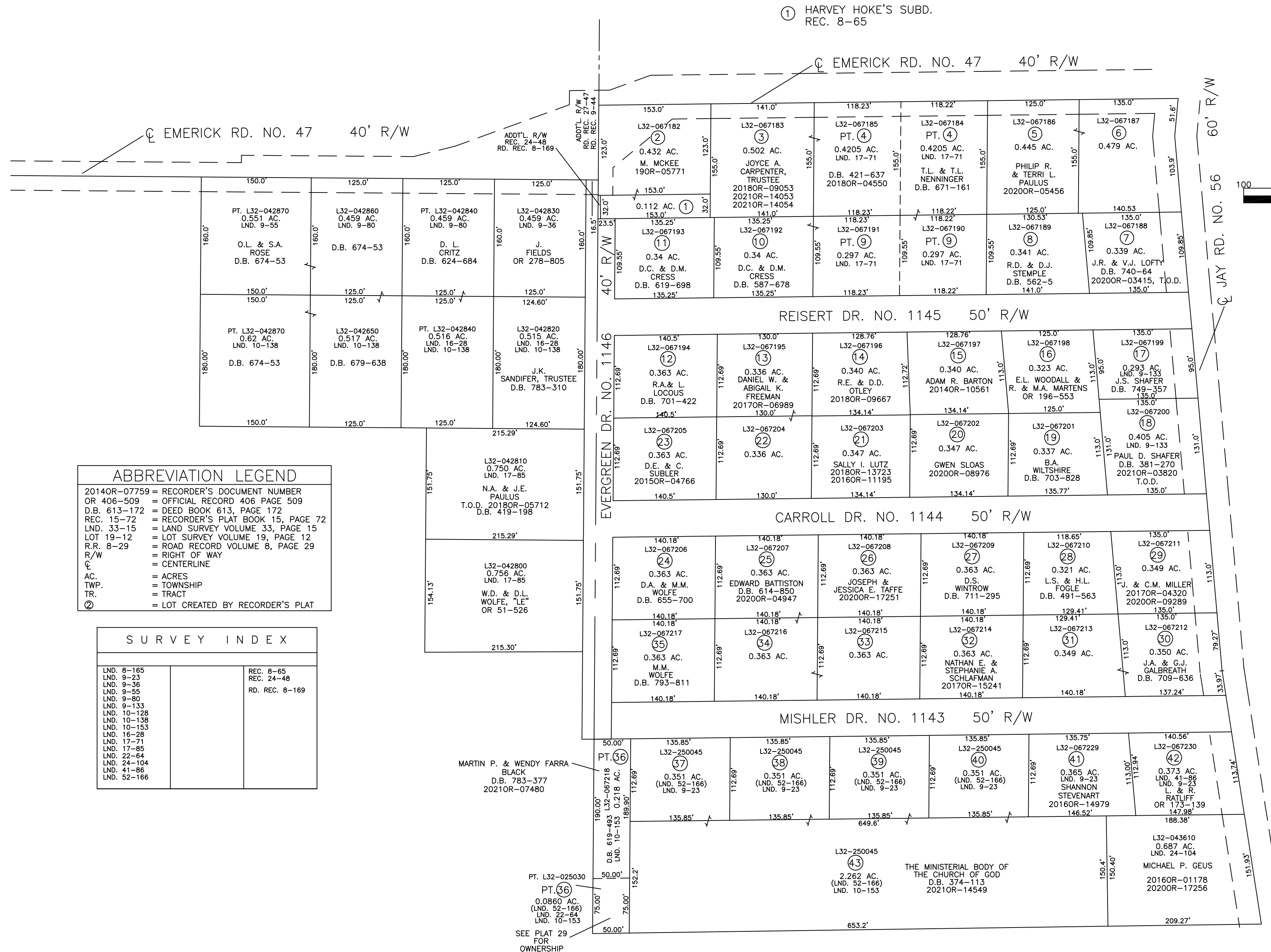


UNION TOWNSHIP
MIAMI COUNTY, OHIO

SECTION 29 TOWN 6 RANGE 5
PART NORTHEAST & NORTHWEST QUARTERS

PLAT 29 A



ABBREVIATION LEGEND

2014OR-07759 = RECORDER'S DOCUMENT NUMBER
 OR 406-509 = OFFICIAL RECORD 406 PAGE 509
 D.B. 613-172 = DEED BOOK 613, PAGE 172
 REC. 15-72 = RECORDER'S PLAT BOOK 15, PAGE 72
 LND. 33-15 = LAND SURVEY VOLUME 33, PAGE 15
 LOT 19-12 = LOT SURVEY VOLUME 19, PAGE 12
 R.R. 8-29 = ROAD RECORD VOLUME 8, PAGE 29
 R/W = RIGHT OF WAY
 C = CENTERLINE
 AC. = ACRES
 TWP. = TOWNSHIP
 TR. = TRACT
 (2) = LOT CREATED BY RECORDER'S PLAT

SURVEY INDEX

LND. 8-165	REC. 8-65
LND. 9-23	REC. 24-48
LND. 9-36	
LND. 9-55	RD. REC. 8-169
LND. 9-80	
LND. 9-133	
LND. 10-128	
LND. 10-138	
LND. 10-153	
LND. 16-28	
LND. 17-71	
LND. 17-85	
LND. 22-64	
LND. 24-104	
LND. 41-86	
LND. 52-166	

PREPARED BY: MIAMI COUNTY ENGINEER'S MAP DEPARTMENT
 PAUL P. HUELSKAMP, P.E., P.S., COUNTY ENGINEER
 DATE: SEPTEMBER 12, 2013
 REVISED: August 23, 2021 CSHOUP