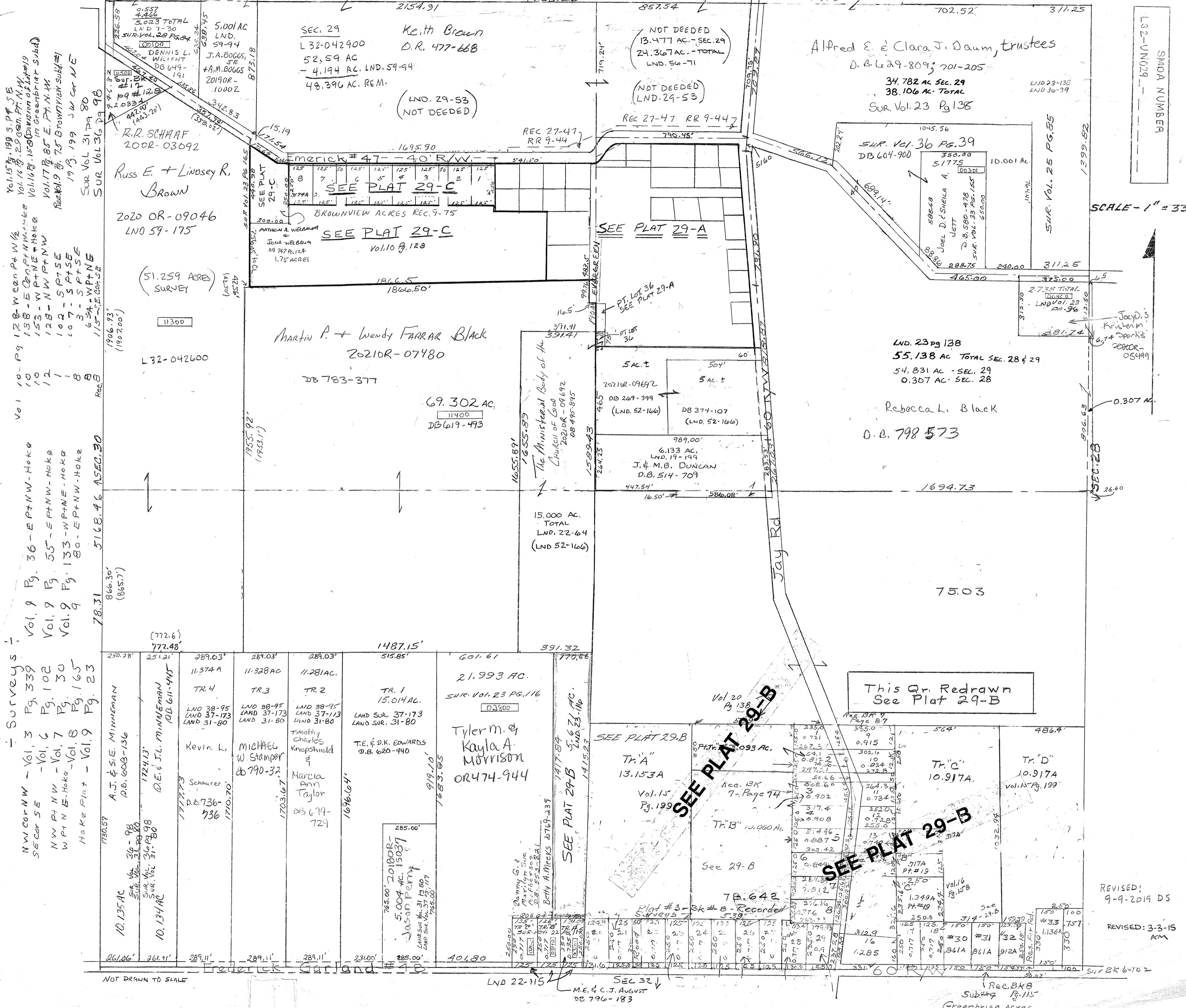


SMDA NUMBER
L32-JUN029

SCALE - 1" = 330'



Vol. 15 Pg. 199 5.14 5 E
 Vol. 16 Pg. 29 0.21 Pt. N.W.
 Vol. 16 Pg. 158 Division of Lot #19 in Greenbriar Subd.
 Vol. 17 Pg. 85 E. Pt. N.W.
 Rec. 619 Pg. 75 Greenbriar Subd.
 19 Pg. 199 SW Cor. NE
 SUR. Vol. 31 Pg. 80
 SUR. Vol. 36 Pg. 98
 Vol. 10 Pg. 128 W. Cor. Pt. W. 1/2
 138 - E. Cor. Pt. N.W. 1/4
 153 - W. Pt. NE - Hoke
 128 - NW Pt. NW
 102 - S. Pt. SE
 107 - S. Pt. SE
 8 - S. Pt. SE
 634 - W. Pt. NE
 115 - S. E. Cor. SE
 Vol. 9 Pg. 36 - E. Pt. NW - Hoke
 Vol. 9 Pg. 55 - E. Pt. NW - Hoke
 Vol. 9 Pg. 133 - W. Pt. NE - Hoke
 80 - E. Pt. NW - Hoke
 78.31 5168.46 15 SEC. 30
 866.30' (865.7)
 (772.6)
 772.48'
 Vol. 15 Pg. 339
 Vol. 6 Pg. 102
 Vol. 7 Pg. 30
 Vol. 8 Pg. 165
 Vol. 9 Pg. 23
 N.W. Cor. NW - Vol. 3
 S.E. Cor. SE
 N.W. Pt. NW - Vol. 6
 W. Pt. NE - Hoke - Vol. 7
 Hoke Plat - Vol. 8
 Vol. 9 Pg. 23
 A.J. & SIE. MINNEMAN
 DB. 608-136
 D.E. & J.L. MINNEMAN
 DB. 611-445
 Kevin L. Schaurer
 DB. 736-936
 MICHAEL W. STAMPER
 DB 790-32
 Timothy Charles Knepshield &
 Marcia Ann Taylor
 DB 679-729
 T.E. & D.K. EDWARDS
 D.B. 620-440
 Danny G. + Marilyn Sue
 Mattingly, DB. 513-821
 Betty Amicks, DB. 619-237

NOT DRAWN TO SCALE

REC. BK 8
SUB # 4
13.115
Greenbriar Acres

REVISED!
9-9-2019, DS
REVISED: 3-3-15
AM