

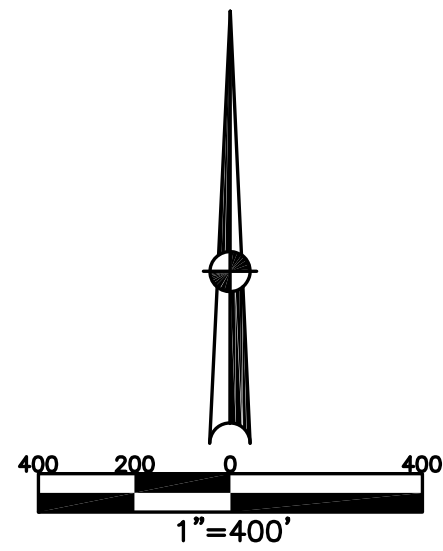
UNION TWP.
MIAMI COUNTY, OHIO

SECTION 19 TOWN 6 RANGE 5

PARCEL NUMBER
L32-_____

PLAT 19

SEE PLAT 18 FOR PARCEL INFORMATION
REC. 24-12
RD. REC. 8-170

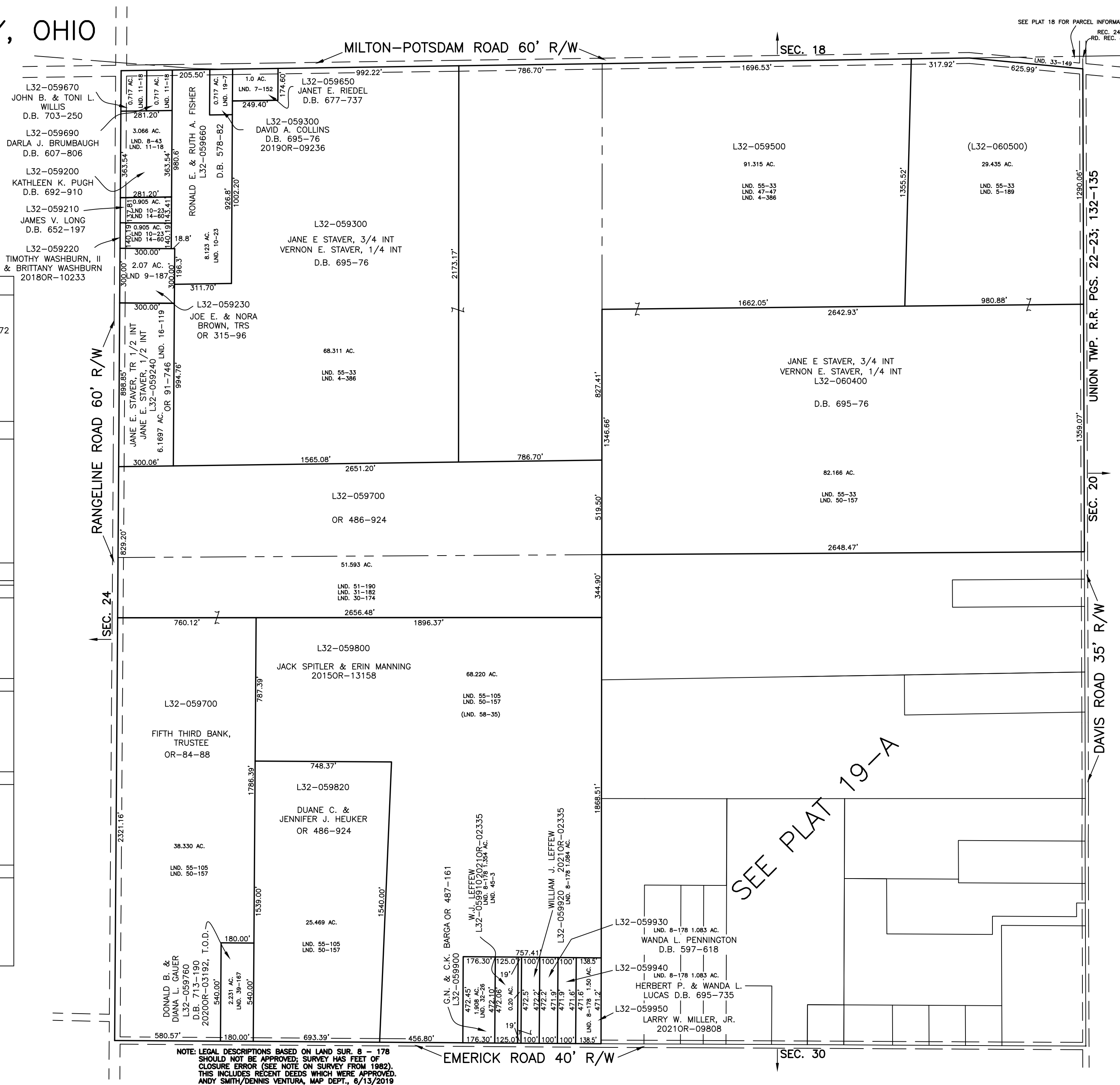


ABBREVIATION LEGEND	
2014OR-07759	= RECORDER'S DOCUMENT NUMBER
OR 406-509	= OFFICIAL RECORD 406 PAGE 509
D.B. 613-172	= DEED BOOK 613, PAGE 172
REC. 15-72	= RECORDER'S PLAT BOOK 15, PAGE 72
LND. 33-15	= LAND SURVEY VOLUME 33, PAGE 15
LOT 19-12	= LOT SURVEY VOLUME 19, PAGE 12
R.R. 8-29	= ROAD RECORD VOLUME 8, PAGE 29
R/W	= RIGHT OF WAY
CL	= CENTERLINE
AC.	= ACRES
TWP.	= TOWNSHIP
TR.	= TRACT
Ⓞ	= LOT CREATED BY RECORDER'S PLAT

LINE LEGEND	
	Blow-up Boundary
	Property Line
	Lot Split Line
	Section Line
	Centerline
	Right-of-Way Line
	Corporation Line

SURVEY INDEX	
NORTHEAST QUARTER	
LND. 4-386	
LND. 5-189	
LND. 47-47	
LND. 55-33	
SOUTHEAST QUARTER	
SOUTHWEST QUARTER	
LND. 8-178	
LND. 30-174	
LND. 31-182	
LND. 32-26	
LND. 39-167	
LND. 45-3	
LND. 50-157	
LND. 51-190	
LND. 55-105	
LND. 58-35	
NORTHWEST QUARTER	
LND. 4-386	LND. 31-182
LND. 7-152	LND. 51-190
LND. 8-43	LND. 55-33
LND. 9-187	
LND. 10-23	
LND. 11-18	
LND. 14-60	
LND. 16-119	
LND. 19-7	
LND. 30-174	

PREPARED BY: MIAMI COUNTY ENGINEER'S MAP DEPARTMENT
PAUL P. HUELSKAMP, P.E., P.S., COUNTY ENGINEER
DATE: APRIL 2, 2014 MB
REVISED: June 7, 2021 APALMER



NOTE: LEGAL DESCRIPTIONS BASED ON LAND SUR. 8-178
SHOULD NOT BE APPROVED; SURVEY HAS FEET OF
CLOSURE ERROR (SEE NOTE ON SURVEY FROM 1882).
THIS INCLUDES RECENT DEEDS WHICH WERE APPROVED.
ANDY SMITH/DENNIS VENTURA, MAP DEPT., 6/13/2019

SEE PLAT 19-A