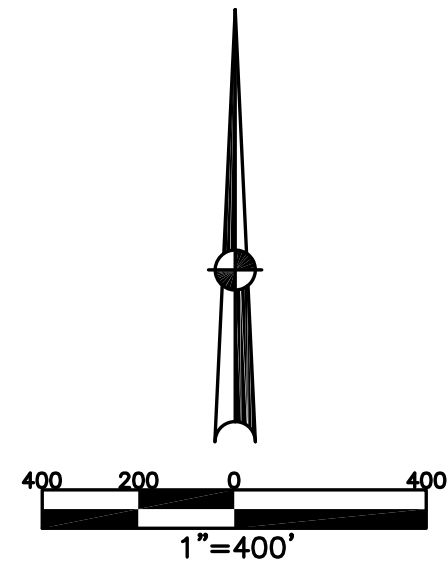


UNION TOWNSHIP  
MIAMI COUNTY, OHIO

SECTION 15 TOWN 6 RANGE 5

PARCEL NUMBER  
L32-\_\_\_\_\_

PLAT 15-A



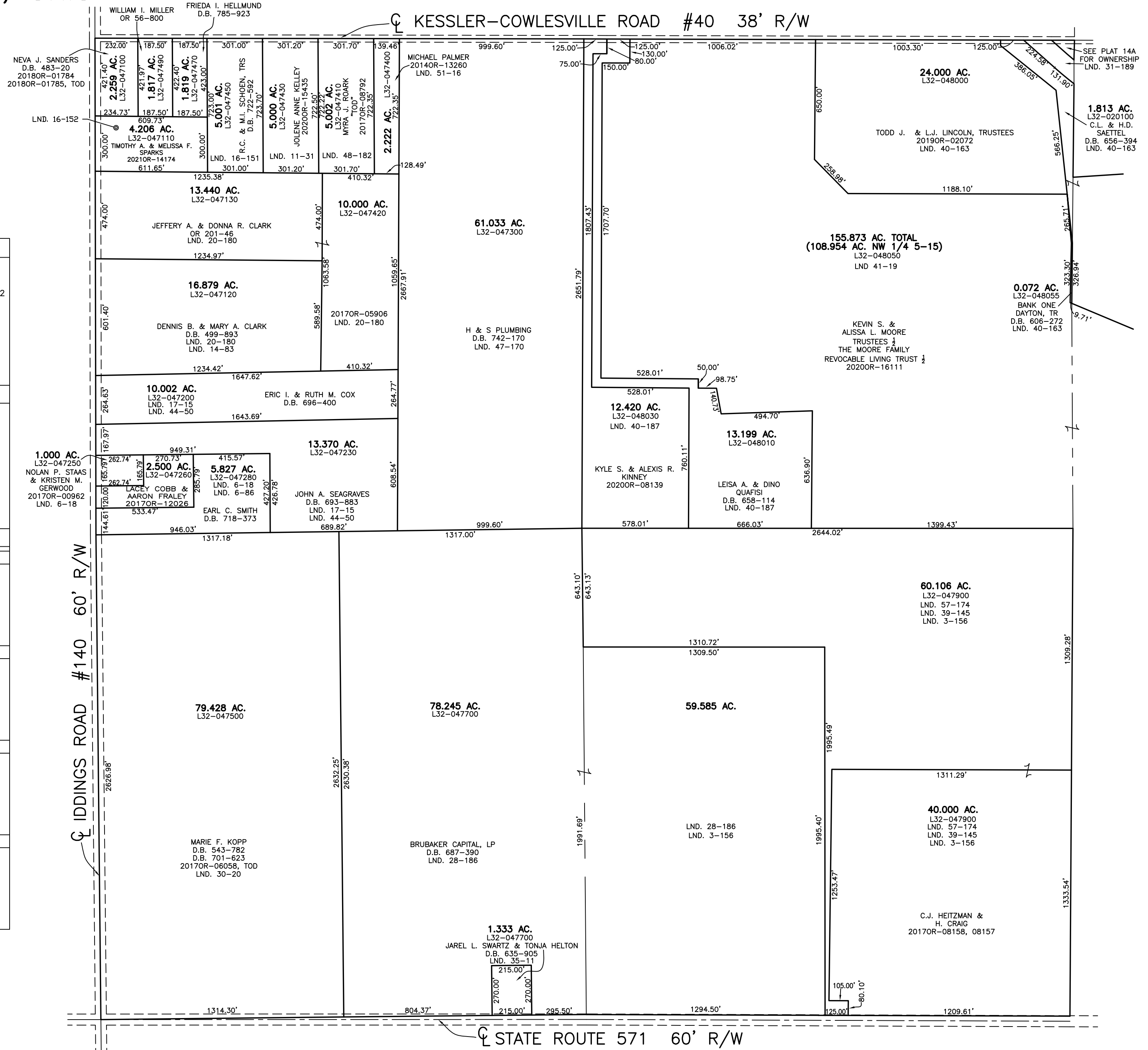
ABBREVIATION LEGEND	
2014OR-07759	= RECORDER'S DOCUMENT NUMBER
OR 257-619	= OFFICIAL RECORD 257 PAGE 619
D.B. 613-172	= DEED BOOK 613, PAGE 172
REC. 15-72	= RECORDER'S PLAT BOOK 15, PAGE 72
LND. 33-15	= LAND SURVEY VOLUME 33, PAGE 15
LOT 19-12	= LOT SURVEY VOLUME 19, PAGE 12
R.R. 8-29	= ROAD RECORD VOLUME 8, PAGE 29
R/W	= RIGHT OF WAY
CL	= CENTERLINE
AC.	= ACRES
TWP.	= TOWNSHIP
TR.	= TRACT
②	= LOT CREATED BY RECORDER'S PLAT

LINE LEGEND	
	Blow-up Boundary
	Property Line
	Lot Split Line
	Section Line
	Centerline
	Right-of-Way Line
	Corporation Line

SURVEY INDEX		
NORTHEAST QUARTER		
LND. 31-189	REC. 13-54	
LND. 40-163	REC. 13-54A	
LND. 40-187	REC. 13-55	
LND. 41-119	REC. 13-56	
SOUTHEAST QUARTER		
LND. 3-156		
LND. 28-186		
LND. 39-145		
LND. 57-174		
SOUTHWEST QUARTER		
LND. 28-186		
LND. 30-20		
LND. 35-11		
NORTHWEST QUARTER		
LND. 6-18	LND. 44-50	REC. 13-54
LND. 6-86	LND. 47-170	REC. 13-54A
LND. 11-31	LND. 48-182	REC. 13-55
LND. 14-83	LND. 51-16	REC. 13-56
LND. 16-151		
LND. 16-152		
LND. 17-15		
LND. 20-180		



PREPARED BY: MIAMI COUNTY ENGINEER'S MAP DEPARTMENT  
PAUL P. HUELSKAMP, P.E., P.S., COUNTY ENGINEER  
DATE: SEPTEMBER 22, 2016 CH  
REVISED: August 17, 2021 APALMER