

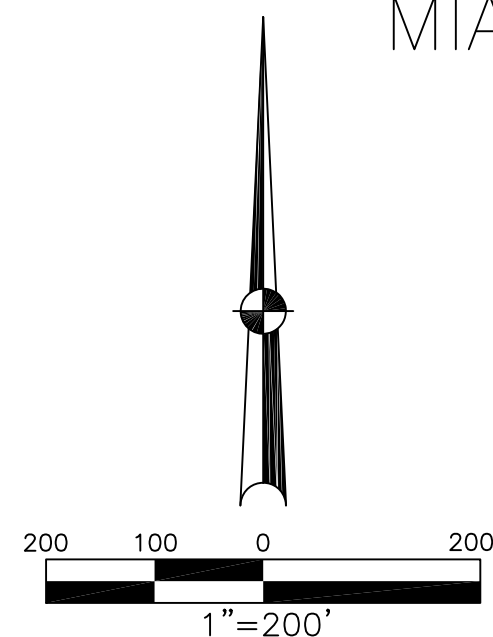
UNION TOWNSHIP
MIAMI COUNTY, OHIO

SECTION 1 TOWN 7 RANGE 4
SOUTHEAST QUARTER

PARCEL NUMBER
L32-_____
L33-_____

PLAT 1-A

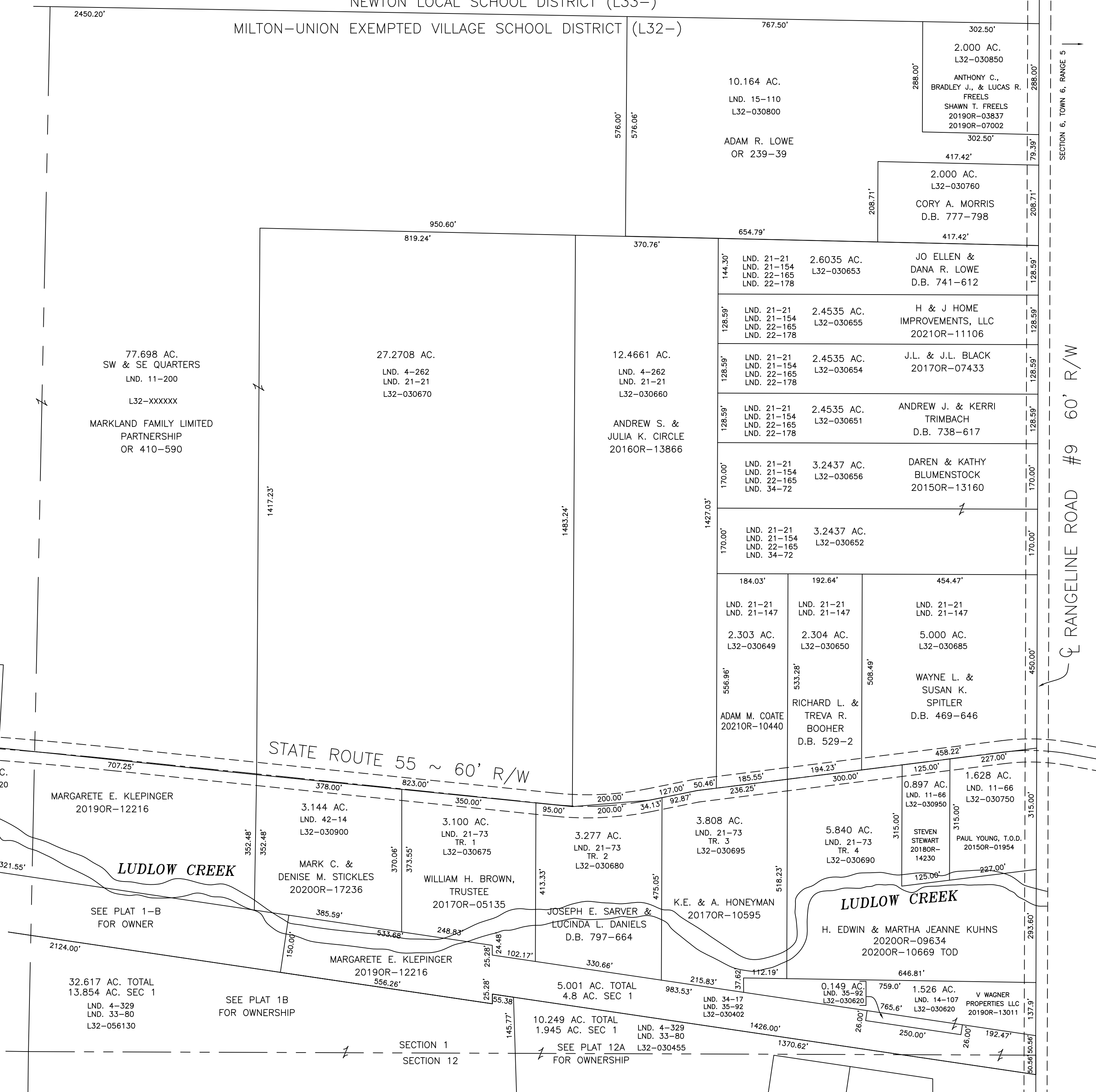
NEWTON LOCAL SCHOOL DISTRICT (L33-)



ABBREVIATION LEGEND		
2014OR-07759	=	RECORDER'S DOCUMENT NUMBER
OR 406-509	=	OFFICIAL RECORD 406 PAGE 509
D.B. 613-172	=	DEED BOOK 613, PAGE 172
REC. 15-72	=	RECORDER'S PLAT BOOK 15, PAGE 72
LND. 33-15	=	LAND SURVEY VOLUME 33, PAGE 15
LOT 19-12	=	LOT SURVEY VOLUME 19, PAGE 12
R.R. 8-29	=	ROAD RECORD VOLUME 8, PAGE 29
R/W	=	RIGHT OF WAY
CL	=	CENTERLINE
AC.	=	ACRES
TWP.	=	TOWNSHIP
TR.	=	TRACT
IL	=	INLOT

LINE LEGEND	
	Blow-up Boundary
	Property Line
	Lot Split Line
	Section Line
	Centerline
	Right-of-Way Line
	Corporation Line

SURVEY INDEX		
LND. 4-329	LND. 24-197	LND. 54-152
LND. 11-200	LND. 25-147	
LND. 14-86	LND. 25-162	
LND. 14-133	LND. 26-144	
LND. 19-105	LND. 27-114	
LND. 19-158	LND. 30-25	
LND. 20-107	LND. 50-185	



PREPARED BY: MIAMI COUNTY ENGINEER'S MAP DEPARTMENT
PAUL P. HUELSKAMP, P.E., P.S., COUNTY ENGINEER
DATE: MARCH 20, 2015 DS
REVISED: June 25, 2021 APALMER

SECTION 1
SECTION 12
SEE PLAT 12A FOR OWNERSHIP

SECTION 6, TOWN 6, RANGE 5
RANGELINE ROAD #9 60' R/W