

WASHINGTON TWP.

MIAMI COUNTY, OHIO

PLAT 32-A

Section 36, Town 9, Range 5

S.E. Quarter

SCALE: 1" = 200'

PARCEL NUMBER

M40 - _____

Douglas L. & Connie M.
Alley
da 746-290
30.000 AC.
LND. 44-13

SURVEYS

- SUR. VOL. 2, PG. 210
- SUR. VOL. 2, PG. 212
- SUR. VOL. 5, PG. 9
- SUR. VOL. 5, PG. 13
- SUR. VOL. 7, PG. 114
- SUR. VOL. 8, PG. 124
- SUR. VOL. 9, PG. 18
- SUR. VOL. 10, PG. 121
- SUR. VOL. 12, PG. 90
- SUR. VOL. 13, PG. 65
- SUR. VOL. 20, PG. 32
- SUR. VOL. 35, PG. 133
- " " 41, PG. 33
- LND. 41-161
- " 42-25
- " 42-31
- " 44-13
- LND. 48-171
- REC. BK. 10, PG. 13
- REC. BK. 10, PG. 95
- REC. BK. 7, PG. 48
- REC. BK. 21, PG. 141
- REC. 24-62
- REC. 24-67
- R.D. REC. 9-21

REECE RD. NO. 109 - NO RECORD OF WIDTH

RIGHT-OF-WAY LINE

SUR. VOL. 9, PG. 18

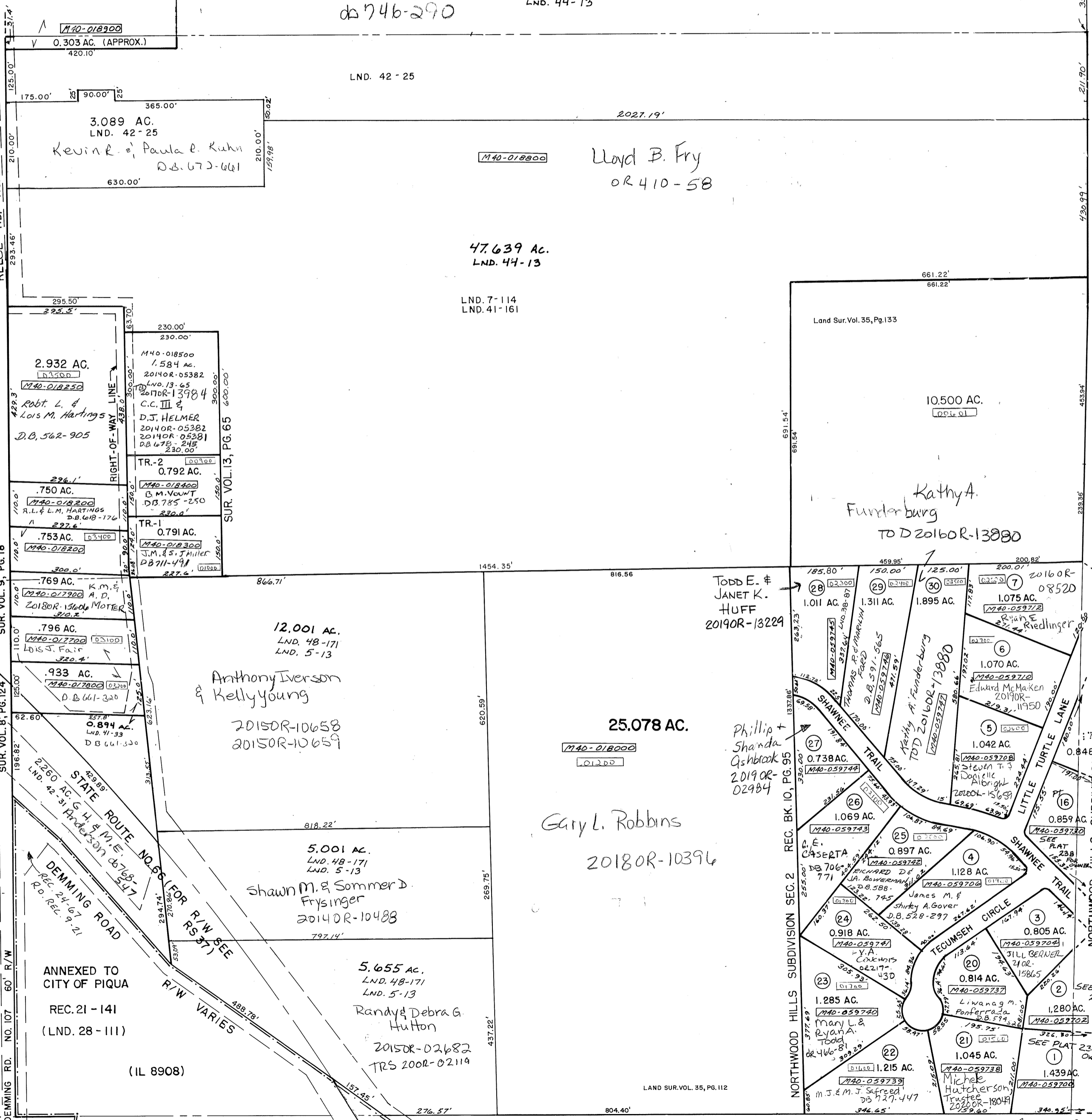
SUR. VOL. 12, PG. 90

SUR. VOL. 8, PG. 124

SUR. VOL. 6, PG. 124

SUR. VOL. 10, PG. 112

SUR. VOL. 13, PG. 65



TODD E. & JANET K. HUFF
20190R-13224

Phillip + Shanda Gshbriak
20190R-02984

* NOTE: 1/2 SEC LINE SHOWN WRONG - SEE REC. PLAT!

NORTHWOOD HILLS SUBDIVISION SEC. 1 REC. BK. 10, PG. 13

SEE PLAT 238 FOR OWNERSHIP

SEE PLAT 238 FOR OWNERSHIP

ANNEXED TO CITY OF PIQUA
REC. 21-141
(LND. 28-111)

(IL 8908)