

WASHINGTON TWP.

MIAMI COUNTY, OHIO

SMDA NUMBER
M40-WA029A-

PLAT 29-A

Section 35, Town 9, Range 5

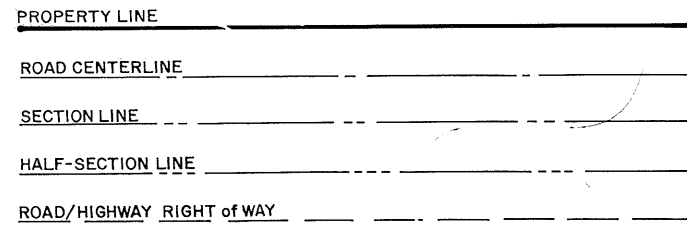
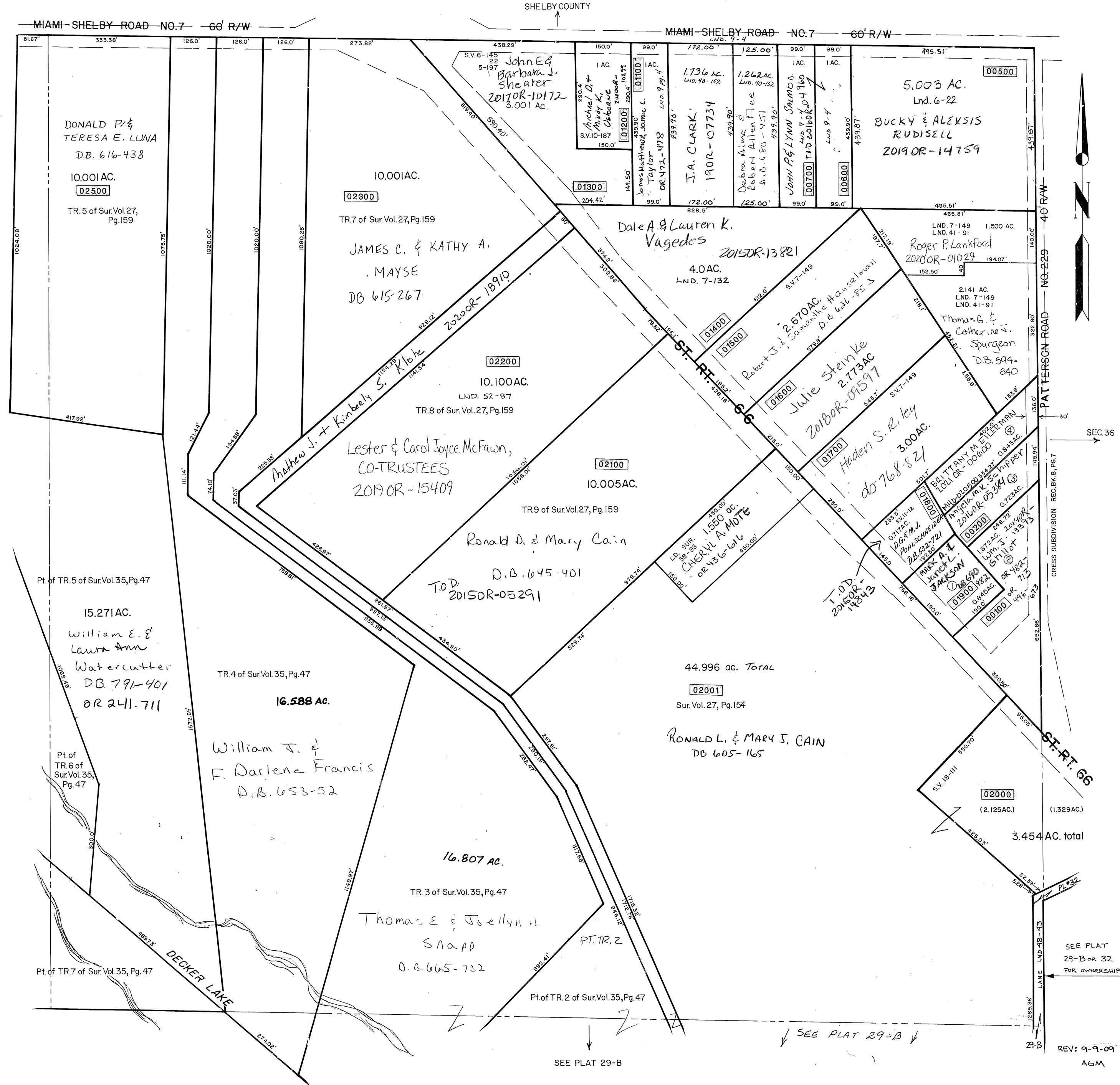
N.E. Quarter SEC. 35

SCALE: 1" = 200'

SURVEYS & RECORD PLATS

- Sur. Vol. 2, Pg. 211
- 5, Pg. 197
- 6, Pg. 22
- 6, Pg. 145
- 6, Pg. 167
- 7, Pg. 132
- 7, Pg. 149
- 9, Pg. 4
- 10, Pg. 187
- 11, Pg. 12
- 27, Pg. 154
- 27, Pg. 159
- 35, Pg. 47
- 38, Pg. 93
- 40, Pg. 152
- 41, Pg. 91
- 48, Pg. 43
- 52, Pg. 87

REC. BK. 8, PG. 7
Cress Subdivision - 4 Lots



SEE PLAT 29-B

SEE PLAT 29-B

SEE PLAT 29-B OR 32 FOR OWNERSHIP

REV: 9-9-09
AGM