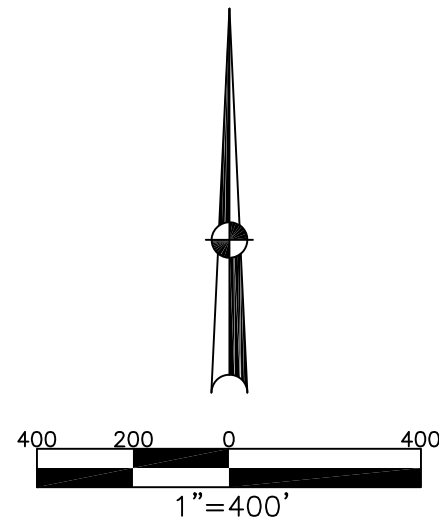


WASHINGTON TWP.  
MIAMI COUNTY, OHIO

SECTION 23 TOWN 8 RANGE 5

PARCEL NUMBER  
M40-\_\_\_\_\_

PLAT 15



ABBREVIATION LEGEND		
20140R-07759	=	RECORDER'S DOCUMENT NUMBER
OR 406-509	=	OFFICIAL RECORD 406 PAGE 509
D.B. 677-326	=	DEED BOOK 677, PAGE 326
REC. 18-87	=	RECORDER'S PLAT BOOK 18, PAGE 87
LND. 56-145	=	LAND SURVEY VOLUME 56, PAGE 145
LOT 24-200	=	LOT SURVEY VOLUME 24, PAGE 200
R.R. 8-18	=	ROAD RECORD VOLUME 8, PAGE 18
R/W	=	RIGHT OF WAY
CL	=	CENTERLINE
AC.	=	ACRES
TWP.	=	TOWNSHIP
TR.	=	TRACT
②	=	LOT CREATED BY RECORDER'S PLAT

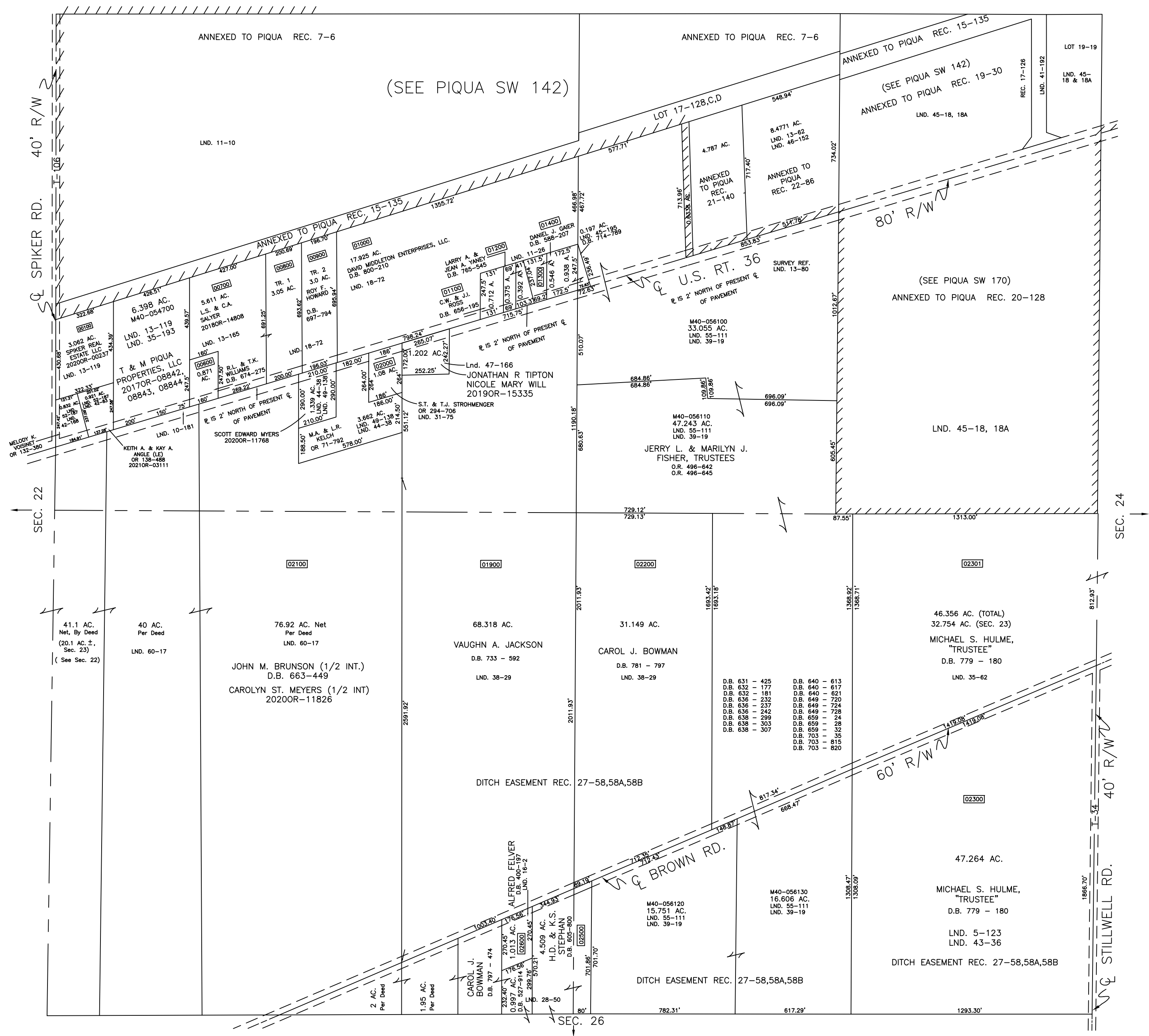
  

LINE LEGEND		
	Blow-up Boundary	
	Property Line	
	Lot Split Line	
	Centerline	
	Section Line	
	Right-of-Way Line	
	Corporation Line	

SURVEY INDEX		
NORTHWEST QUARTER		
LND. 10-181	LND. 42-83	LOT 17-128,C,D
LND. 11-10	LND. 42-168	REC. 7-6
LND. 11-26	LND. 44-38	REC. 15-135,A,B
LND. 13-119	LND. 47-166	
LND. 13-165	LND. 49-138	
LND. 18-72	LND. 52-187	
LND. 28-50		
LND. 31-75		
LND. 35-193		
LND. 37-167		
LND. 38-29		
NORTHEAST QUARTER		
LND. 13-62	LND. 47-166	LOT 17-128,C,D
LND. 13-80	LND. 55-111	LOT 19-19
LND. 13-193		LOT 19-30
LND. 17-107		REC. 7-6
LND. 23-136		REC. 15-135,A,B
LND. 32-34		REC. 17-126
LND. 39-19		REC. 19-30
LND. 41-192		REC. 20-128
LND. 45-18,18A		REC. 21-140
LND. 45-195		
LND. 46-152		
SOUTHWEST QUARTER		
LND. 4-215		REC. 27-58-58B
LND. 16-2		
LND. 28-50		
LND. 37-167		
LND. 38-29		
LND. 43-36		
LND. 60-17		
SOUTHEAST QUARTER		
LND. 5-123		REC. 27-58-58B
LND. 28-50		
LND. 35-62		
LND. 36-119		
LND. 37-167		
LND. 38-29		
LND. 39-19		
LND. 55-111		

PREPARED BY: MIAMI COUNTY ENGINEER'S MAP DEPARTMENT  
PAUL P. HUELSKAMP, COUNTY ENGINEER  
DATE: AUGUST 1992  
REVISED: July 30, 2021 APALMER



(SEE PIQUA SW 142)

(SEE PIQUA SW 170)  
ANNEXED TO PIQUA REC. 20-128

LND. 45-18, 18A

46.356 AC. (TOTAL)  
32.754 AC. (SEC. 23)  
MICHAEL S. HULME,  
"TRUSTEE"  
D.B. 779 - 180  
LND. 35-62

47.264 AC.  
MICHAEL S. HULME,  
"TRUSTEE"  
D.B. 779 - 180  
LND. 5-123  
LND. 43-36  
DITCH EASEMENT REC. 27-58,58A,58B

DITCH EASEMENT REC. 27-58,58A,58B

JOHN M. BRUNSON (1/2 INT.)  
D.B. 663-449  
CAROLYN ST. MEYERS (1/2 INT.)  
2020R-11826

VAUGHN A. JACKSON  
D.B. 733 - 592  
LND. 38-29

CAROL J. BOWMAN  
D.B. 781 - 797  
LND. 38-29

D.B. 631 - 425  
D.B. 632 - 177  
D.B. 633 - 181  
D.B. 634 - 232  
D.B. 635 - 237  
D.B. 636 - 242  
D.B. 637 - 299  
D.B. 638 - 303  
D.B. 638 - 307

D.B. 640 - 613  
D.B. 640 - 617  
D.B. 640 - 621  
D.B. 649 - 720  
D.B. 649 - 724  
D.B. 649 - 728  
D.B. 650 - 24  
D.B. 650 - 38  
D.B. 650 - 32  
D.B. 703 - 35  
D.B. 703 - 815  
D.B. 703 - 820

M40-056130  
16.606 AC.  
LND. 55-111  
LND. 39-19

M40-056100  
33.055 AC.  
LND. 59-111  
LND. 39-19

M40-056110  
47.243 AC.  
LND. 55-111  
LND. 39-19

M40-056120  
15.751 AC.  
LND. 55-111  
LND. 39-19

M40-056130  
16.606 AC.  
LND. 55-111  
LND. 39-19

T & M PIQUA  
PROPERTIES, LLC  
2017OR-08842,  
08843, 08844

R.L. & T.K.  
WILLIAMS  
D.B. 674-275

M.A. & L.R.  
VELCH  
OR 71-192  
578.00'

S.T. & T.J.  
STROHMENGER  
OR 294-706  
LND. 31-75

JONATHAN R. TIPTON  
NICOLE MARY WILL  
2019OR-15335

DAVID MIDDLETON ENTERPRISES, LLC.  
D.B. 800-210

LARRY A. &  
JEAN A. YANEY  
D.B. 765-545

DANIEL J. GAER  
D.B. 888-207

ALFRED FELVER  
D.B. 577-914

H.D. & K.S.  
STEPHAN  
D.B. 605-800

ROY F. HOWARD  
D.B. 697-794

KEITH A. & KAY A.  
ANGLE (LS)  
OR 138-488  
2021OR-03111

SCOTT EDWARD MYERS  
2020R-11768

JERRY L. & MARILYN J.  
FISHER, TRUSTEES  
O.R. 496-642  
O.R. 496-645

DAVID MIDDLETON ENTERPRISES, LLC.  
D.B. 800-210

LARRY A. &  
JEAN A. YANEY  
D.B. 765-545

DANIEL J. GAER  
D.B. 888-207

ALFRED FELVER  
D.B. 577-914

H.D. & K.S.  
STEPHAN  
D.B. 605-800

ROY F. HOWARD  
D.B. 697-794

KEITH A. & KAY A.  
ANGLE (LS)  
OR 138-488  
2021OR-03111

SCOTT EDWARD MYERS  
2020R-11768

JERRY L. & MARILYN J.  
FISHER, TRUSTEES  
O.R. 496-642  
O.R. 496-645

DAVID MIDDLETON ENTERPRISES, LLC.  
D.B. 800-210

LARRY A. &  
JEAN A. YANEY  
D.B. 765-545

DANIEL J. GAER  
D.B. 888-207

ALFRED FELVER  
D.B. 577-914

H.D. & K.S.  
STEPHAN  
D.B. 605-800

ROY F. HOWARD  
D.B. 697-794

KEITH A. & KAY A.  
ANGLE (LS)  
OR 138-488  
2021OR-03111

SCOTT EDWARD MYERS  
2020R-11768

JERRY L. & MARILYN J.  
FISHER, TRUSTEES  
O.R. 496-642  
O.R. 496-645

DAVID MIDDLETON ENTERPRISES, LLC.  
D.B. 800-210

LARRY A. &  
JEAN A. YANEY  
D.B. 765-545

DANIEL J. GAER  
D.B. 888-207

ALFRED FELVER  
D.B. 577-914

H.D. & K.S.  
STEPHAN  
D.B. 605-800

ROY F. HOWARD  
D.B. 697-794

KEITH A. & KAY A.  
ANGLE (LS)  
OR 138-488  
2021OR-03111

SCOTT EDWARD MYERS  
2020R-11768

JERRY L. & MARILYN J.  
FISHER, TRUSTEES  
O.R. 496-642  
O.R. 496-645

DAVID MIDDLETON ENTERPRISES, LLC.  
D.B. 800-210

LARRY A. &  
JEAN A. YANEY  
D.B. 765-545

DANIEL J. GAER  
D.B. 888-207

ALFRED FELVER  
D.B. 577-914

H.D. & K.S.  
STEPHAN  
D.B. 605-800

ROY F. HOWARD  
D.B. 697-794

KEITH A. & KAY A.  
ANGLE (LS)  
OR 138-488  
2021OR-03111

SCOTT EDWARD MYERS  
2020R-11768

JERRY L. & MARILYN J.  
FISHER, TRUSTEES  
O.R. 496-642  
O.R. 496-645

DAVID MIDDLETON ENTERPRISES, LLC.  
D.B. 800-210

LARRY A. &  
JEAN A. YANEY  
D.B. 765-545

DANIEL J. GAER  
D.B. 888-207

ALFRED FELVER  
D.B. 577-914

H.D. & K.S.  
STEPHAN  
D.B. 605-800

ROY F. HOWARD  
D.B. 697-794

KEITH A. & KAY A.  
ANGLE (LS)  
OR 138-488  
2021OR-03111

SCOTT EDWARD MYERS  
2020R-11768

JERRY L. & MARILYN J.  
FISHER, TRUSTEES  
O.R. 496-642  
O.R. 496-645

DAVID MIDDLETON ENTERPRISES, LLC.  
D.B. 800-210

LARRY A. &  
JEAN A. YANEY  
D.B. 765-545

DANIEL J. GAER  
D.B. 888-207

ALFRED FELVER  
D.B. 577-914

H.D. & K.S.  
STEPHAN  
D.B. 605-800

ROY F. HOWARD  
D.B. 697-794

KEITH A. & KAY A.  
ANGLE (LS)  
OR 138-488  
2021OR-03111

SCOTT EDWARD MYERS  
2020R-11768

JERRY L. & MARILYN J.  
FISHER, TRUSTEES  
O.R. 496-642  
O.R. 496-645

DAVID MIDDLETON ENTERPRISES, LLC.  
D.B. 800-210

LARRY A. &  
JEAN A. YANEY  
D.B. 765-545

DANIEL J. GAER  
D.B. 888-207

ALFRED FELVER  
D.B. 577-914

H.D. & K.S.  
STEPHAN  
D.B. 605-800

ROY F. HOWARD  
D.B. 697-794

KEITH A. & KAY A.  
ANGLE (LS)  
OR 138-488  
2021OR-03111

SCOTT EDWARD MYERS  
2020R-11768

JERRY L. & MARILYN J.  
FISHER, TRUSTEES  
O.R. 496-642  
O.R. 496-645

DAVID MIDDLETON ENTERPRISES, LLC.  
D.B. 800-210

LARRY A. &  
JEAN A. YANEY  
D.B. 765-545

DANIEL J. GAER  
D.B. 888-207

ALFRED FELVER  
D.B. 577-914

H.D. & K.S.  
STEPHAN  
D.B. 605-800

ROY F. HOWARD  
D.B. 697-794

KEITH A. & KAY A.  
ANGLE (LS)  
OR 138-488  
2021OR-03111

SCOTT EDWARD MYERS  
2020R-11768

JERRY L. & MARILYN J.  
FISHER, TRUSTEES  
O.R. 496-642  
O.R. 496-645

DAVID MIDDLETON ENTERPRISES, LLC.  
D.B. 800-210

LARRY A. &  
JEAN A. YANEY  
D.B. 765-545

DANIEL J. GAER  
D.B. 888-207

ALFRED FELVER  
D.B. 577-914

H.D. & K.S.  
STEPHAN  
D.B. 605-800

ROY F. HOWARD  
D.B. 697-794

KEITH A. & KAY A.  
ANGLE (LS)  
OR 138-488  
2021OR-03111

SCOTT EDWARD MYERS  
2020R-11768

JERRY L. & MARILYN J.  
FISHER, TRUSTEES  
O.R. 496-642  
O.R. 496-645

DAVID MIDDLETON ENTERPRISES, LLC.  
D.B. 800-210

LARRY A. &  
JEAN A. YANEY  
D.B. 765-545

DANIEL J. GAER  
D.B. 888-207

ALFRED FELVER  
D.B. 577-914

H.D. & K.S.  
STEPHAN  
D.B. 605-800

ROY F. HOWARD  
D.B. 697-794

KEITH A. & KAY A.  
ANGLE (LS)  
OR 138-488  
2021OR-03111

SCOTT EDWARD MYERS  
2020R-11768

JERRY L. & MARILYN J.  
FISHER, TRUSTEES  
O.R. 496-642  
O.R. 496-645

DAVID MIDDLETON ENTERPRISES, LLC.  
D.B. 800-210

LARRY A. &  
JEAN A. YANEY  
D.B. 765-545

DANIEL J. GAER  
D.B. 888-207

ALFRED FELVER  
D.B. 577-914

H.D. & K.S.  
STEPHAN  
D.B. 605-800

ROY F. HOWARD  
D.B. 697-794

KEITH A. & KAY A.  
ANGLE (LS)  
OR 138-488  
2021OR-03111

SCOTT EDWARD MYERS  
2020R-11768

JERRY L. & MARILYN J.  
FISHER, TRUSTEES  
O.R. 496-642  
O.R. 496-645

DAVID MIDDLETON ENTERPRISES, LLC.  
D.B. 800-210

LARRY A. &  
JEAN A. YANEY  
D.B. 765-545

DANIEL J. GAER  
D.B. 888-207

ALFRED FELVER  
D.B. 577-914

H.D. & K.S.  
STEPHAN  
D.B. 605-800

ROY F. HOWARD  
D.B. 697-794

KEITH A. & KAY A.  
ANGLE (LS)  
OR 138-488  
2021OR-03111

SCOTT EDWARD MYERS  
2020R-11768

JERRY L. & MARILYN J.  
FISHER, TRUSTEES  
O.R. 496-642  
O.R.