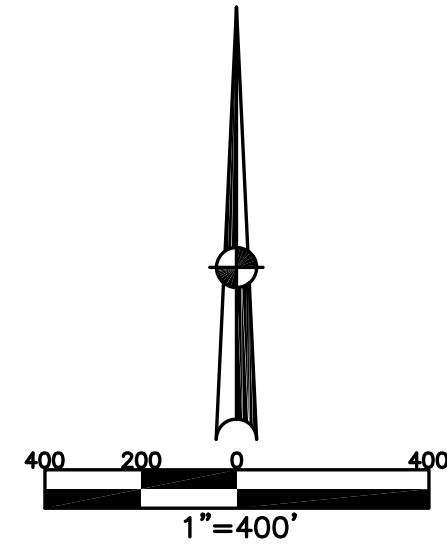


CITY OF PIQUA
MIAMI COUNTY, OHIO

SECTION 13,14 TOWN 1 RANGE 12

PLAT NE 97

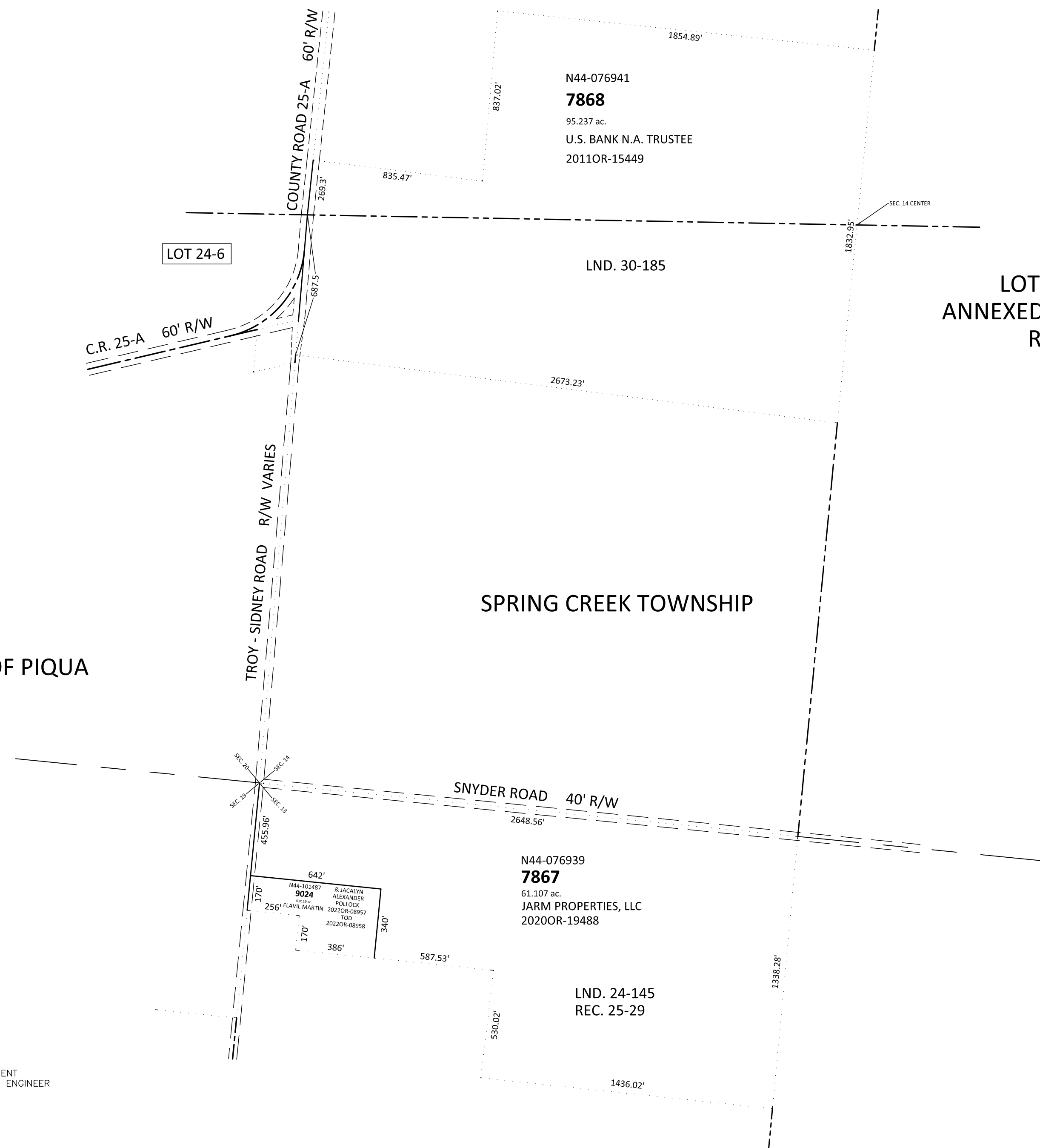


ABBREVIATION LEGEND		
2014OR-00759	=	RECORDER'S DOCUMENT NUMBER
OR 406-309	=	OFFICIAL RECORD 406 PAGE 309
D.B. 613-172	=	DEED BOOK 613, PAGE 172
REC. 15-72	=	RECORDER'S PLAT BOOK 15, PAGE 72
LND. 33-15	=	LAND SURVEY VOLUME 33, PAGE 15
LOT 19-12	=	LOT SURVEY VOLUME 19, PAGE 12
R.R. 8-29	=	ROAD RECORD VOLUME 8, PAGE 29
R/W	=	RIGHT OF WAY
C.	=	CENTERLINE
AC.	=	ACRES
TWP.	=	TOWNSHIP
TR.	=	TRACT
IL	=	INLOT

LINE LEGEND		
	=	Blow-up Boundary
	=	Property Line
	=	Lot Split Line
	=	Section Line
	=	Centerline
	=	Right-of-Way Line
	=	IN CORP. Corporation Line
	=	OUT CORP. Corporation Line

SURVEY INDEX		
REC. 15-113	LOT 24-6	LND. 24-145
REC. 25-29		LND. 30-185

PARCEL NUMBER
N44-_____



LOTS 7825 - 7868
ANNEXED TO CITY OF PIQUA
REC. 15-113

CITY OF PIQUA

SPRING CREEK TOWNSHIP

PREPARED BY: MIAMI COUNTY ENGINEER'S MAP DEPARTMENT
PAUL P. HUELSKAMP, P.E., P.S., COUNTY ENGINEER
DATE: November 12, 2020
REVISED: February 2, 2021 APALMER