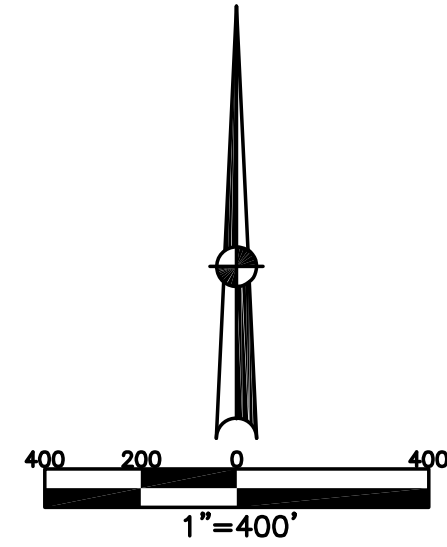


CITY OF PIQUA
MIAMI COUNTY, OHIO

SECTION 25 TOWN 1 RANGE 12

PLAT NE 93



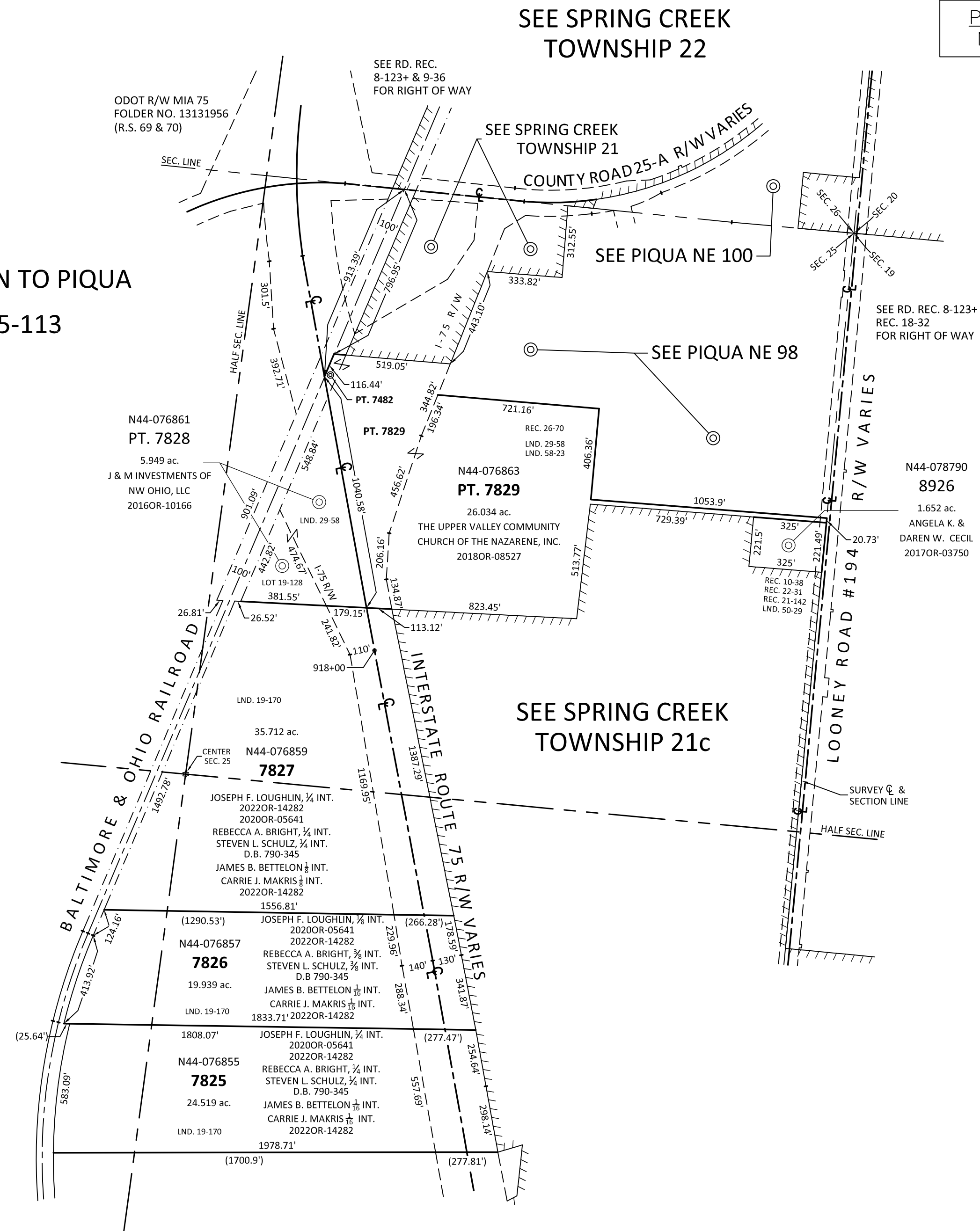
ABBREVIATION LEGEND		
2014OR-00759	=	RECORDER'S DOCUMENT NUMBER
OR 406-509	=	OFFICIAL RECORD 406 PAGE 509
D.B. 613-172	=	DEED BOOK 613, PAGE 172
REC. 15-72	=	RECORDER'S PLAT BOOK 15, PAGE 72
LND. 33-15	=	LAND SURVEY VOLUME 33, PAGE 15
LOT 19-12	=	LOT SURVEY VOLUME 19, PAGE 12
R.R. 8-29	=	ROAD RECORD VOLUME 8, PAGE 29
R/W	=	RIGHT OF WAY
C	=	CENTERLINE
AC.	=	ACRES
TWP.	=	TOWNSHIP
TR.	=	TRACT
IL	=	INLOT

LINE LEGEND	
	Blow-up Boundary
	Property Line
	Lot Split Line
	Section Line
	Centerline
	Right-of-Way Line
	Corporation Line
	Railroad Bed

SURVEY INDEX		
REC. 10-38	LOT 19-128	LND. 19-170
REC. 15-113		LND. 29-58
REC. 21-142		LND. 50-29
REC. 22-31		LND. 58-23
REC. 26-70		
REC. 18-32		
RD. REC. 8-123+		
RD. REC. 9-36		

ANNEXATION TO PIQUA
REC. 15-113

PARCEL NUMBER
N44-_____



PREPARED BY: MIAMI COUNTY ENGINEER'S MAP DEPARTMENT
PAUL P. HUELSKAMP, P.E., P.S., COUNTY ENGINEER

DATE: December 3, 2020 A PALMER

REVISED: October 20, 2022 APALMER