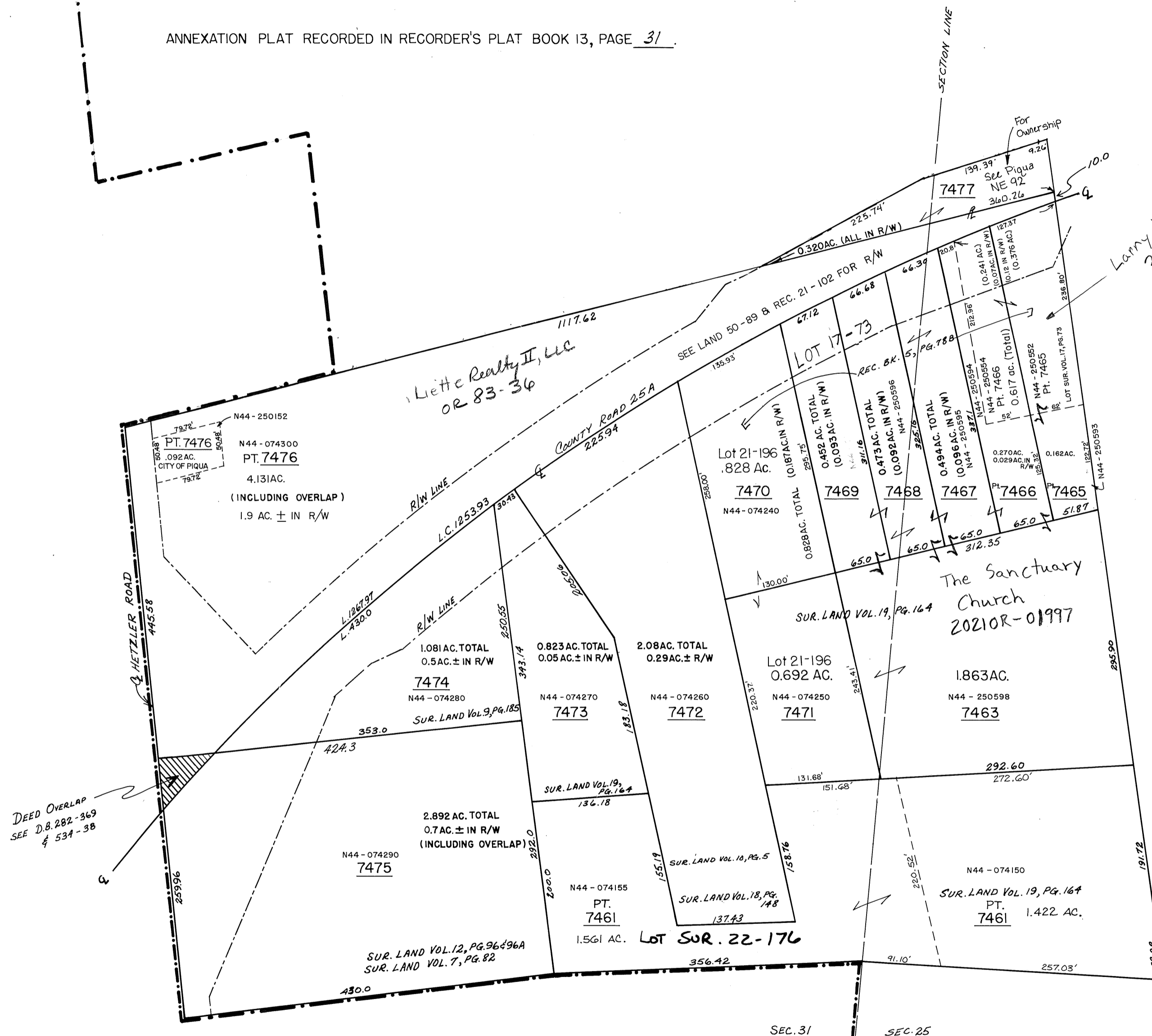


PIQUA N.E. PLAT 86

ANNEXATION PLAT RECORDED IN RECORDER'S PLAT BOOK 13, PAGE 31



Larry J. Hutton
20220A-0032A



LOT	NAME	D. B.	LOT	NAME	D. B.
7477	PAUL SHERRY	639-278	7469	The Sanctuary Church	20210R-01997
7476	LOT NOW SPLIT - SEE LOT ABOVE		7468	" "	" "
7475	Actionworks, LLC	20180R-11104	7467	" "	" "
7474			7466	PT. (0.270 AC.) PT. (0.241 AC.) JH Heating & Air, LLC	20210R- 16529
7473	ED. LIETTE REALTY IN	583-815	7465	PT. (0.376 AC.) PT. (0.182 AC.)	" "
7472			7463	The Sanctuary Church	20210R- 01997
7471	Brandon Schultz	740-324	7461	PT. (1.561 AC.) PT. (1.422 AC.) KU + KU Properties LLC	193-871 OR 211-536
7470	" "	" "			

----- DENOTES CORPORATION LINE
 ----- RIGHT OF WAY - HIGHWAY