

PARCEL NUMBER

N44 - - - - -

GREENE STREET

NOTE: ACCORDING TO ORIG. PLAT OF L. 3862 (REC. 1-144) & EARLY DEEDS THE FRONTAGE WOULD BE 43.5 FT. A PLAT LATER RECORDED (REC. 3-103) WHICH CLAIMS TO CORRECT DIMENSIONS, SHOWS FRONTAGE TO BE AS SHOWN

Rec. Bk. 1-Pg. 140

HARRISON STREET

RACE STREET

NEW STREET

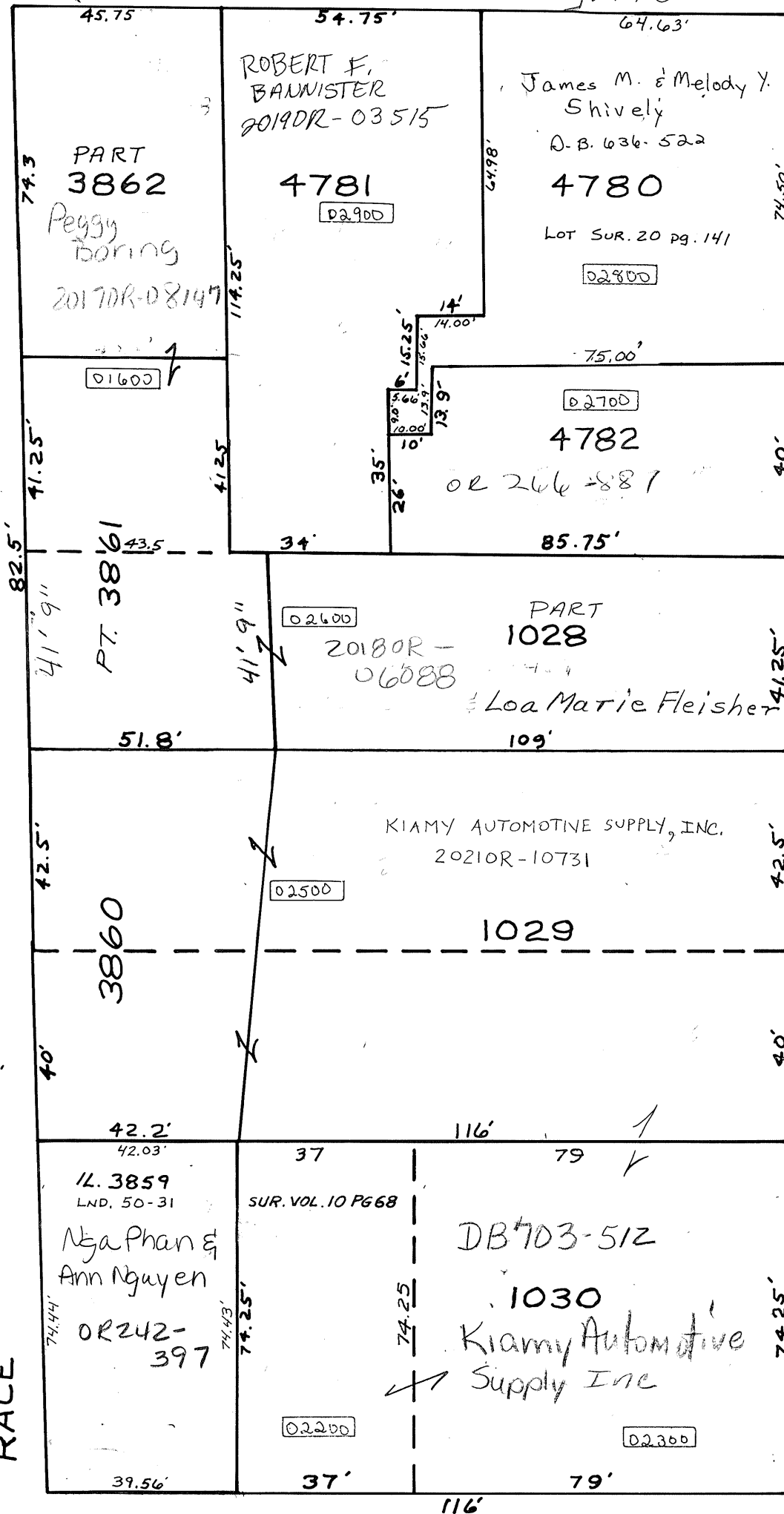
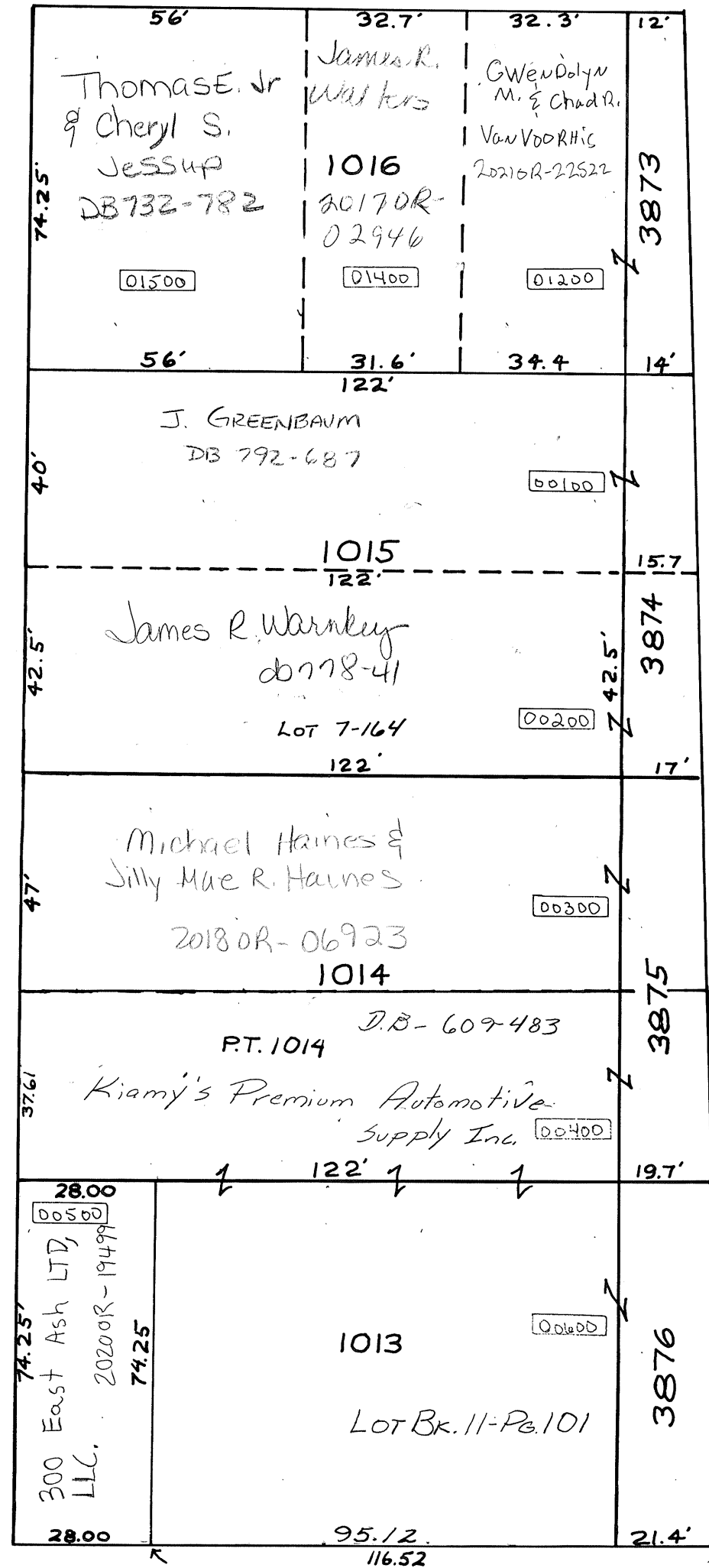
36'

20'

HARRISON STREET

RACE STREET

NEW STREET



ASH STREET

STREET

REC. 23-46