

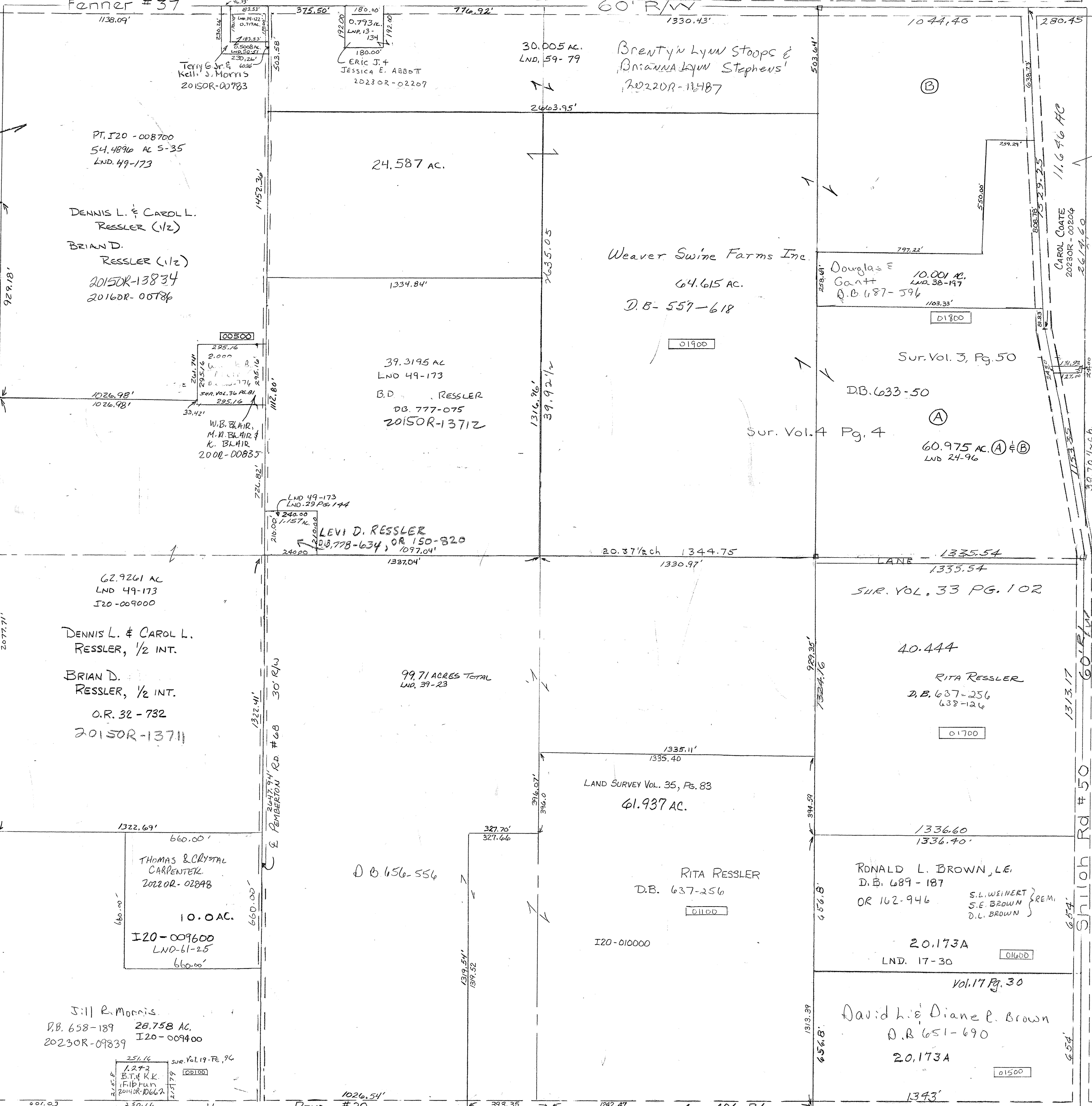
Fenner # 37

60' R/W

PARCEL NUMBER



Survey:  
Pg. 50 - E-Cen Pt NE  
Vol. 3  
Pg. 4 - NE QR  
Vol. 13  
Pg. 134 - N-Cen Pt NW  
Vol. 14  
Pg. 122 - N-Cen Pt NW  
Vol. 17  
Pg. 70 - S.E. 1/4 S.E.  
Pg. 15 - S.E. 1/4 S.E.  
1 SEC. 37



PT. I20 - 008700  
54.4896 AC S-35  
LND. 49-173

DENNIS L. & CAROL L.  
RESSLER (1/2)  
BRIAN D.  
RESSLER (1/2)  
2015OR-13834  
2016OR-00786

39.3195 AC  
LND 49-173  
B.D. RESSLER  
DB. 777-075  
2015OR-13712

62.9261 AC  
LND 49-173  
I20-009000  
DENNIS L. & CAROL L.  
RESSLER, 1/2 INT.  
BRIAN D.  
RESSLER, 1/2 INT.  
O.R. 32-732  
2015OR-13711

THOMAS & CRYSTAL  
CARPENTER  
2022OR-02848  
10.0 AC.  
I20-009600  
LND-61-25

Jill R. Morris  
D.B. 658-189 28.758 AC.  
I20-009400  
2023OR-09839

D.B. 656-556

LAND SURVEY Vol. 35, Pg. 83  
61.937 AC.

RITA RESSLER  
D.B. 637-256  
I20-010000

RONALD L. BROWN, L.E.  
D.B. 689-187  
OR 162-946  
S.L. WEINERT } REM.  
S.E. BROWN }  
D.L. BROWN }

20.173A  
LND. 17-30  
Vol. 17 Pg. 30  
David L. & Diane L. Brown  
D.B. 651-690  
20.173A

REVISED  
9/21/23 ADP

HORSESHOE BEND #38

SECTION 2 UNION