

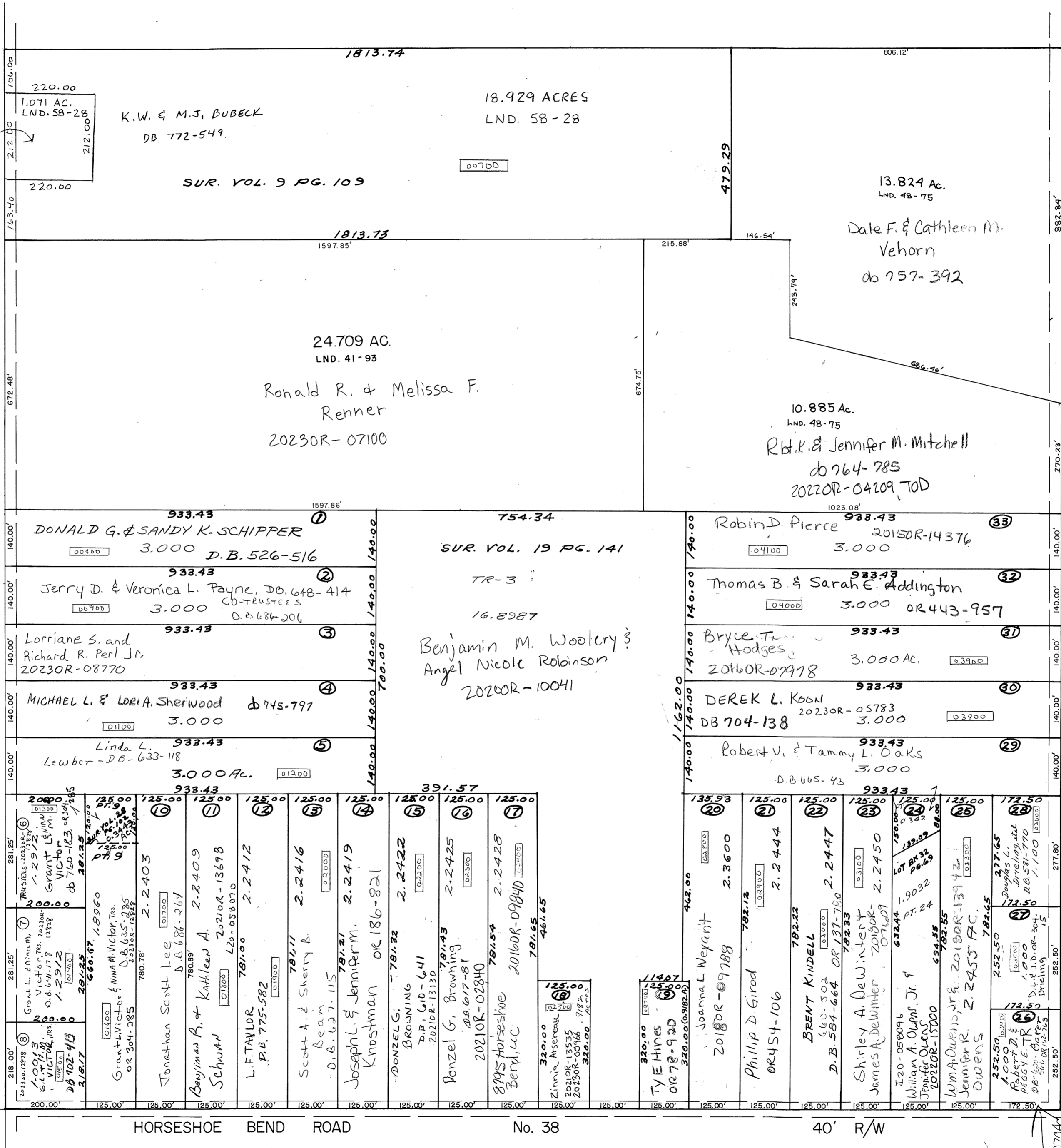
CHAR - MAR SUB., SECTION 1
LOTS 1 THRU 18
REC. BOOK 10, PAGE 122

RANGE LINE ROAD

No. 9

60' R/W

Russell J.
Renner
20220R-12740



(SEE COMMISSIONERS' JOURNAL 8, PAGE 437, FOR RIGHT-OF-WAY
WIDTH REVISED ACCORDING TO RESEARCH BY MIAMI COUNTY MAP
DEPARTMENT ON 2-27-2003.

CHAR - MAR SUB., SECTION 2
LOTS 19 THRU 33
REC. BOOK 10, PG. 123

20220R-0104