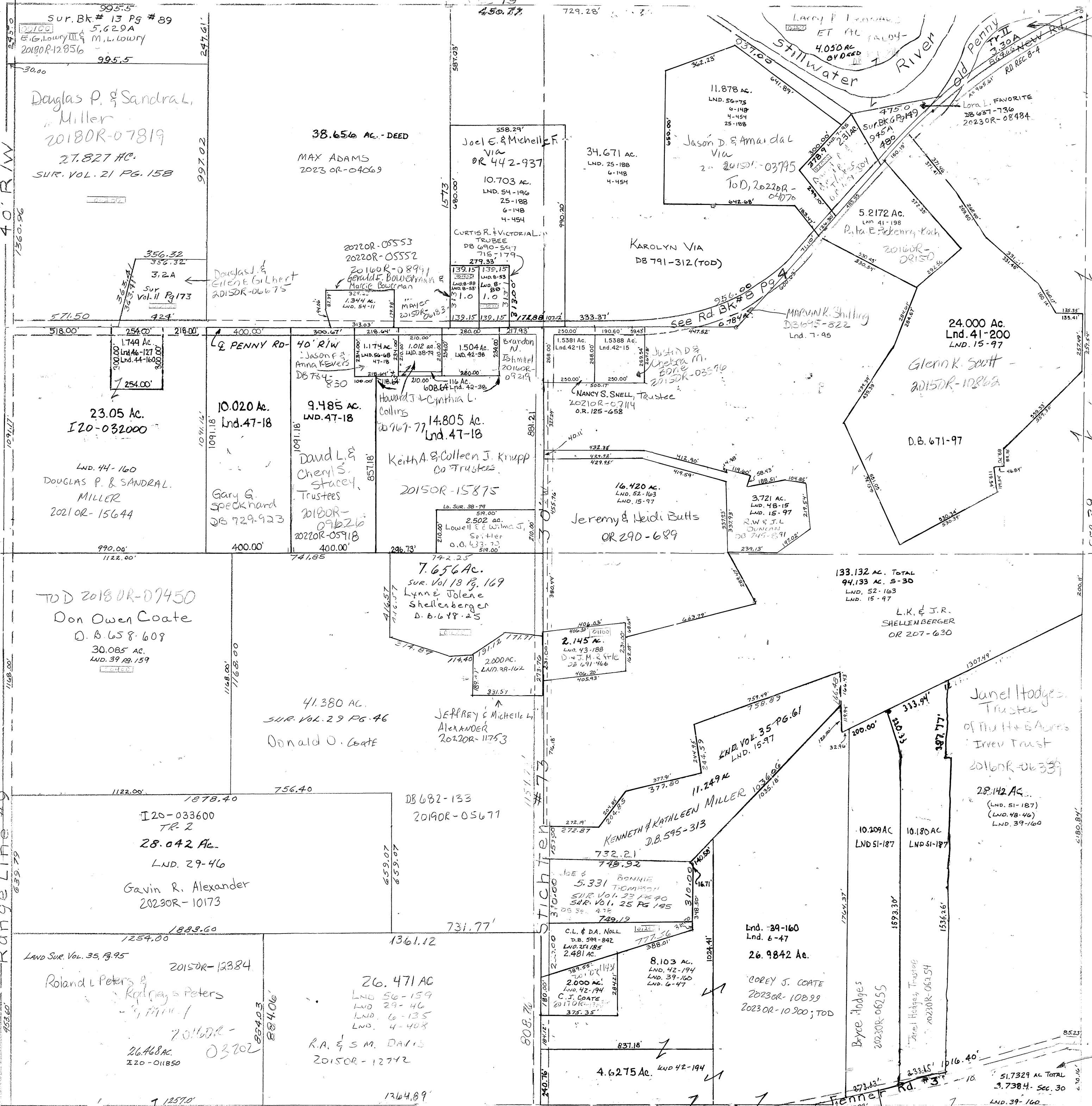
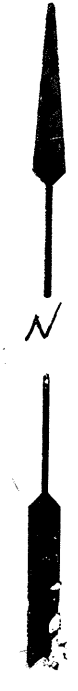


LAND 38-162  
Lnd. 46-127  
Lnd. 47-18  
Lnd. 48-15  
Lnd. 48-46  
Lnd. 54-196  
Lnd. 56-68  
Lnd. 56-75  
Vol. 8 Pg 53-E Cen Pt NW  
Vol. 8 Pg 58-E Cen Pt NW  
Vol. 8 Pg 64-Penny Rd  
Vol. 10 Pg 26-S Cen Pt SE  
Vol. 11 Pg 173-W Cen Pt NW  
Vol. 13 Pg 89-NW Cor NW  
Vol. 15 Pg 97-S Pt NE NW PASE  
Vol. 18 Pg 129 NE Cor SW Qtr  
Pg 47-SW PASE  
Pg 135-SE PASE  
Pg 145-Cen Pt NW 1/2  
Pg 149-Cen Pt NE  
Pg 95-Cen Pt NE  
Vol. 6 Pg 47-SW PASE  
Vol. 6 Pg 135-SE PASE  
Vol. 6 Pg 145-Cen Pt NW 1/2  
Vol. 6 Pg 149-Cen Pt NE  
Vol. 7 Pg 95-Cen Pt NE  
Vol. 3 Pg 134  
Vol. 3 Pg 135  
Vol. 3 Pg 145  
Vol. 4 Pg 149  
Vol. 4 Pg 454  
Vol. 3 Pg 397  
S.P. 1/2 Sec Line - Vol. 1 Pg 134  
NW Pt SW - Vol. 1 Pg 135  
W. Pt SE - Vol. 1 Pg 145  
SE Pt SW - Vol. 1 Pg 149  
Cen. Pt NW 1/2 - Vol. 1 Pg 454  
Cen. Pt NW Qtr - Vol. 1 Pg 397  
Lnd. 41-198 Cen. Pt NE Qtr.  
Lnd. 41-200 SE Pt NE Qtr.  
Lnd. 42-15 W. Cen. Pt NE Qtr.  
Lnd. 42-38 E. Cen. Pt NW Qtr.  
Lnd. 42-194 SW Cor. SE Qtr.  
Lnd. 44-160 SW Cor. NW Qtr.



PARCEL NUMBER  
120-1-1-1



REV: 10-3-23

OR 503-336  
Jack Eugene Coate  
2021 OR 18931

(LND. 10-26)