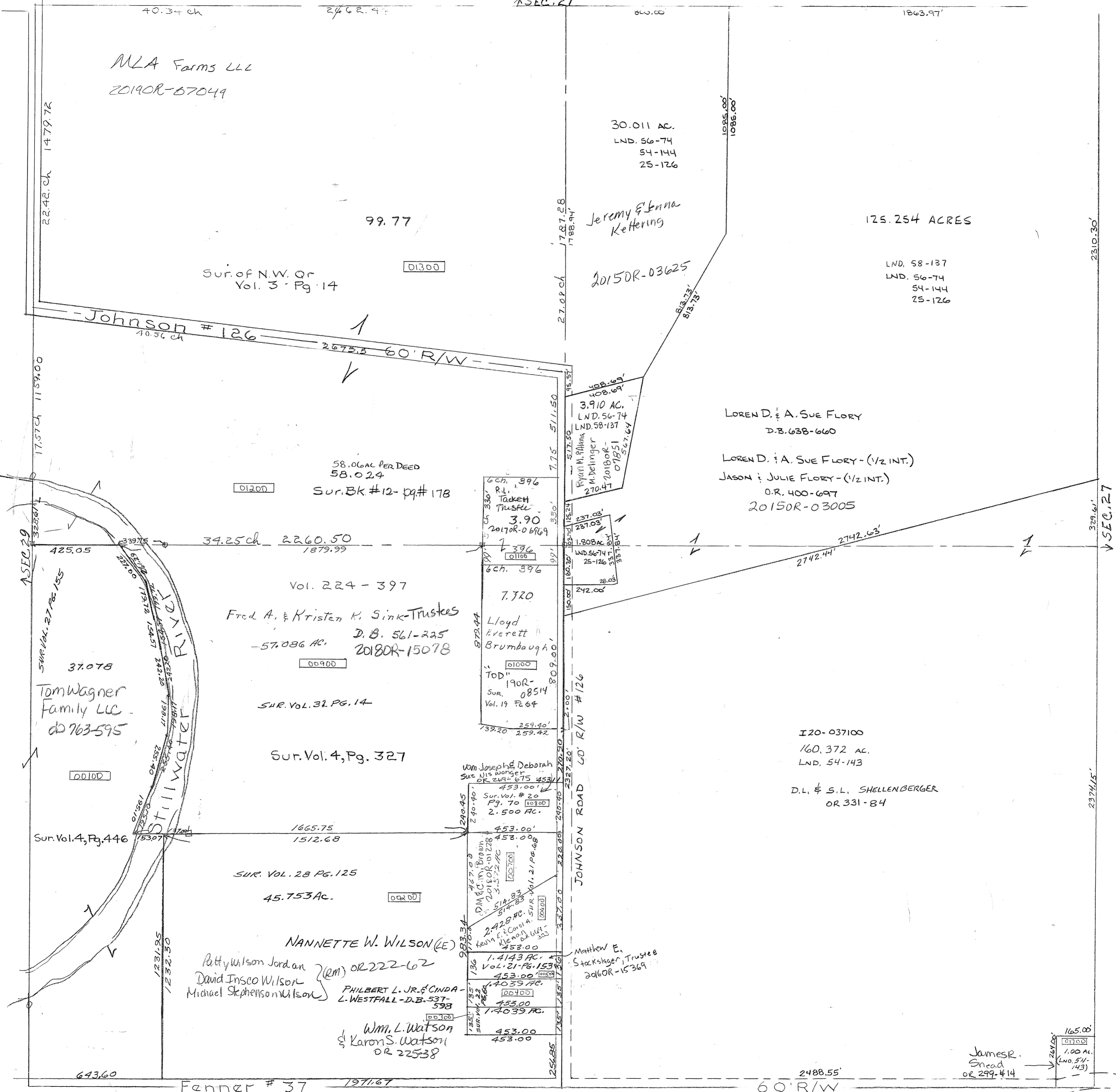


SMDA NUMBER
I30-NT033



SURVEYS
- N P4 MW
Pg. 14 - NE P4 SW
Pg. 327 - W P4 SW
Pg. 446 - W P4 SW
Pg. 178 - SE Cor NW
Pg. 178 - SE Cor NW
Vol. 12
Vol. 12
Vol. 12



MLA Farms LLC
2019OR-67049

30.011 AC.
LND. 56-74
54-144
25-126

Jeremy & Anna
Kettering

125.254 ACRES

LND. 58-137
LND. 56-74
54-144
25-126

Sur. of N.W. Qr
Vol. 3 - Pg. 14

Johnson # 126
60' R/W

LOREN D. & A. SUE FLORY
D.B. 638-660

LOREN D. & A. SUE FLORY - (1/2 INT.)

JASON & JULIE FLORY - (1/2 INT.)
O.R. 400-697
2015OR-03005

58.06 AC PER DEED
58.024
Sur. BK # 12 - pg. # 178

34.25 ch 2260.50
1879.99

Vol. 224 - 397
Fred A. & Kristen K. Sink - Trustees
- 57.086 AC.
D.B. 561-225
2018OR-15078

6 ch. 396
R.L. Tackett
Trustee
3.90
2017OR-06969
6 ch. 396
Lloyd Everett
Brumbaugh
TOD
190R-
Sur. 08514
Vol. 19 P. 64

37.078
Tom Wagner
Family LLC
d/b 763-595

Sur. Vol. 32 Pg. 14
Sur. Vol. 4, Pg. 327

I20-037100
160.372 AC.
LND. 54-143

D.L. & S.L. SHELLENBERGER
OR 331-84

Sur. Vol. 4, Pg. 446

SUR. VOL. 28 PG. 125
45.753 AC.

NANNETTE W. WILSON (E)
Patty Wilson Jordan (RM) OR 222-62
David Inseo Wilson
Michael Stephenson Wilson
PHILBERT L. JR. & CINDA
L. WESTFALL - D.B. 537-
598

Wm Joseph & Deborah
Sur. Vol. # 20
Pg. 70
2.500 AC.
453.00'
453.00'
453.00'
453.00'
453.00'
453.00'
453.00'
453.00'
453.00'

Matthew E.
Stacksager, Trustee
2016OR-15369

Wm. L. Watson
& Karon S. Watson
OR 22538

James R.
Snead
OR 299-414

REVISED: 6-11-2018 D65

REVISED: 3/17/15
AM