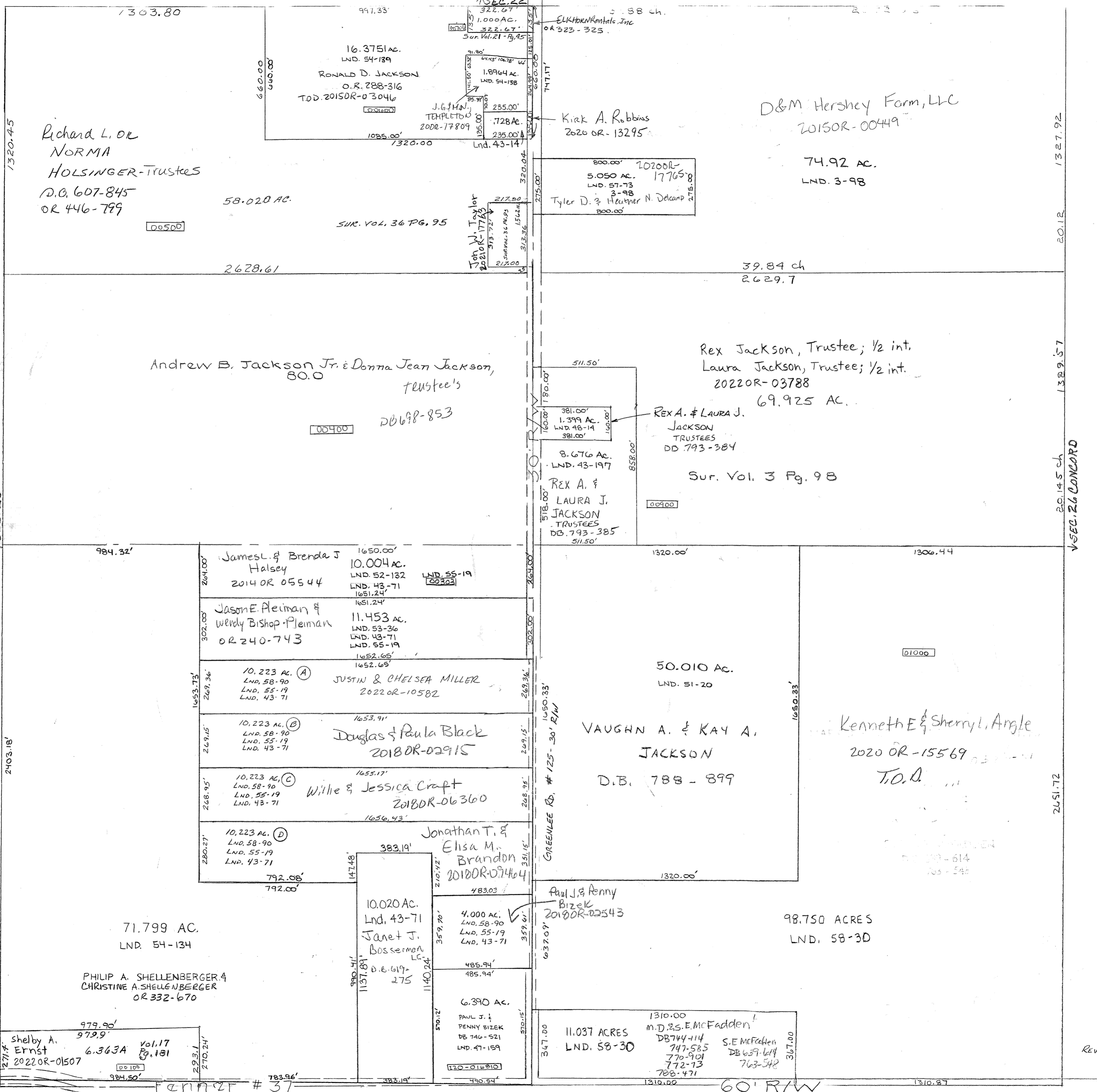


PARCEL NUMBER
120 - - - - -



SURVEYS -
Vol. 3 Pg 98 - NE QTR
Vol. 17 Pg 181 - S. M. QTR SW
Lnd. 43-14 NE Cor. NW QTR
Lnd. 43-71 E Pt. SW QTR
Lnd. 47-159 SE COR. SW QTR



Richard L. OR
NORMA
HOLSINGER-TRUSTEES
D.O. 607-845
OR 446-799

16.3751 AC.
LND. 54-139
RONALD D. JACKSON
O.R. 288-316
TOD. 2015OR-03046

00500

SUR. VOL. 36 PG. 95

Andrew B. Jackson Jr. & Donna Jean Jackson,
80.0
Trustees

00400

DB 698-853

984.32'

James L. & Brenda J
Halsey
2014 OR 05544

LND. 55-19
00300

Jason E. Fleiman &
Wendy Bishop-Fleiman
OR 240-743

10.223 AC. (A)
LND. 58-90
LND. 55-19
LND. 43-71

JUSTIN & CHELSEA MILLER
2022 OR-10582

10.223 AC. (B)
LND. 58-90
LND. 55-19
LND. 43-71

Douglas & Paula Black
2018 OR-02915

10.223 AC. (C)
LND. 58-90
LND. 55-19
LND. 43-71

Willie & Jessica Craft
2018 OR-06360

10.223 AC. (D)
LND. 58-90
LND. 55-19
LND. 43-71

Jonathan T. &
Elisa M.
Brandon
2018 OR-09464

71.799 AC.
LND. 54-134

PHILIP A. SHELLENBERGER &
CHRISTINE A. SHELLENBERGER
OR 332-670

shelby A.
Ernst
2022 OR-01507

00100

10.020 AC.
Lnd. 43-71
Janet J.
Bosserman
D.B. 619-275

4.000 AC.
LND. 58-90
LND. 55-19
LND. 43-71

485.94'
485.94'

6.390 AC.

PAUL J. &
PENNY BIZEK
DB 746-521
LND. 47-159

020-016810

SEC. 34

60' R/W

REVISED 7/13/22