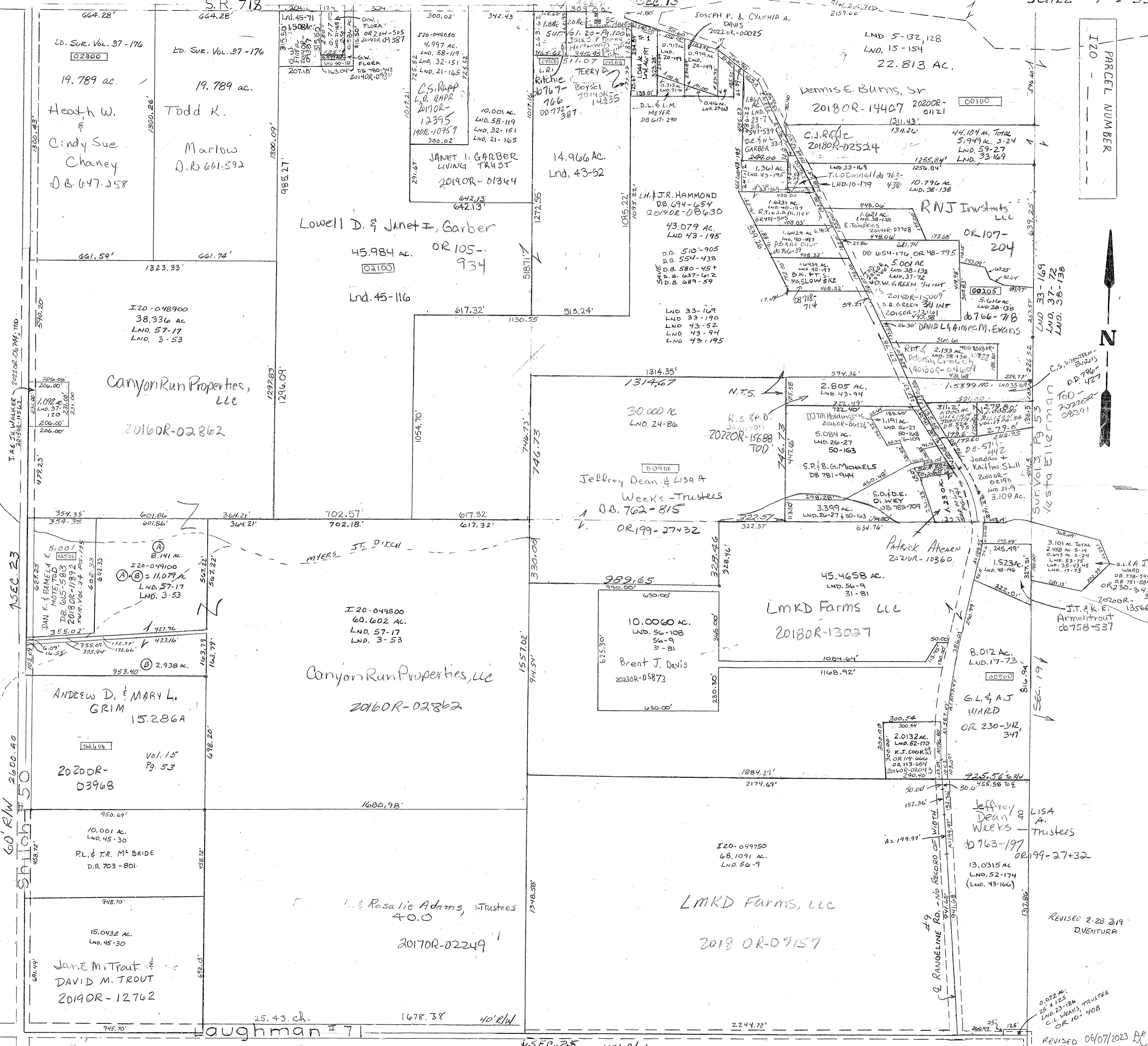


SURVEYS Vol 7 Pg 141-SEPT NE Lnd. 43-52 SE PT NW QTR. & SW PT. NE QTR. Lnd. 43-106 SE. Pt. SE. QTR. Vol. 10 " 179-CEN N PT NE Lnd. 45-71 NE Pt. NW QTR. Vol. 15 " 154-N.E. 6th N.E. Lnd. 45-116 SE Pt. NW QTR. Vol. 6 " 32-SE PT NE Lnd. 46-197 NW Pt. NE QTR. Vol. 3 Pg 106 Vol. 10 " 132-NE PT NE Vol. 15 " 128-NE PT NE Vol. 6 " 109-SE PT NE Vol. 7 " 32-SE PT NE



PARCEL NUMBER I20



REVISED 2-28-2019 DVENTURA

REVISED 06/07/2023 DE